



Park Lane Mayfair W1K

£3,495 Per Week - Available 07/01/2019



*A spacious modern two bedroom apartment. Lavishly tranquil, this apartment will feel like your relaxing retreat in the heart of London moments from Hyde park.*

Spacious Modern apartment | Moments from Hyde Park & Mayfair.

## Description

Contemporary, sophisticated yet homely brand new two bedroom apartment with stunning and exclusive views over Hyde Park, intelligently designed with the best intuitive technology. With the master bedroom nicely tucked away for a complete serene night sleep with the greatest comfort.

## Furnishing

Furnished



2nd bedroom



Kitchen

## Hamptons Knightsbridge Lettings

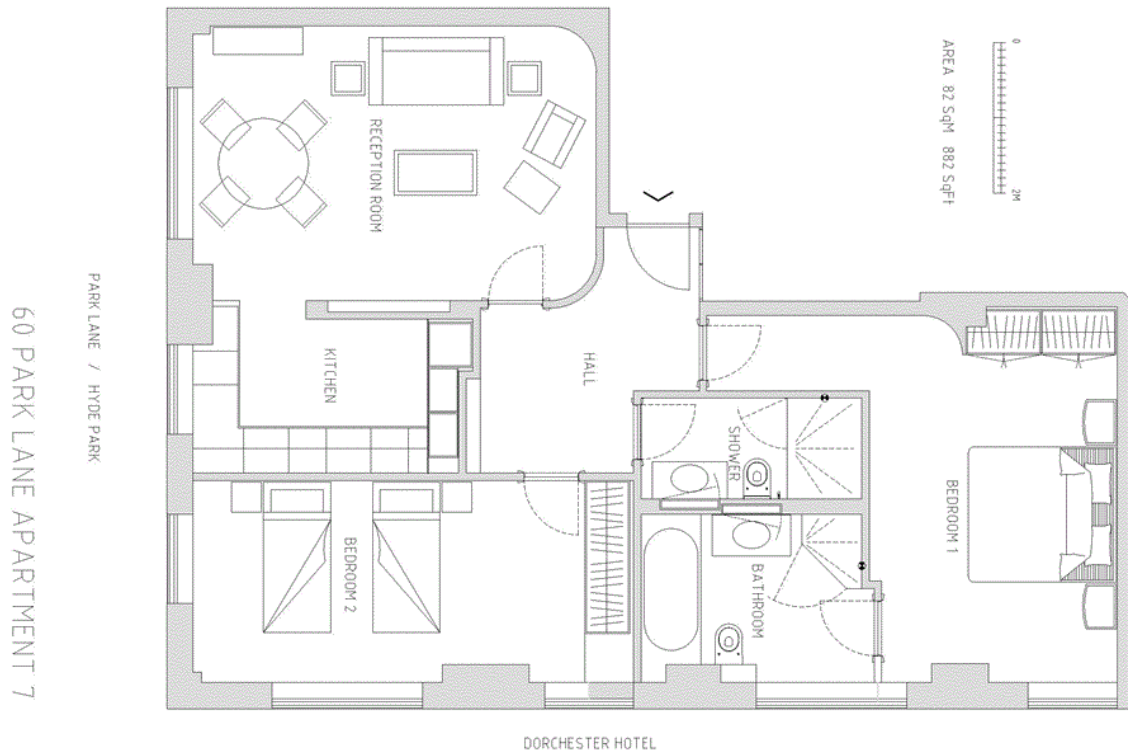
168 Brompton Road, Knightsbridge

London SW3 1HW

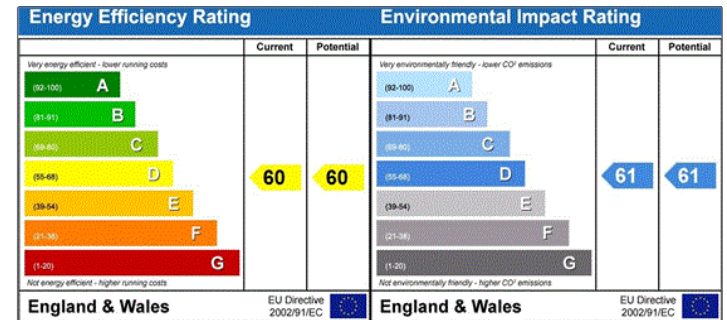
Tel: 020 7584 2014 - [KnightsbridgeLettings@hamptons-int.com](mailto:KnightsbridgeLettings@hamptons-int.com)

[www.hamptons.co.uk](http://www.hamptons.co.uk)

## Floorplan



## Energy Performance Certificate (EPC)



**For clarification,** we wish to inform prospective tenants that we have prepared these particulars as a general guide. We have not verified permissions, nor carried out a survey, tested the services, appliances and specific fittings. Room sizes are approximate and rounded: they are taken between internal wall surfaces and therefore include cupboards/shelves, etc. Accordingly, they should not be relied upon for carpets and furnishings. It should also be noted that all fixtures and fittings, carpeted, curtains/blinds, kitchen equipment and garden statuary, whether fitted or not, are deemed removable by the landlord unless specifically itemised with these particulars.

### Hamptons Knightsbridge Lettings

168 Brompton Road, Knightsbridge

London SW3 1HW

Tel: 020 7584 2014 - [KnightsbridgeLettings@hamptons-int.com](mailto:KnightsbridgeLettings@hamptons-int.com)

[www.hamptons.co.uk](http://www.hamptons.co.uk)

