



Bath Road Littlewick Green SL6

£8,000 Per Month - Available Now

HAMPTONS
INTERNATIONAL

Beyond your expectations

Bath Road Littlewick Green SL6

£8,000 Per Month - Available Now

HAMPTONS
INTERNATIONAL

Immaculately presented five bedroom executive property in Littlewick Green

Large gated driveway | Summer House | hot tub | 2.5 acres | Underfloor heating.

Description

Situated on a private road in a desirable location, this five bedroom detached property has been extensively refurbished to a high standard throughout. The property itself stands in grounds of approximately 2.5 acres and is ideal for modern family living. Comprising of large entrance hall, dining room, sitting room, study, cloakroom, open plan kitchen/breakfast room, conservatory, family room and utility room on the ground floor. On the first floor are four large double bedrooms all with en-suite bathrooms, the master bedroom has a balcony overlooking the garden, large dressing room and newly fitted en-suite bathroom. To the exterior of the property there is a triple garage, a gated driveway with parking for up to 15 cars, a large summer house, hot tub and sunken trampoline.

Furnishing

Unfurnished



Hamptons Maidenhead Lettings

11-13 Queen Street

Maidenhead SL6 1NB

Tel: 01628 675881 - maidenheadlettings@hamptons-int.com

www.hamptons.co.uk

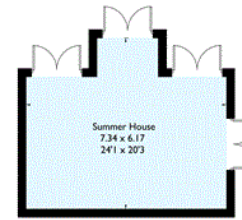
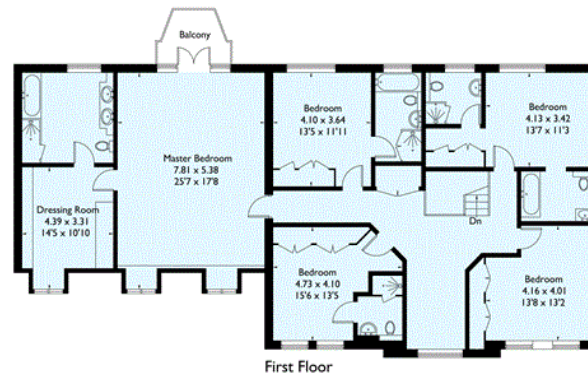
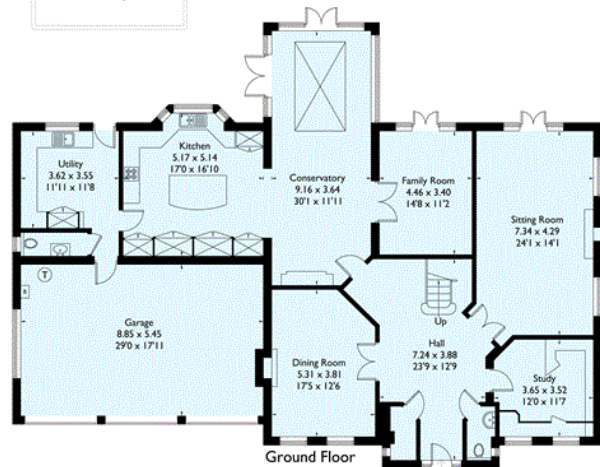
Floorplan

Bath Road, Littlewick Green, Maidenhead

Approximate Gross Internal Area = 424.0 sq m / 4564 sq ft
Garage = 38.0 sq m / 409 sq ft
Total = 462.0 sq m / 4973 sq ft

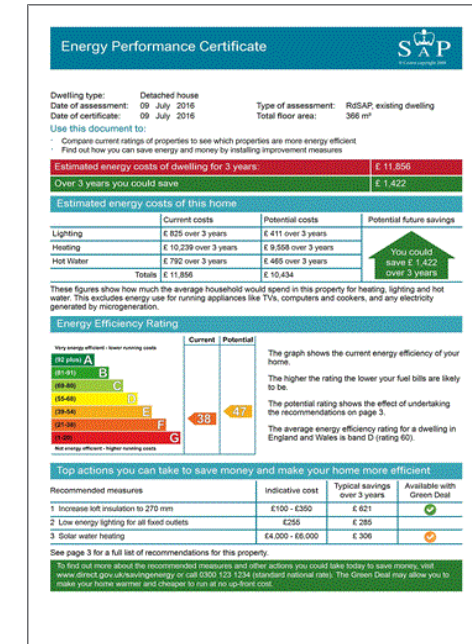


Floorplans © 2016
0945 634080 Ref: 170451
This plan is for layout guidance only.
Drawn in accordance with
RICS guidelines. Not drawn to
scale, unless stated. Windows &
door openings are approximate.
While every care is taken in the
preparation of this plan, please check
all dimensions, shapes & compass
bearings before making any
decisions reliant upon them.



(Not Shown In Actual
Location / Orientation)

Energy Performance Certificate (EPC)



For clarification, we wish to inform prospective purchasers that we have prepared these sales particulars as a general guide. We have not verified permissions, nor carried out a survey, tested the services, appliances and specific fittings. Room sizes are approximate and rounded: they are taken between internal wall surfaces and therefore include cupboards/shelves, etc. Accordingly, they should not be relied upon for carpets and furnishings. It should also be noted that all fixtures and fittings, carpeted, curtains/blinds, kitchen equipment and garden statuary, whether fitted or not, are deemed removable by the vendor unless specifically itemised with these particulars.

Hamptons Maidenhead Lettings

11-13 Queen Street

Maidenhead SL6 1NB

Tel: 01628 675881 - maidenheadlettings@hamptons-int.com

www.hamptons.co.uk

HAMPTONS
INTERNATIONAL

Beyond your expectations