



Kingsquarter Maidenhead SL6

£1,230 Per Month - Available Now

HAMPTONS
INTERNATIONAL

Beyond your expectations

A spacious first floor apartment set within this well established development within walking distance of Maidenhead town centre.

Walking distance of the town centre | Lift | Underground Parking | Newly decorated | Professional Cleaner Inclusive.

Description

Spacious executive apartment offering open plan lounge/kitchen with dining room area. Well placed accommodation throughout to include 2 double bedrooms master with en suite shower, family bathroom. The property further benefits from a professional cleaner inclusive to the rental amount charged. Underground parking and permit parking, communal gardens.

Situation

Within walking distance of Maidenhead town centre, train station and local amenities, easy commute of the M4/M25 motorway network.

Furnishing

Unfurnished



Burghley Court fpz175304 (11)



Burghley Court fpz175304 (7)

Hamptons Maidenhead Lettings

11-13 Queen Street

Maidenhead SL6 1NB

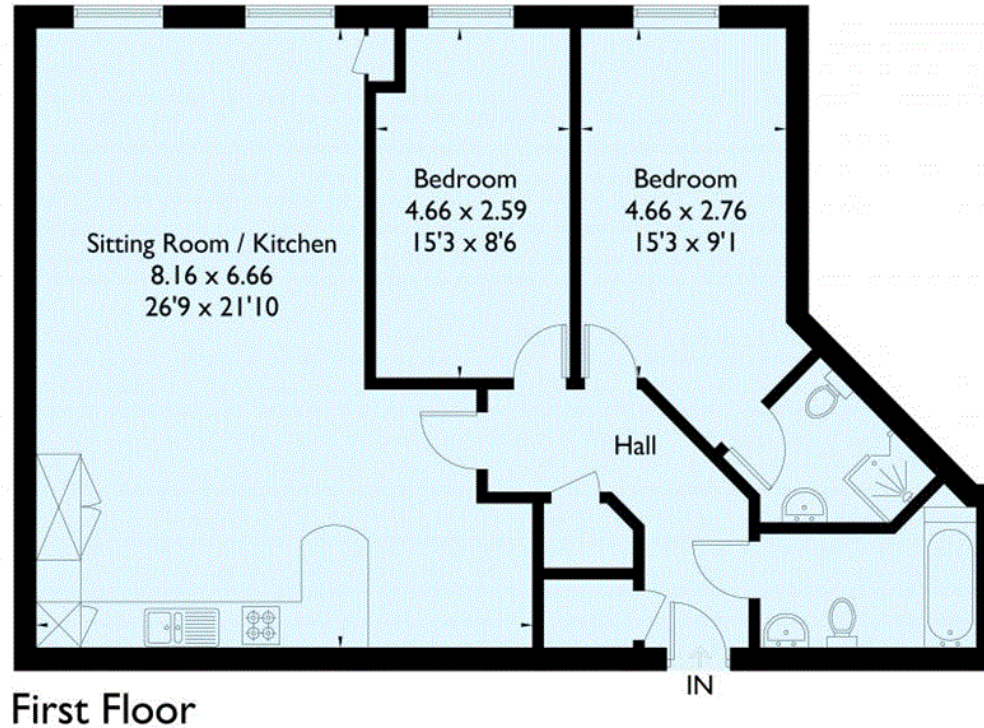
Tel: 01628 675881 - maidenheadlettings@hamptons-int.com

www.hamptons.co.uk

Floorplan

Burgnley Court, Kingsquarter, Maidenhead

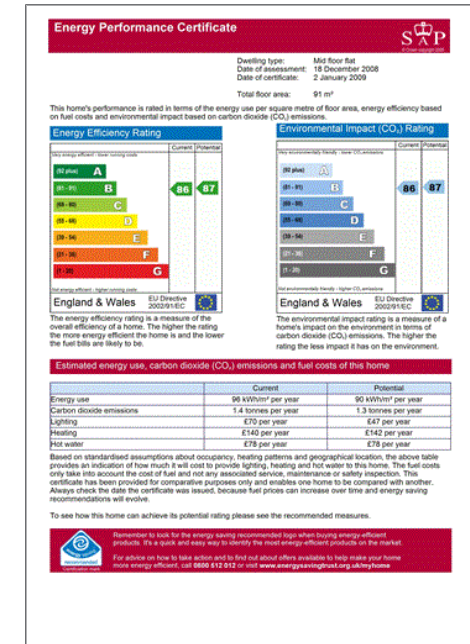
Approximate Gross Internal Area
89.5 sq m / 963 sq ft



FLOORPLANZ © 2016 0845 6344080 Ref: 175304

This plan is for layout guidance only. Drawn in accordance with RICS guidelines. Not drawn to scale unless stated. Windows & door openings are approximate. Whilst every care is taken in the preparation of this plan, please check all dimensions, shapes & compass bearings before making any decisions reliant upon them.

Energy Performance Certificate (EPC)



Hamptons Maidenhead Lettings

11-13 Queen Street

Maidenhead SL6 1NB

Tel: 01628 675881 - maidenheadlettings@hamptons-int.com

www.hamptons.co.uk

HAMPTONS
INTERNATIONAL

Beyond your expectations