



St. Johns Wood High Street London NW8

£1,450 Per Week - Available 17/03/2017

HAMPTONS
INTERNATIONAL

Beyond your expectations

A spacious top floor four bedroom apartment in this desirable building at the end of St John's Wood High Street close to both Regent's Park and the underground station.

4 Bedrooms | Excellent Location.

Description

A spacious top floor four bedroom apartment in this desirable building. The apartment has a spacious double reception room with wooden floor which provides a wonderful entertaining space. There is a fitted kitchen with separate washer and dryer and an American style fridge freezer. There are four double bedrooms (two en suite) and a further family bathroom with plenty of storage options throughout.

Situation

Hanover House is well located at the end of St John's Wood High Street with its many shops, restaurants and boutiques. The green open spaces of Regent's Park are across Prince Albert Road. St John's Wood underground station (Jubilee Line) is reached within 0.3 miles.

Furnishing

Unfurnished



Kitchen



Reception Room

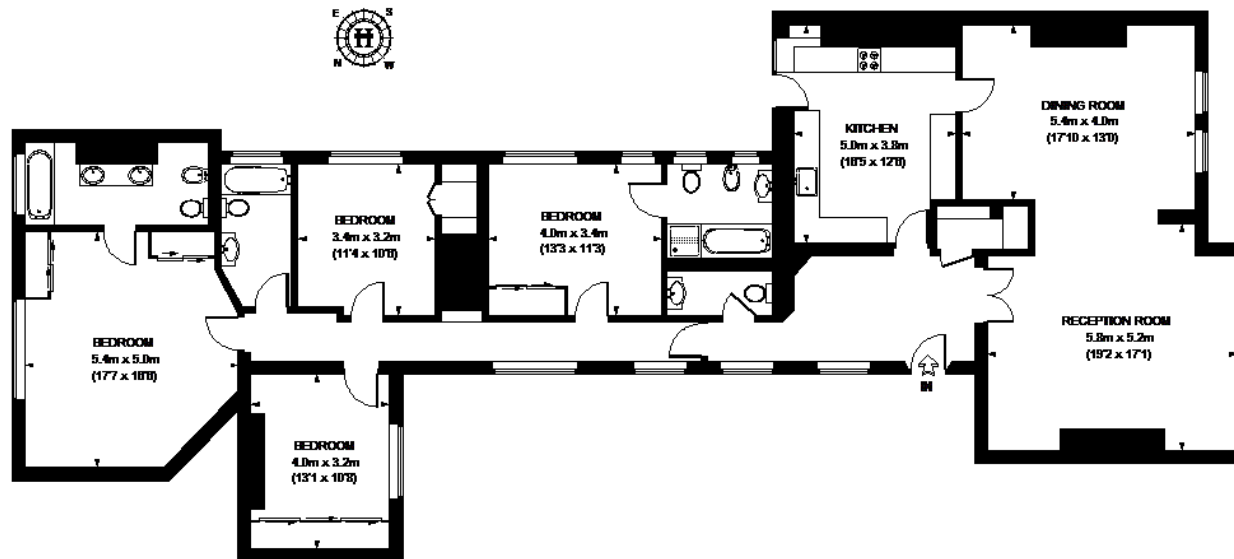
Hamptons St Johns Wood Lettings

99 St Johns Wood Terrace, St Johns Wood
London NW8 6PL

Tel: 020 7722 2131 - stjohnswoodlettings@hamptons-int.com

www.hamptons.co.uk

HANOVER HOUSE

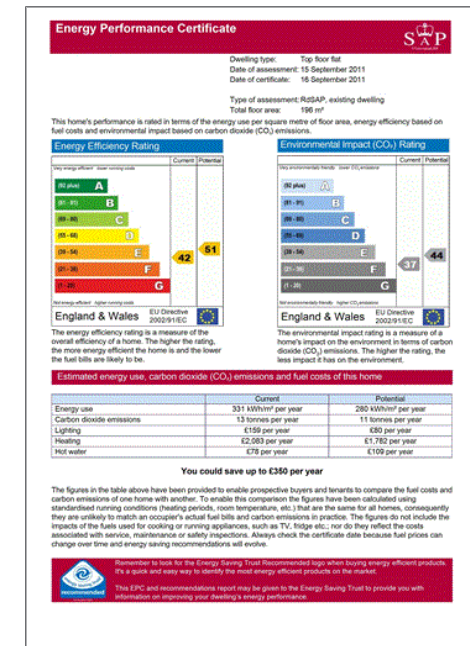


FIFTH FLOOR

APPROXIMATE GROSS INTERNAL AREA
2088 SQ. FT. (194 SQ. M.)

This plan is for layout guidance only. Not drawn to scale unless stated. Windows & door openings are approximate. Whilst every care is taken in the preparation of this plan, please check all dimensions, shapes & compass bearings before making any decisions reliant upon them. Please be advised that Hamptons International / our agents have not seen or reviewed any building regulations or planning permission in relation to works carried out to the property. (ID114622)

For clarification, we wish to inform prospective purchasers that we have prepared these sales particulars as a general guide. We have not verified permissions, nor carried out a survey, tested the services, appliances and specific fittings. Room sizes are approximate and rounded: they are taken between internal wall surfaces and therefore include cupboards/shelves, etc. Accordingly, they should not be relied upon for carpets and furnishings. It should also be noted that all fixtures and fittings, carpeted, curtains/blinds, kitchen equipment and garden statuary, whether fitted or not, are deemed removable by the vendor unless specifically itemised with these particulars.



Hamptons St Johns Wood Lettings

99 St Johns Wood Terrace, St Johns Wood

London NW8 6PL

Tel: 020 7722 2131 - stjohnswoodlettings@hamptons-int.com

www.hamptons.co.uk

HAMPTONS
INTERNATIONAL

Beyond your expectations