



Station Road, Beaconsfield, HP9

£1,495 Per Month - Available Now

HAMPTONS
INTERNATIONAL

Beyond your expectations

A lovely contemporary ground floor apartment with parking and a private patio, also benefiting from easy access to the town and Beaconsfield train station. EPC : B.

2 Bedrooms | 2 Bathrooms | Gardens | Off Street Parking | Unfurnished.

Description

**** AUTUMN SPECIAL - NO TENANCY**

AGREEMENT FEE ** A well presented contemporary ground floor apartment having recently been redecorated, offering easy access to the old and new towns of Beaconsfield, and the train station with a fast train into London via the Chiltern Line in under 25 minutes. The property offers two patio gardens, an open-plan kitchen/living space, two double bedrooms, two bathrooms, and private parking for one car. EPC : B.

Furnishing

Unfurnished



Rear patio



Kitchen area

Hamptons Beaconsfield Lettings

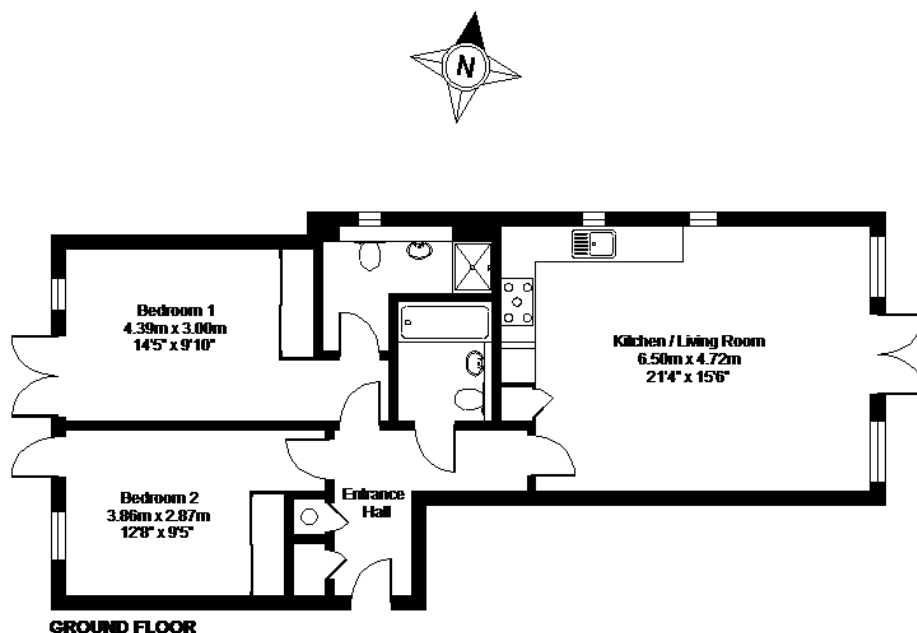
10 Burkes Parade

Beaconsfield HP9 1NN

Tel: 01494 671511 - beaconsfieldlettings@hamptons-int.com

www.hamptons.co.uk

Floorplan



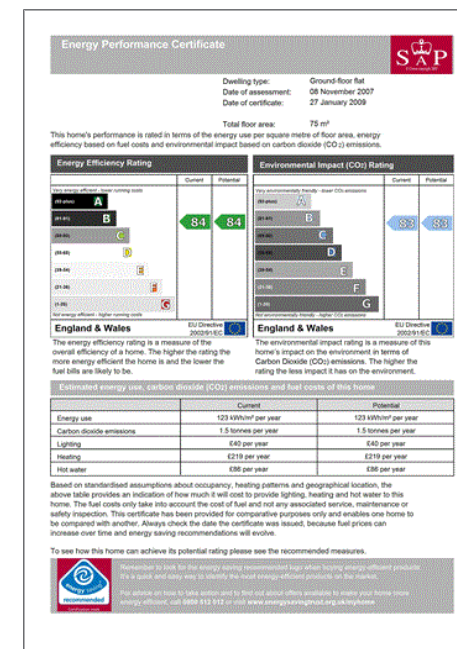
Station Road, Beaconsfield, Buckinghamshire, HP9

APPROX. GROSS INTERNAL FLOOR AREA 885 SQ FT 74.7 SQ METRES

Whilst every attempt has been made to ensure the accuracy of the floor plan contained here, measurements of doors, windows and rooms are approximate and no responsibility is taken for any error, omission or misstatement. These plans are for representation purposes only as defined by RICS Code of Measuring Practice and should be used as such by any prospective purchaser. Specifically no guarantee is given on the total square footage of the property if quoted on this plan. Any figure given ~~in this plan~~ should not be relied on as a basis of valuation.

Copyright nichecom.co.uk 2012 Produced for Hamptons REF : 296002

Energy Performance Certificate (EPC)



Hamptons Beaconsfield Lettings

10 Burkes Parade

Beaconsfield HP9 1NN

Tel: 01494 671511 - beaconsfieldlettings@hamptons-int.com

www.hamptons.co.uk

HAMPTONS
INTERNATIONAL

Beyond your expectations