



Featherbed Lane, Holmer Green HP15

£2,100 Per Month - Available Now

**HAMPTONS**  
INTERNATIONAL

*Beyond your expectations*

# Featherbed Lane, Holmer Green HP15

£2,100 Per Month - Available Now

**HAMPTONS**  
INTERNATIONAL

**\*\*\*SUMMER SPECIAL, NO TENANCY AGREEMENT FEES\*\*\*** *This beautifully refurbished home located in the popular village of Holmer Green, offers 3/4 bedrooms and open plan kitchen/living area with bi-fold doors on to the garden.* **\*\*\*SUMMER SPECIAL, NO TENANCY AGREEMENT FEES\*\*\***  
3 Bedrooms | 3 Bathrooms | 2 Receptions | Kitchen with Breakfast bar | Utility | Gated | Gardens.

## Description

This beautifully refurbished home located in the popular village of Holmer Green, offers 3/4 bedrooms and open plan kitchen/dining/living area with bi-fold doors on to the garden. It offer flexible accommodation with the option of a fourth bedroom downstairs with en suite shower room, ideal for guests.

## Furnishing

Unfurnished



Kitchen/dining area



Living area

## Hamptons Beaconsfield Lettings

10 Burkes Parade

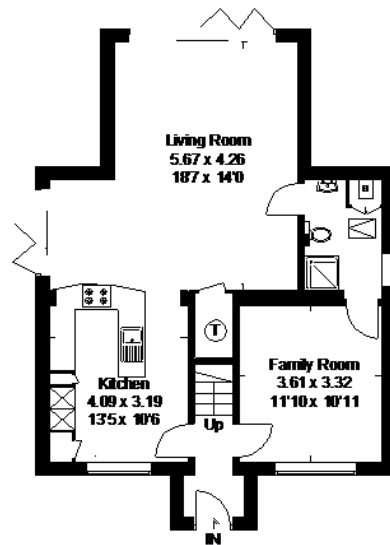
Beaconsfield HP9 1NN

Tel: 01494 671511 - [beaconsfieldlettings@hamptons-int.com](mailto:beaconsfieldlettings@hamptons-int.com)

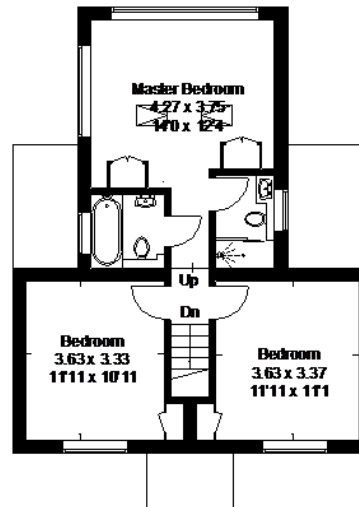
[www.hamptons.co.uk](http://www.hamptons.co.uk)

## Featherbed Lane, Holmer Green

Approximate Gross Internal Area = 119 sq m / 1281 sq ft



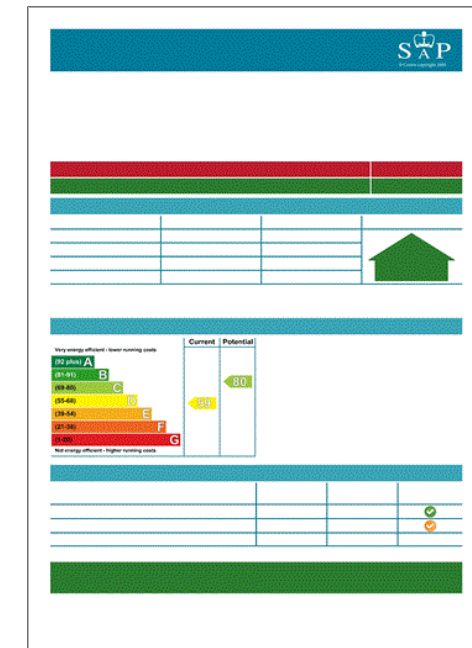
Ground Floor



First Floor

FLOORPLANZ © 2014 0845 6344080 Ref: 129796

This plan is for layout guidance only. Drawn in accordance with RICS guidelines. Not drawn to scale unless stated. Windows & door openings are approximate. Whilst every care is taken in the preparation of this plan, please check all dimensions, shapes & compass bearings before making any decisions reliant upon them.



**For clarification,** we wish to inform prospective purchasers that we have prepared these sales particulars as a general guide. We have not verified permissions, nor carried out a survey, tested the services, appliances and specific fittings. Room sizes are approximate and rounded: they are taken between internal wall surfaces and therefore include cupboards/shelves, etc. Accordingly, they should not be relied upon for carpets and furnishings. It should also be noted that all fixtures and fittings, carpeted, curtains/blinds, kitchen equipment and garden statuary, whether fitted or not, are deemed removable by the vendor unless specifically itemised with these particulars.

## Hamptons Beaconsfield Lettings

10 Burkes Parade

Beaconsfield HP9 1NN

Tel: 01494 671511 - beaconsfieldlettings@hamptons-int.com

[www.hamptons.co.uk](http://www.hamptons.co.uk)
**HAMPTONS**  
INTERNATIONAL

Beyond your expectations