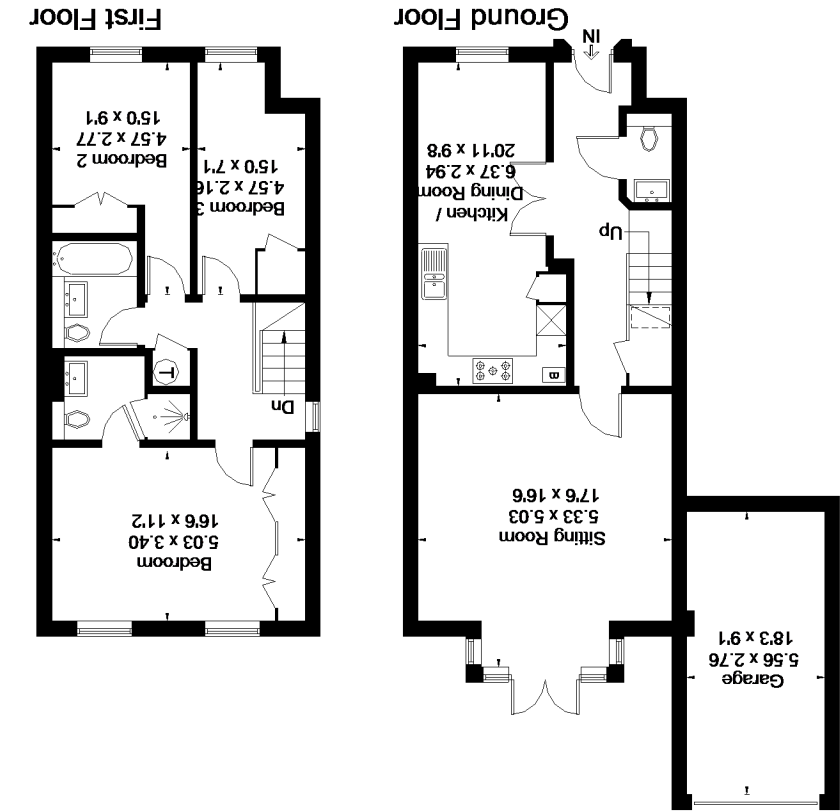


For clarification, we wish to inform prospective purchasers that we have prepared these sales particulars as a general guide. We have not verified permissions, nor carried out a survey, tested the services, appliances and specific fittings. Room sizes are approximate and rounded; they are taken between internal wall surfaces and therefore include cupboards/shelves, etc. Accordingly, they should not be relied upon for carpets and furnishings. It should also be noted that all fixtures and fittings, carpeted, curtains/blinds, kitchen equipment and garden stuary, whether fitted or not, are deemed removable by the vendor unless specifically itemised with these particulars.

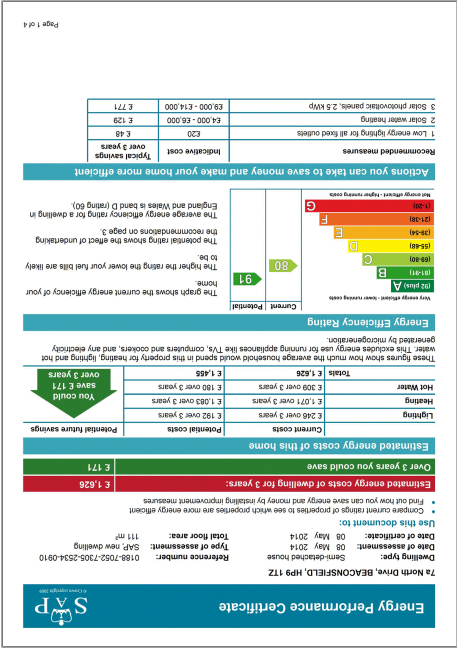


North Drive, Beaconsfield
Approximate Gross Internal Area = 111.6 sq m / 1201 sq ft
Garage = 15.2 sq m / 164 sq ft
Total = 126.8 sq m / 1365 sq ft



Floorplan

Energy Performance Certificate (EPC)



North Drive, Beaconsfield, HP9

£1,950 Per Month - Available 08/01/2018



North Drive



Master Bedroom



Bedroom Two



Bathroom



Garden



Rear Elevation

www.hamptons.co.uk

North Drive, Beaconsfield, HP9

£1,950 Per Month - Available 08/01/2018

HAMPTONS
INTERNATIONAL

**** AVAILABLE EARLY JANUARY 2018 **** A smart contemporary three bedroom house of generous proportions in an excellent location for easy access to the motorway network. EPC: C
Three bedrooms | Two bathrooms | Reception room | Kitchen/breakfast room | Rear garden | 2 off street parking spaces | Garage.

Description

**** AVAILABLE JANUARY 2018 **** This smart contemporary three bedroom house of generous proportions in an excellent location with easy access to the motorway network, via the M40 and M25. Further benefits include a private rear garden, two off street parking spaces and a garage. According to Bucks County Council website, the nearest junior school is Holtspur school currently with a "Good" Ofsted Rating, and Beaconsfield High School is also in the catchment currently rated as an "Outstanding" school according to Ofsted. Admission criteria is detailed on the Bucks County Council website and subject to individual circumstances. EPC: C.

Furnishing

Unfurnished



Kitchen/Breakfast room



7a North Drive 139332 Ph 13

Hamptons Beaconsfield Lettings

10 Burkes Parade

Beaconsfield HP9 1NN

Tel: 01494 671511 - beaconsfieldlettings@hamptons-int.com

www.hamptons.co.uk