



Wentworth, Surrey, GU25

£11,500 Per Month - Available 01/09/2017

HAMPTONS
INTERNATIONAL

Beyond your expectations

A substantial family house set in 4 acres of beautifully landscaped grounds which include a tennis court and swimming pool.

6 Bedrooms | 5 Bathrooms | 5 Reception Rooms | Kitchen/Breakfast Room | Garden | Garage | Outdoor Swimming Pool | Tennis Court | Private Estate.

Description

A substantial family house set in four acres of beautifully landscaped ground, which include a tennis court and swimming pool. Offering flexible living accommodation situated within the main island of the world famous Wentworth Estate.

Airport. Excellent sporting and leisure facilities can be found in the area including many well known local golf courses including Wentworth, Sunningdale and The Royal Berkshire, with polo at Smith's Lawn, racing at Ascot and Windsor, horse riding and walking in Windsor Great Park.

Situation

Virginia Water offers a good variety of day to day facilities with Windsor, Ascot and Staines providing a more extensive range of shopping, recreational and business activities. The area is renowned for its good public, prep and pre-prep schools. Rail connections to London (Waterloo) are available at Egham, Staines and Virginia Water, Datchet and Windsor and access to the M25 is available via Junction 13, which in turn provides access to the M3, M4 and Heathrow

Furnishing

Unfurnished



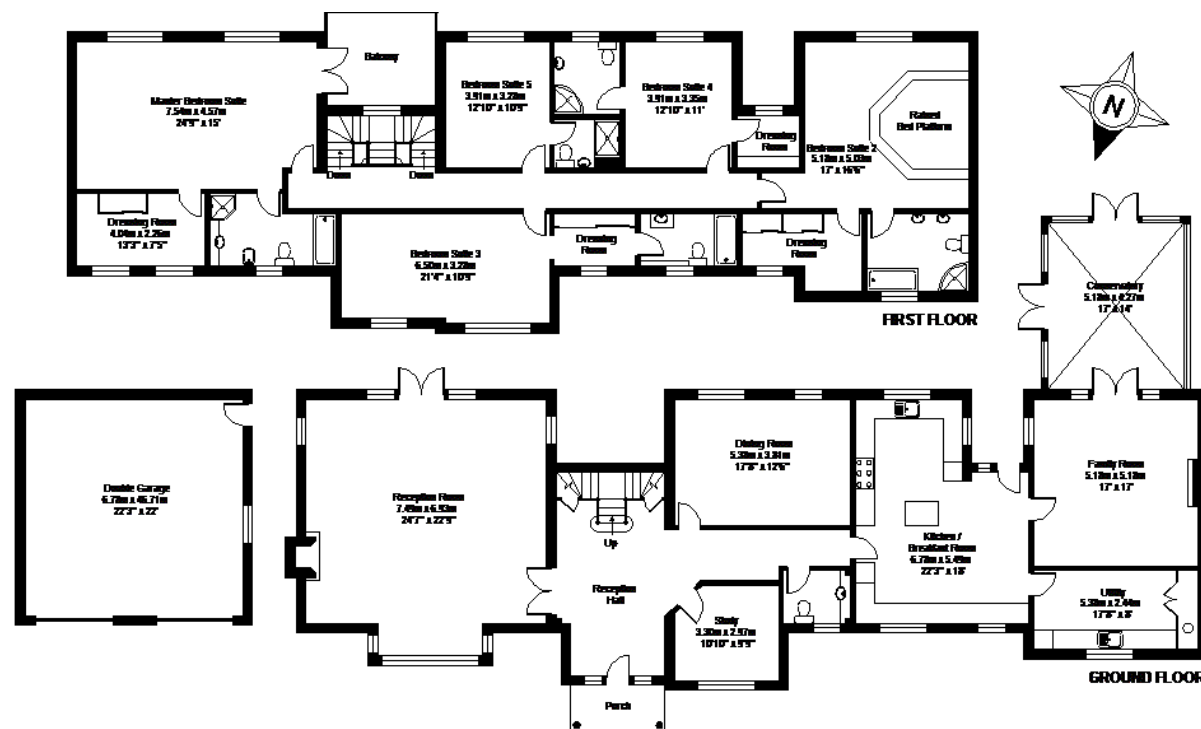
Hamptons Sunningdale Lettings

6 Broomhall Buildings

Sunningdale SL5 0DU

Tel: 01344 873081 - sunningdalelettings@hamptons-int.com

www.hamptons.co.uk

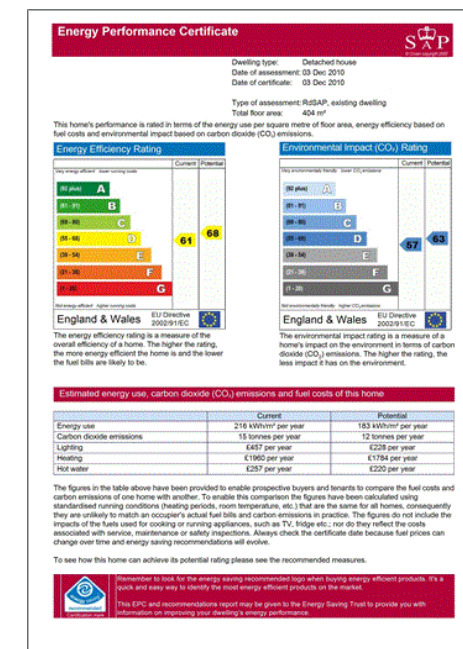


Wentworth Drive, Virginia Water, Surrey, GU25

APPROX. GROSS INTERNAL FLOOR AREA 4981 SQ FT 462.7 SQ METRES (INCLUDES DETACHED GARAGE)

Whilst every attempt has been made to ensure the accuracy of the floor plan contained here, measurements of doors, windows and rooms are approximate and no responsibility is taken for any error, omission or misstatement. These plans are for representation purposes only as defined by RICS Code of Measuring Practice and should be used as such by any prospective purchaser. Specifically no guarantee is given on the total square footage of the property if quoted on this plan. Any figure given is for information only and should not be relied on as a basis of valuation.

Copyright nichecom.co.uk 2013 Produced for Hamptons Country Lettings REF: 444426



For clarification, we wish to inform prospective purchasers that we have prepared these sales particulars as a general guide. We have not verified permissions, nor carried out a survey, tested the services, appliances and specific fittings. Room sizes are approximate and rounded: they are taken between internal wall surfaces and therefore include cupboards/shelves, etc. Accordingly, they should not be relied upon for carpets and furnishings. It should also be noted that all fixtures and fittings, carpeted, curtains/blinds, kitchen equipment and garden statuary, whether fitted or not, are deemed removable by the vendor unless specifically itemised with these particulars.

Hamptons Sunningdale Lettings

6 Broomhall Buildings

Sunningdale SL5 0DU

Tel: 01344 873081 - sunningdalelettings@hamptons-int.com

www.hamptons.co.uk

HAMPTONS
INTERNATIONAL

Beyond your expectations