



High View Road Lightwater GU18

£6,499 Per Month - Available Now

HAMPTONS
INTERNATIONAL

Beyond your expectations

High View Road Lightwater GU18

£6,499 Per Month - Available Now

HAMPTONS
INTERNATIONAL

A modern family home tucked away in a secluded position in Lightwater village moments from the Country Park. There is accommodation of approximately 7,500 square feet, south facing gardens of 0.88 acre with the added benefit of a leisure complex. The property can be offered on an unfurnished, furnished or part furnished basis.

6 Bedrooms | 5 Reception rooms | 4 Bathrooms | Detached | Village | Garden | 7507 Approx Sq Ft | 0.88 Acres.

Description

A modern family home quietly tucked away in an elevated position within moments from the Country Park. With accommodation over 7,500sqft there is ample space throughout for family living and ideal for entertaining. The property provides five generous sized bedrooms, four bathrooms, four reception rooms and a kitchen/breakfast room, within a floor plan that allows genuine flexibility as to how the rooms can be used and furnished. There is the added benefit of south facing gardens of 0.88 acre, an astroturf pitch and leisure complex including gymnasium, Jacuzzi, and an indoor infinity pool with changing and showering facilities as well as a wall of solarlux bifolding doors that open onto the beautiful rear garden. There is a detached double garage with separate store room and

bonus room above ideal as a games/media room. The property can be offered on an unfurnished, furnished or part furnished basis.



Hamptons Sunningdale Lettings

6 Broomhall Buildings

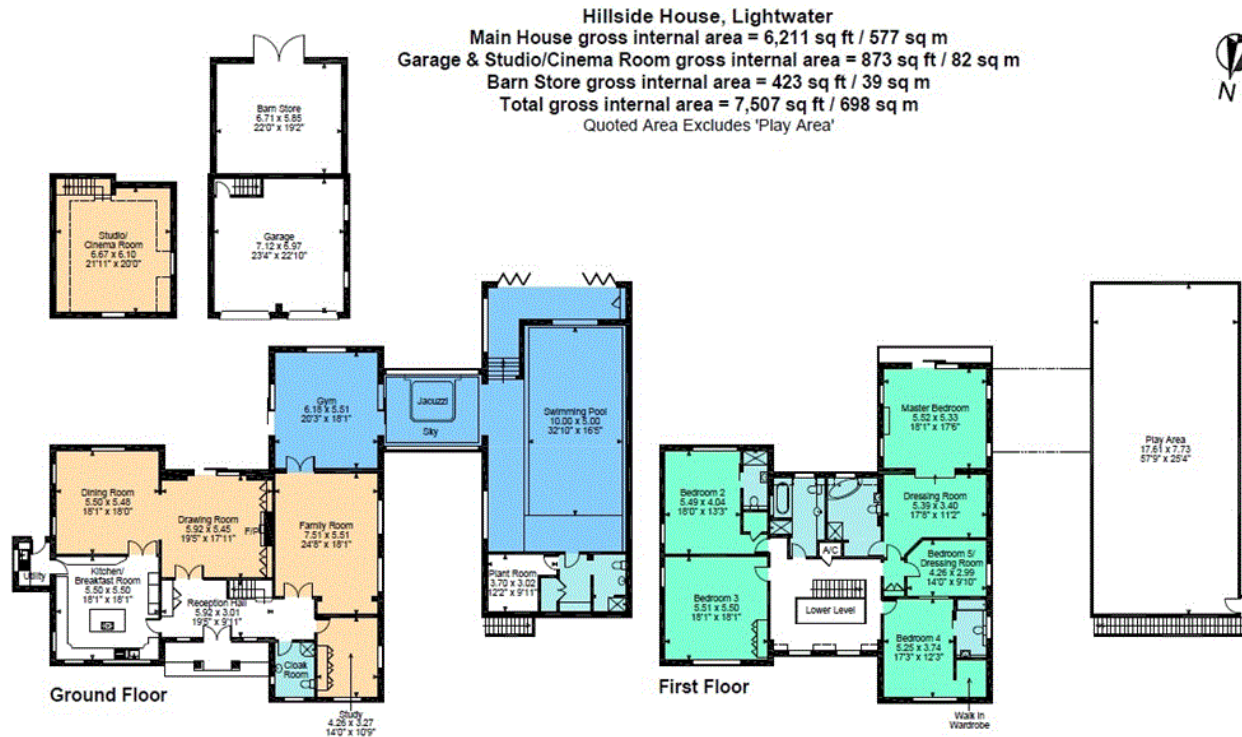
Sunningdale SL5 0DU

Tel: 01344 873081 - sunningdalelettings@hamptons-int.com

www.hamptons.co.uk

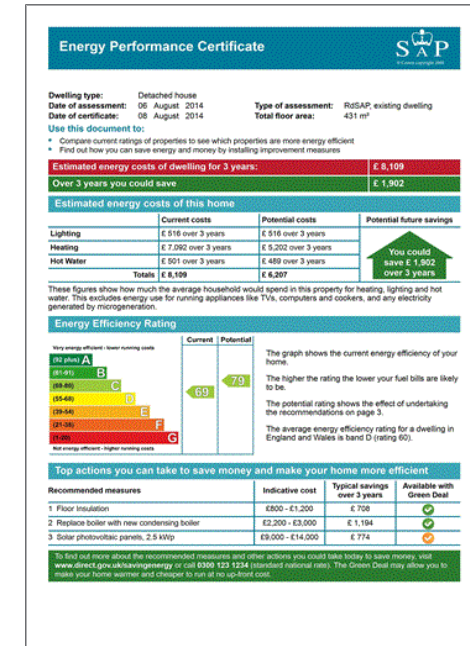
Floorplan

Energy Performance Certificate (EPC)



FOR ILLUSTRATIVE PURPOSES ONLY - NOT TO SCALE
 The position & size of doors, windows, appliances and other features are approximate only.
 □ □ □ □ Denotes restricted head height
 © ehous. Unauthorised reproduction prohibited. Drawing ref. dig/8211130/WFF

For clarification, we wish to inform prospective purchasers that we have prepared these sales particulars as a general guide. We have not verified permissions, nor carried out a survey, tested the services, appliances and specific fittings. Room sizes are approximate and rounded: they are taken between internal wall surfaces and therefore include cupboards/shelves, etc. Accordingly, they should not be relied upon for carpets and furnishings. It should also be noted that all fixtures and fittings, carpeted, curtains/blinds, kitchen equipment and garden statuary, whether fitted or not, are deemed removable by the vendor unless specifically itemised with these particulars.



Hamptons Sunningdale Lettings

6 Broomhall Buildings

Sunningdale SL5 0DU

Tel: 01344 873081 - sunningdalelettings@hamptons-int.com

www.hamptons.co.uk

HAMPTONS
 INTERNATIONAL

Beyond your expectations