



Kings Road, SW3

£675 Per Week - Available 15/08/2016

**HAMPTONS**  
INTERNATIONAL

*Beyond your expectations*

*A lovely one bedroom ground floor apartment in this Mansion Block on the Kings Road, SW3.*

### Description

This lovely one bedroom ground floor apartment has been finished to a high standard and offers contemporary living in a period Mansion Block. The apartment has a lovely wood floor reception room with a fully fitted modern open plan kitchen as well as double bedroom and bathroom. This is an ideal apartment for a professional looking for a home in Chelsea.

### Situation

Located on the Kings Road the apartment benefits from the local shops, bars and restaurants, including the Blue Bird restaurant, as well as the local bus routes heading along the River, towards Sloane Square to the east and Fulham to the west.

### Furnishing

Furnished



kitchen2



bedroom

### Hamptons Chelsea Lettings

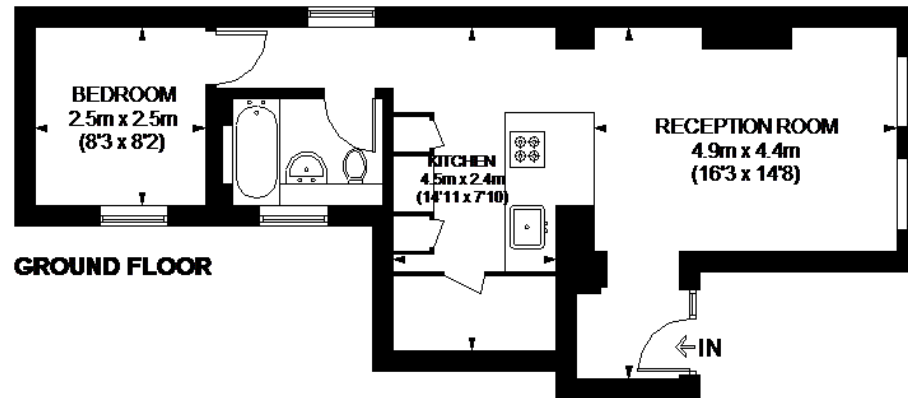
134 Fulham Road, Chelsea

London SW10 9PY

Tel: 020 7370 0774 - [chelsealettings@hamptons-int.com](mailto:chelsealettings@hamptons-int.com)

[www.hamptons.co.uk](http://www.hamptons.co.uk)

## Floorplan



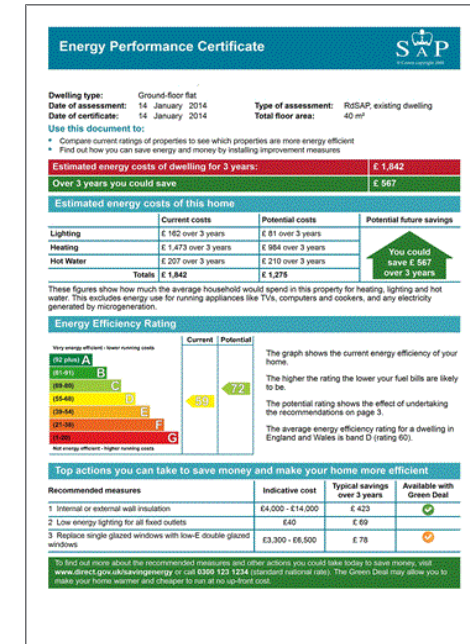
## ALEXANDRA MANSIONS



APPROXIMATE GROSS INTERNAL AREA  
GROUND FLOOR  
464 SQ. FT. (43.1 SQ. M.)

This plan is for layout guidance only. Not drawn to scale and not to be used for construction. Windows and door openings are approximate. Whilst every care is taken in the preparation of this plan, please check all dimensions, volumes and components before building any structure or fitting any items. Please be advised that if any building regulations or planning permissions are required, they must be carried out by the property (D1167/491).

## Energy Performance Certificate (EPC)



**For clarification,** we wish to inform prospective purchasers that we have prepared these sales particulars as a general guide. We have not verified permissions, nor carried out a survey, tested the services, appliances and specific fittings. Room sizes are approximate and rounded: they are taken between internal wall surfaces and therefore include cupboards/shelves, etc. Accordingly, they should not be relied upon for carpets and furnishings. It should also be noted that all fixtures and fittings, carpeted, curtains/blinds, kitchen equipment and garden statuary, whether fitted or not, are deemed removable by the vendor unless specifically itemised with these particulars.

## Hamptons Chelsea Lettings

134 Fulham Road, Chelsea

London SW10 9PY

Tel: 020 7370 0774 - [chelsealettings@hamptons-int.com](mailto:chelsealettings@hamptons-int.com)

[www.hamptons.co.uk](http://www.hamptons.co.uk)

**HAMPTONS**  
INTERNATIONAL

*Beyond your expectations*