



Ashburn Place London SW7

£315 Per Week - Available Now

**HAMPTONS**  
INTERNATIONAL

*Beyond your expectations*

*A fantastic studio apartment near to Gloucester Road Underground Station in South Kensington, SW7.*

Studio Room | Wood Floors | Kitchen | Bathroom | WC.

### Description

A fantastic studio apartment in this period conversion in SW7. The studio room itself is 22'10 into the bay window and has a pull down bed so maximising space during the day. With a separate Kitchen, Bathroom and WC the apartment is an ideal home for a single professional looking for an apartment near to Gloucester Road Underground Station.

### Situation

Being located on Ashburn Gardens the apartment is well located for the shopping amenities on both the Old Brompton Road and Gloucester Road in SW7. As well as the local buses there is easy access to the A4 and M4 to the West. The closest Underground Station is Gloucester Road (District, Circle and Piccadilly Lines).

### Furnishing

Furnished



Kitchen



1-34-ashburn-place-001

### Hamptons Chelsea Lettings

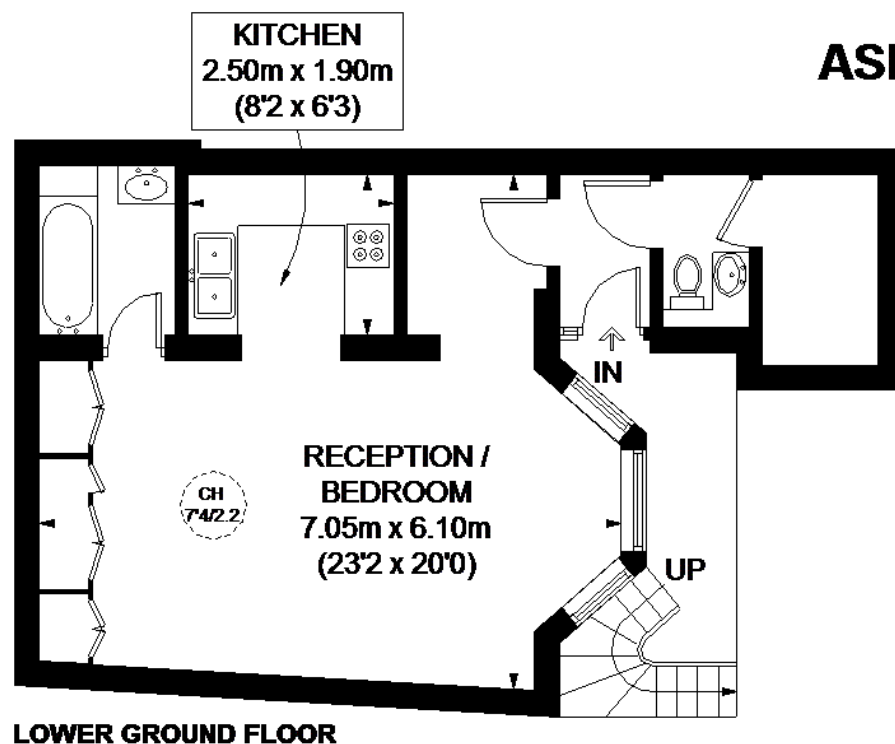
134 Fulham Road, Chelsea

London SW10 9PY

Tel: 020 7370 0774 - [chelsealettings@hamptons-int.com](mailto:chelsealettings@hamptons-int.com)

[www.hamptons.co.uk](http://www.hamptons.co.uk)

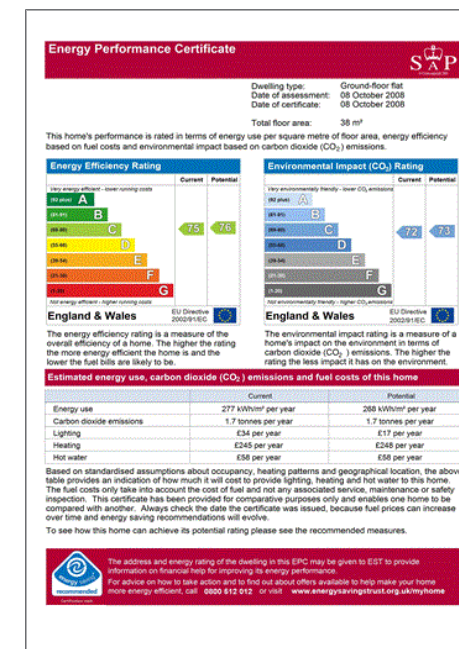
## Floorplan



APPROXIMATE GROSS INTERNAL AREA  
496 SQ. FT. (46.1 SQ. M.)

This plan is for layout guidance only. Not drawn to scale unless stated. Windows and door openings are approximate. Whilst every care is taken in the preparation of this plan, please check all dimensions, shapes and compass bearings before making any decisions related upon them. Please be advised that Hamptons International / our agents have not seen or reviewed any building regulations or planning permission in relation to works carried out to the property (00240893)

## Energy Performance Certificate (EPC)



**For clarification,** we wish to inform prospective purchasers that we have prepared these sales particulars as a general guide. We have not verified permissions, nor carried out a survey, tested the services, appliances and specific fittings. Room sizes are approximate and rounded: they are taken between internal wall surfaces and therefore include cupboards/shelves, etc. Accordingly, they should not be relied upon for carpets and furnishings. It should also be noted that all fixtures and fittings, carpeted, curtains/blinds, kitchen equipment and garden statuary, whether fitted or not, are deemed removable by the vendor unless specifically itemised with these particulars.

## Hamptons Chelsea Lettings

134 Fulham Road, Chelsea

London SW10 9PY

Tel: 020 7370 0774 - [chelsealettings@hamptons-int.com](mailto:chelsealettings@hamptons-int.com)

[www.hamptons.co.uk](http://www.hamptons.co.uk)

**HAMPTONS**  
INTERNATIONAL

Beyond your expectations