



Thirlestaine Road Cheltenham GL53

£3,250 Per Month - Available 09/11/2017

HAMPTONS
INTERNATIONAL

Beyond your expectations

Thirlestaine Road Cheltenham GL53

£3,250 Per Month - Available 09/11/2017

HAMPTONS
INTERNATIONAL

A fabulous and spacious (in excess of 2,700 sq ft) apartment situated on the ground floor of this Grade II listed Grand Hall.

3 Double Bedrooms | Large and Spacious | 3 Bathrooms.

Description

The property is accessed from a grand communal reception hall with marble pillars and a high ceiling with ornate cornice. One enters the apartment via a hall with decorative mirrors and a glazed roof; drawing room with a feature compass ceiling, full length sash window and a pair of doors opening into the principal bedroom which has a high ceiling, full length window with shutters. A door opens to an en-suite dressing room with hanging rail and shelving and door to an en-suite bathroom with free-standing bath and separate shower. There is a large kitchen/dining/family room, French windows with decorative fanlight over open to garden, sash window also with decorative fanlight, 2 ovens, microwave, coffee machine, dishwasher, fridge and freezer, wine cooler and induction hob

with concealed extractor adjacent. There is a laundry room off the hall with space for washing machine and tumble drier; cloakroom; store cupboard. The second double bedroom suite has an en-suite dressing room with hanging rail, shelving and drawers and en-suite shower room. The third double bedroom has The third double bedroom has two large sash windows and a range of built-in wardrobes and en-suite shower room.



2 Thirlestaine Hall fpz196937 (10)



2 Thirlestaine Hall fpz196937 (8)

Hamptons Cheltenham Lettings

105 Promenade

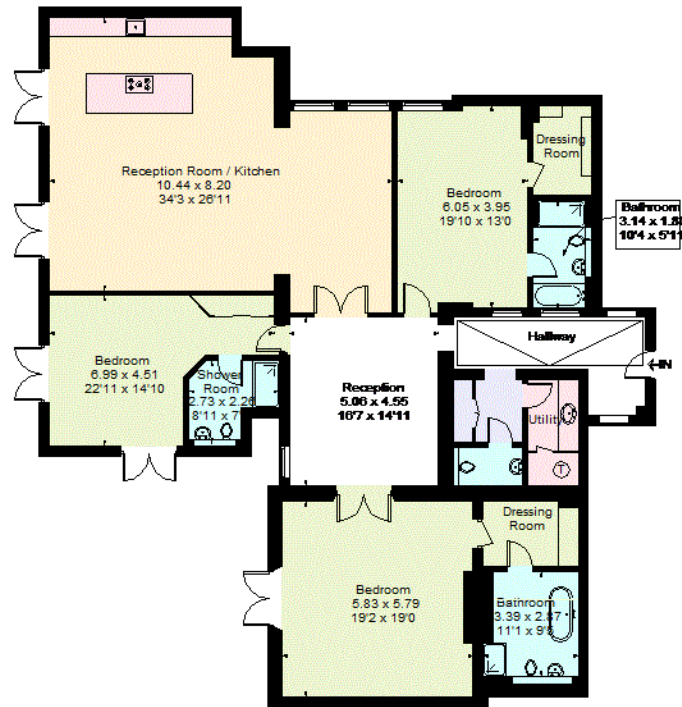
Cheltenham GL50 1NW

Tel: 01242 263559 - cheltenhamlettings@hamptons-int.com

www.hamptons.co.uk

Thirstaine Place, Cheltenham

Approximate Gross Internal Area = 254.6 sq m / 2741 sq ft



Raised Ground Floor

FLOORPLANZ © 2017 0203 9056099 Ref: 196937

This plan is for layout guidance only. Drawn in accordance with RICS guidelines. Not drawn to scale unless stated. Windows & door openings are approximate. Whilst every care is taken in the preparation of this plan, please check all dimensions, shapes & compass bearings before making any decisions reliant upon them.

For clarification, we wish to inform prospective purchasers that we have prepared these sales particulars as a general guide. We have not verified permissions, nor carried out a survey, tested the services, appliances and specific fittings. Room sizes are approximate and rounded: they are taken between internal wall surfaces and therefore include cupboards/shelves, etc. Accordingly, they should not be relied upon for carpets and furnishings. It should also be noted that all fixtures and fittings, carpeted, curtains/blinds, kitchen equipment and garden statuary, whether fitted or not, are deemed removable by the vendor unless specifically itemised with these particulars.

