



Wapping High Street London E1W

£300 Per Week - Available Now

HAMPTONS
INTERNATIONAL

Beyond your expectations

Wapping High Street London E1W

£300 Per Week - Available Now

HAMPTONS
INTERNATIONAL

Charming studio apartment within this popular Wapping development boasting a separate kitchen, bathroom and off street parking with excellent transport links close by, measuring 377 sq. ft, presented in excellent order.

Studio Apartment | Separate Kitchen | First Floor | Parking Included | Furnished | Superb Transport Links.

Description

Charming studio apartment within this popular Wapping development boasting a separate kitchen, bathroom and off street parking with excellent transport links close by, measuring 377 sq. ft, presented in excellent order.

Furnishing

Furnished

Situation

Wapping and St Katharine Docks are set alongside Tower Bridge. Located on the northern bank of the Thames, within easy reach of Tower Hill tube (District Line) and the Docklands Light Railway, as well as numerous sights including The Tower of London and the Tate Modern. Within St. Katharine Docks, there are an array of boutiques, bars and restaurants.



Studio



Studio

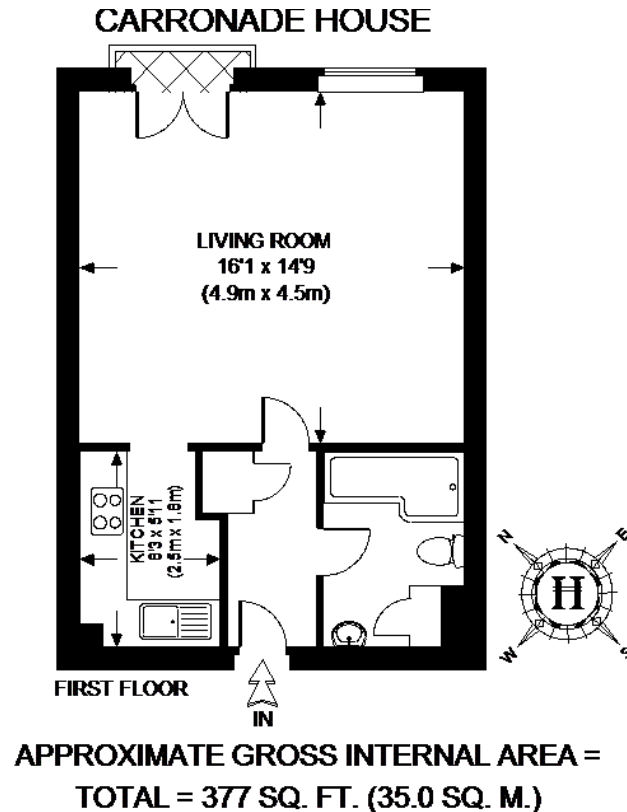
Hamptons Tower Bridge Lettings

41 Shad Thames, Tower Bridge

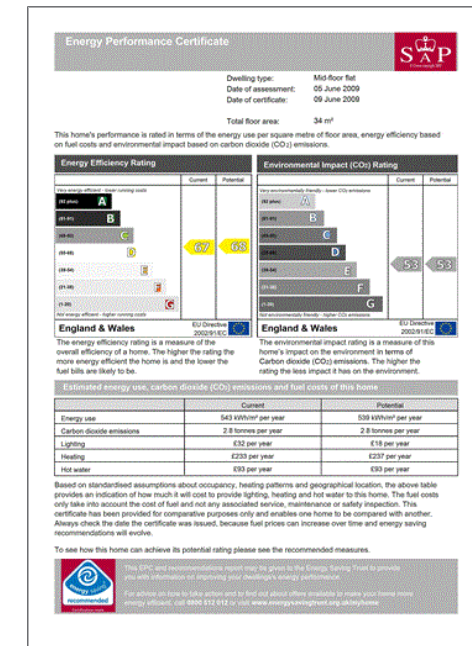
London SE1 2NJ

Tel: 020 7407 3172 - towerbridgelettings@hamptons-int.com

www.hamptons.co.uk



This plan is for layout guidance only. Not drawn to scale unless stated. Windows & door openings are approximate. Whilst every care is taken in the preparation of this plan, please check all dimensions, shapes & compass bearings before making any decisions reliant upon them. Please be advised that Hamptons International / our agents have not seen or reviewed any building regulations or planning permission in relation to works carried out to the property.



For clarification, we wish to inform prospective purchasers that we have prepared these sales particulars as a general guide. We have not verified permissions, nor carried out a survey, tested the services, appliances and specific fittings. Room sizes are approximate and rounded: they are taken between internal wall surfaces and therefore include cupboards/shelves, etc. Accordingly, they should not be relied upon for carpets and furnishings. It should also be noted that all fixtures and fittings, carpeted, curtains/blinds, kitchen equipment and garden statuary, whether fitted or not, are deemed removable by the vendor unless specifically itemised with these particulars.