



Keppel Row London SE1

£950 Per Week - Available 05/12/2017

**HAMPTONS**  
INTERNATIONAL

*Beyond your expectations*

*New to the Lettings market, we are thrilled to present this immaculate penthouse apartment that is moments from the amenities and transport links of Bankside and London Bridge. This property boasts contemporary fixtures/fittings throughout, wooden flooring, air conditioning and under floor heating (in bedrooms), and spans over 1,900 sq. ft. of internal space with two south facing balconies.*

Penthouse Apartment | High Specification | Luxury Fixtures/Fittings | South Facing | Two Balconies | Three Bedrooms | Master Bathroom Suite | Additional Bathroom & En-Suite | Over 1,900 Sq. Ft. | Utility Room Area + W/C | Wooden Flooring (Exc Bedrooms) | Air Conditions | Underfloor Heating (Bath/Shower Rooms) | Parking Available.

### Description

New to the Lettings market, we are thrilled to present this immaculate penthouse apartment that is moments from the amenities and transport links of Bankside and London Bridge. This property boasts contemporary fixtures/fittings throughout, wooden flooring (excluding bedrooms and tiled areas), air conditioning and under floor heating (in bathrooms), and spans over 1,900 sq. ft. of internal space with two south facing balconies. The master bedroom is filled with fitted wardrobes, and leads to a master bathroom with separate shower enclosure. Two further bedrooms boast a bathroom/shower room each, and also have some fitted storage. All bedrooms are south facing. Secure parking is available.

### Situation

The area of Bankside is a hive of activity with many attractions on the doorstep including the renowned and award winning Borough Market, London's oldest food market which attracts both locals and tourists. Further highlights of the area are The Tate Modern and the magnificent Southwark Cathedral. For those not walking over a bridge into the City, transport options include Blackfriars Station (new entrance and ticket hall on the south side of the river), London Bridge main line station and tube (Jubilee & Northern Lines), Waterloo mainline station and tube or Southwark tube (Jubilee line) and the Clipper services at Bankside & London Bridge.

### Furnishing

Unfurnished



Terrace



17-America-House-015

### Hamptons Tower Bridge Lettings

41 Shad Thames, Tower Bridge

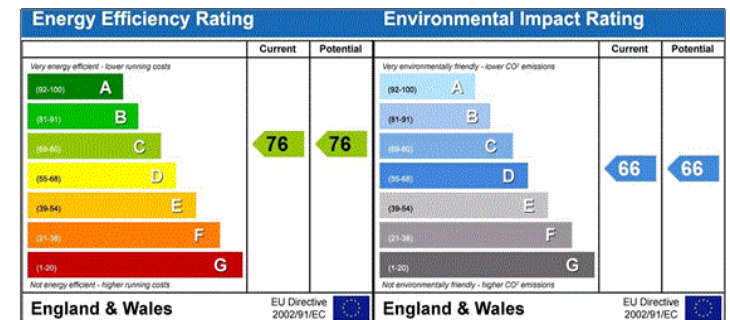
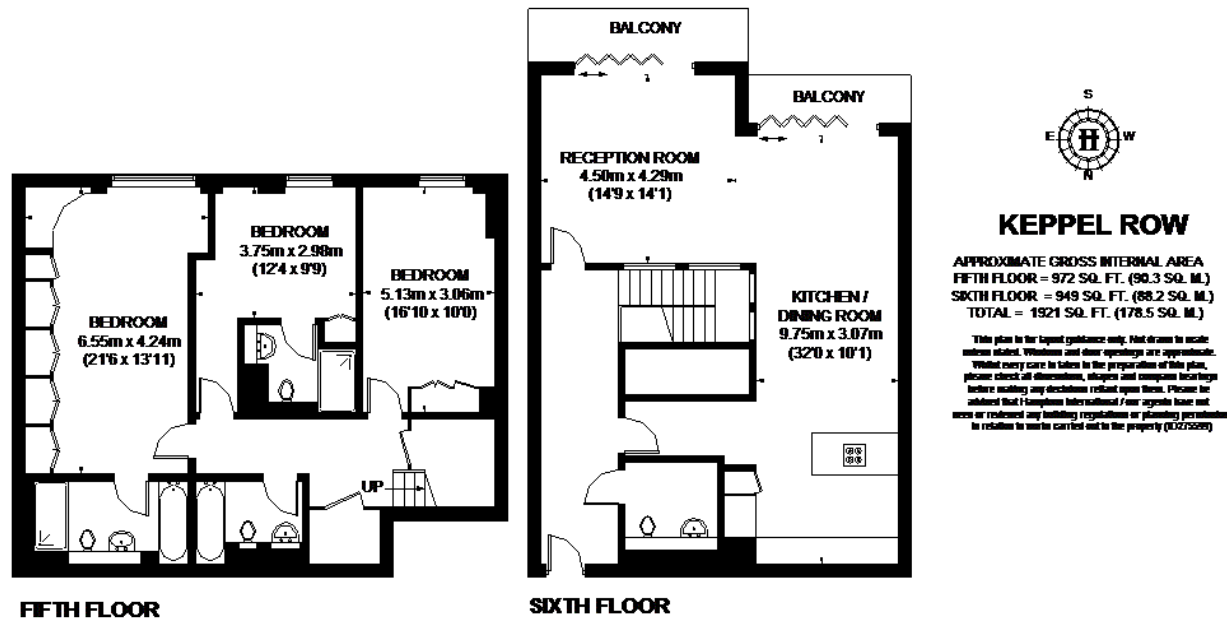
London SE1 2NJ

Tel: 020 7407 3172 - towerbridgelettings@hamptons-int.com

[www.hamptons.co.uk](http://www.hamptons.co.uk)

## Floorplan

## Energy Performance Certificate (EPC)



**For clarification,** we wish to inform prospective purchasers that we have prepared these sales particulars as a general guide. We have not verified permissions, nor carried out a survey, tested the services, appliances and specific fittings. Room sizes are approximate and rounded: they are taken between internal wall surfaces and therefore include cupboards/shelves, etc. Accordingly, they should not be relied upon for carpets and furnishings. It should also be noted that all fixtures and fittings, carpeted, curtains/blinds, kitchen equipment and garden statuary, whether fitted or not, are deemed removable by the vendor unless specifically itemised with these particulars.

### Hamptons Tower Bridge Lettings

41 Shad Thames, Tower Bridge

London SE1 2NJ

Tel: 020 7407 3172 - towerbridgelettings@hamptons-int.com

[www.hamptons.co.uk](http://www.hamptons.co.uk)

**HAMPTONS**  
INTERNATIONAL

Beyond your expectations