



Pumping Station Road London W4

£499 Per Week - Available Now

**HAMPTONS**  
INTERNATIONAL

*Beyond your expectations*

# Pumping Station Road London W4

£499 Per Week - Available Now

**HAMPTONS**  
INTERNATIONAL

*A stunning two double bedroom ground floor apartment situated within a popular riverside development, with the local amenities of Chiswick High Road and major road links conveniently nearby.*

Two Double Bedrooms | Two Bathrooms | Secure Allocated Parking | Easy Access To Major Road Links | Secluded Patio Area | Modern Kitchen & Bathrooms | Riverside Development.

## Description

A stunning ground floor apartment situated within a popular riverside development, with the local amenities of Chiswick High Road and major road links conveniently nearby. This spacious property is beautifully presented throughout comprising two double bedrooms, two bathrooms, a modern fitted kitchen, ample reception room leading onto a wonderful conservatory/dining area and a private patio area.

## Furnishing

Furnished



Kitchen



Patio

## Hamptons Chiswick Lettings

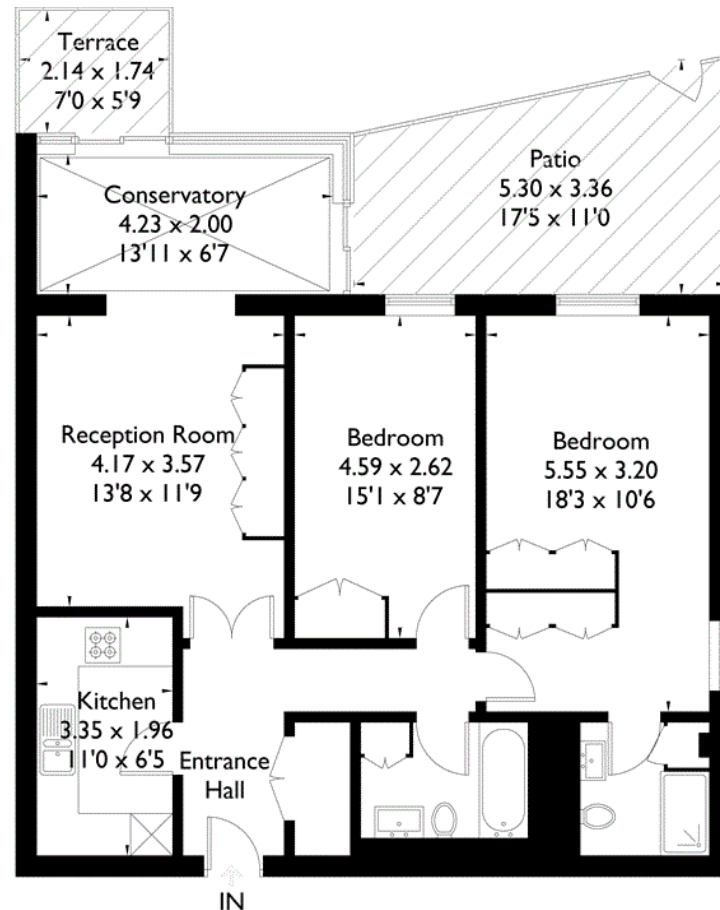
48 Turnham Green Terrace, Chiswick

London W4 1QP

Tel: 0208 987 8443 - [chiswicklettings@hamptons-int.com](mailto:chiswicklettings@hamptons-int.com)

[www.hamptons.co.uk](http://www.hamptons.co.uk)

## Floorplan



## Old Chiswick Yard W4

Approximate Gross Internal Area  
84.2 sq m / 906 sq ft

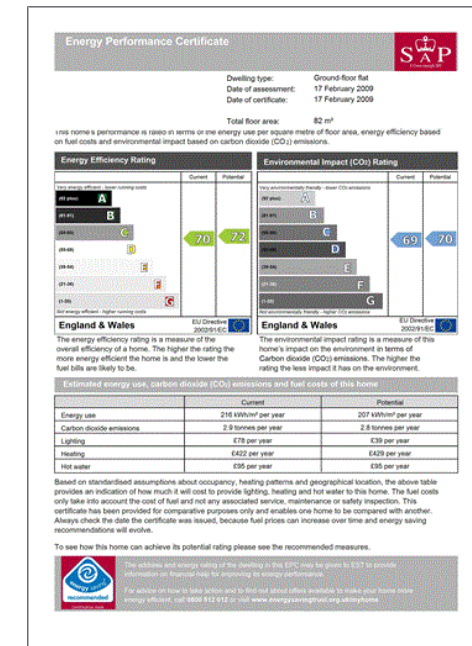
## Ground Floor



Floorplanz © 2015  
0845 6344080 Ref: 152297

This plan is for layout guidance only.  
Drawn in accordance with  
RICS guidelines. Not drawn to  
scale, unless stated. Windows &  
door openings are approximate.  
Whilst every care is taken in the  
preparation of this plan, please check  
all dimensions, shapes & compass  
bearings before making any  
decisions reliant upon them.

## Energy Performance Certificate (EPC)



**For clarification,** we wish to inform prospective purchasers that we have prepared these sales particulars as a general guide. We have not verified permissions, nor carried out a survey, tested the services, appliances and specific fittings. Room sizes are approximate and rounded: they are taken between internal wall surfaces and therefore include cupboards/shelves, etc. Accordingly, they should not be relied upon for carpets and furnishings. It should also be noted that all fixtures and fittings, carpeted, curtains/blinds, kitchen equipment and garden statuary, whether fitted or not, are deemed removable by the vendor unless specifically itemised with these particulars.

## Hamptons Chiswick Lettings

48 Turnham Green Terrace, Chiswick

London W4 1QP

Tel: 0208 987 8443 - [chiswicklettings@hamptons-int.com](mailto:chiswicklettings@hamptons-int.com)

[www.hamptons.co.uk](http://www.hamptons.co.uk)

**HAMPTONS**  
INTERNATIONAL

Beyond your expectations