



Glebe Street London W4

£695 Per Week - Available 13/07/2017

HAMPTONS
INTERNATIONAL

Beyond your expectations

A newly decorated three bedroom house in the sought after Glebe Estate moments from the High Road featuring newly laid hard wood flooring, two bathrooms and pretty south facing garden.

Three Double Bedrooms | Two Bathrooms | South Facing Garden | Permit Parking | Unfurnished | Newly Refurbished.

Description

A newly decorated three bedroom house on a quiet street in the sought after Glebe Estate moments from the High Road. The house comprises double reception room with hard wood flooring, eat in kitchen with access to a south facing garden, three double bedrooms, one with an en suite shower room and an additional large family bathroom. Glebe Street is well located for all the amenities of the Chiswick High Road. It is within walking distance to both Turnham Green and Chiswick Park tube stations and the for the motorist the A4/M4 is close by.

Furnishing

Unfurnished



Reception



Kitchen

Hamptons Chiswick Lettings

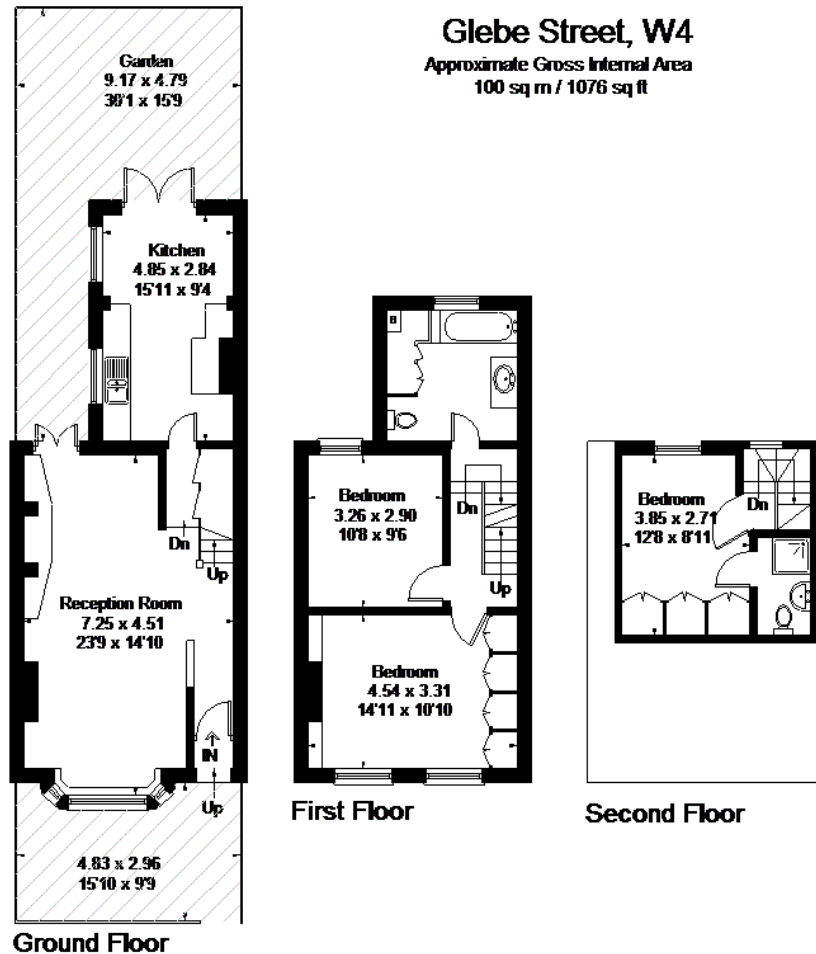
48 Turnham Green Terrace, Chiswick

London W4 1QP

Tel: 0208 987 8443 - chiswicklettings@hamptons-int.com

www.hamptons.co.uk

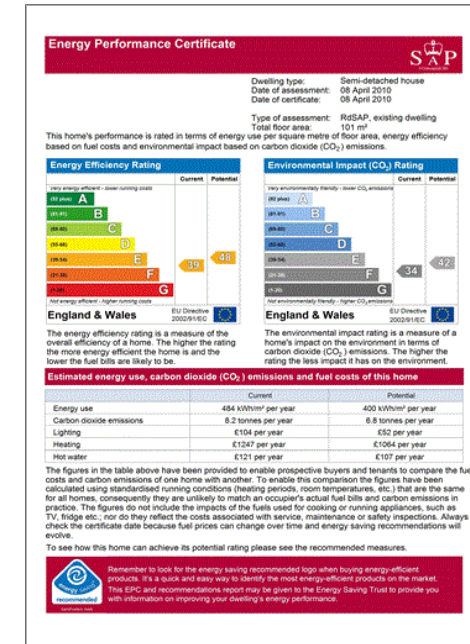
Floorplan



Floorplan © 2014
0845 6344688 Ref: 138730

This plan is for layout guidance only.
Drawn in accordance with
RICS guidelines. Not drawn to
scale, unless stated. Windows &
door openings are approximate.
Whilst every care is taken in the
preparation of this plan, please check
all dimensions, shapes & compass
bearings before making any
decisions reliant upon them.

Energy Performance Certificate (EPC)



For clarification, we wish to inform prospective purchasers that we have prepared these sales particulars as a general guide. We have not verified permissions, nor carried out a survey, tested the services, appliances and specific fittings. Room sizes are approximate and rounded: they are taken between internal wall surfaces and therefore include cupboards/shelves, etc. Accordingly, they should not be relied upon for carpets and furnishings. It should also be noted that all fixtures and fittings, carpeted, curtains/blinds, kitchen equipment and garden statuary, whether fitted or not, are deemed removable by the vendor unless specifically itemised with these particulars.

Hamptons Chiswick Lettings

48 Turnham Green Terrace, Chiswick

London W4 1QP

Tel: 0208 987 8443 - chiswicklettings@hamptons-int.com

www.hamptons.co.uk

HAMPTONS
INTERNATIONAL

Beyond your expectations