



Alwyn Avenue London W4

£1,269 Per Week - Available Now

HAMPTONS
INTERNATIONAL

Beyond your expectations

A lovely semi detached Victorian family home in this sought after street in central Chiswick with five double bedrooms, two receptions, eat in kitchen and pretty garden.

Five Double Bedrooms | Two Bathrooms | Two Reception Rooms | Eat-in Kitchen | Garden | Permit Parking | Unfurnished.

Description

A lovely five bedroom semi detached Victorian family home in this sought after street in central Chiswick. Featuring neutral décor throughout the house comprises front reception room with fireplace, rear reception room with fireplace and access to the garden, cloakroom and modern eat in kitchen leading to a lovely lawned garden. The first floor comprises large master bedroom with bay window and feature fireplace, two further double bedrooms and family bathroom. A loft conversion offers two further double bedrooms and a luxury shower room. Alwyn Avenue is well located for all the amenities of the Chiswick High Road, and for the motorist the A4/M4 is moments away for access into and out of London.

Furnishing

Furnished



Reception Room



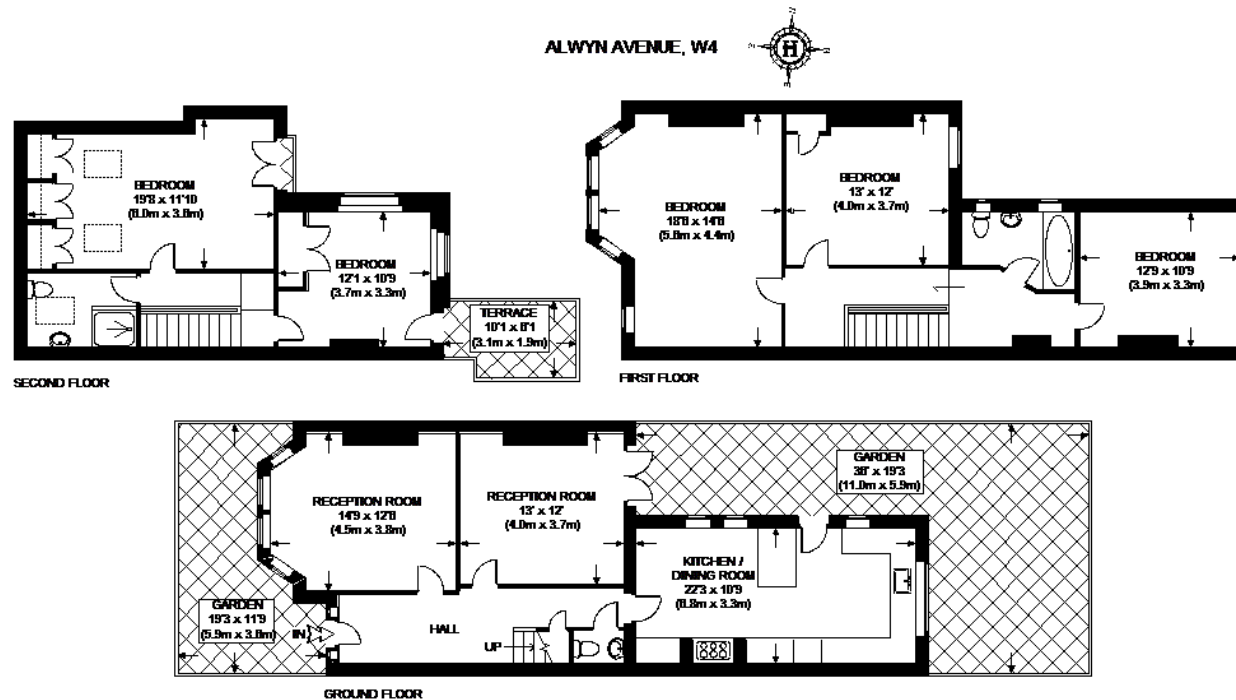
Garden

Hamptons Chiswick Lettings

48 Turnham Green Terrace, Chiswick
London W4 1QP

Tel: 0208 987 8443 - chiswicklettings@hamptons-int.com

www.hamptons.co.uk



APPROXIMATE GROSS INTERNAL AREA =

TOTAL = 1932 SQ. FT. (179.5 SQ. M.)

This plan is for layout guidance only. Not drawn to scale unless stated. Windows & door openings are approximate. Whilst every care is taken in the preparation of this plan, please check all dimensions, shapes & compass bearings before making any decisions reliant upon them. Please be advised that Hamptons International / our agents have not seen or reviewed any building regulations or planning permission in relation to works carried out to the property.

For clarification, we wish to inform prospective purchasers that we have prepared these sales particulars as a general guide. We have not verified permissions, nor carried out a survey, tested the services, appliances and specific fittings. Room sizes are approximate and rounded: they are taken between internal wall surfaces and therefore include cupboards/shelves, etc. Accordingly, they should not be relied upon for carpets and furnishings. It should also be noted that all fixtures and fittings, carpeted, curtains/blinds, kitchen equipment and garden statuary, whether fitted or not, are deemed removable by the vendor unless specifically itemised with these particulars.

Currently not available

Hamptons Chiswick Lettings

48 Turnham Green Terrace, Chiswick

London W4 1QP

Tel: 0208 987 8443 - chiswicklettings@hamptons-int.com

www.hamptons.co.uk

HAMPTONS
INTERNATIONAL

Beyond your expectations