



South Parade London W4

£1,150 Per Week - Available 16/01/2017

HAMPTONS
INTERNATIONAL

Beyond your expectations

A substantial six bedroom semi-detached family house located in the heart of Bedford Park Conservation area is beautifully presented throughout boasting over 2200 sq ft of space which has recently been redecorated boasts an enviable location with views over Acton Green Common and off street parking for two cars.

Six Bedrooms | Three Bathrooms | Two Reception Rooms | Eat In Kitchen | Well Maintained Garden | Off Street Parking | Views Over Acton Green Common | Furnished OR Unfurnished.

Description

A substantial six bedroom semi-detached family house located in the heart of Bedford Park Conservation area is beautifully presented throughout boasting over 2200 sq ft of space which has recently been redecorated boasts an enviable location with views over Acton Green Common and off street parking for two cars. Arranged over three floors, this wonderful family home boasts two wonderful reception rooms, superb eat in kitchen furnished with high end appliances and access onto a well maintained garden. On the first floor there is a wonderful master bedroom with views over Acton Green Common, fitted wardrobes and en-suite bathroom, two further double bedrooms both with fitted wardrobes, single bedroom/study and family bathroom. To the top of the house there

are two additional double bedrooms and family bathroom. South Parade is located close to Turnham Green tube station (District line, zone 2). A selection of buses runs from Chiswick High Road towards Hammersmith (for Hammersmith tube and bus station), White City (for Westfield shopping centre) and Fulham.

Furnishing

Furnished



Front External



Second Reception Room

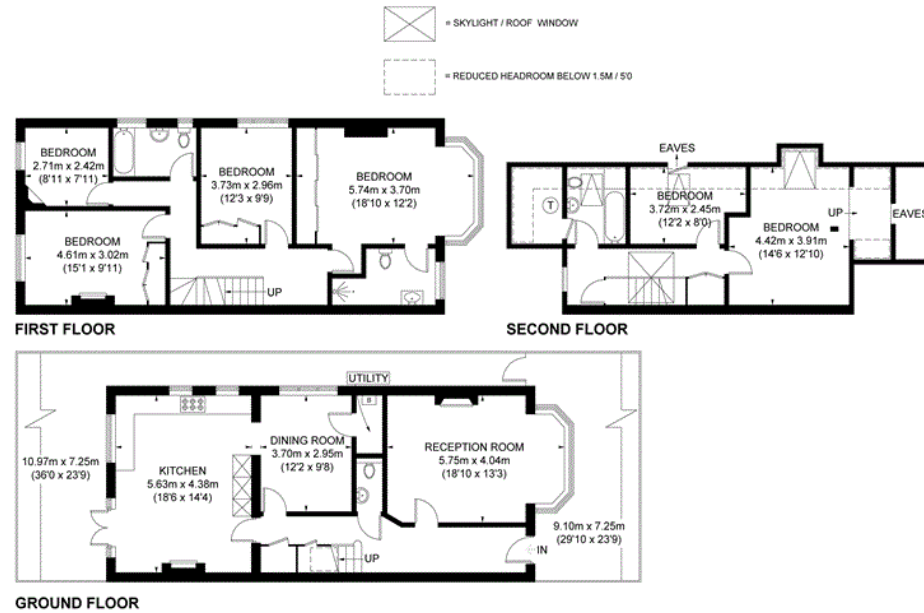
Hamptons Chiswick Lettings

48 Turnham Green Terrace, Chiswick
London W4 1QP

Tel: 0208 987 8443 - chiswicklettings@hamptons-int.com

www.hamptons.co.uk

Floorplan



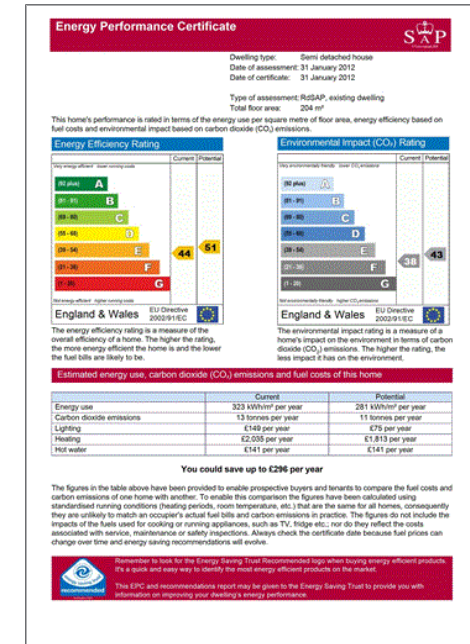
SOUTH PARADE



APPROXIMATE GROSS INTERNAL AREA
(EXCLUDING EAVES)
 GROUND FLOOR = 848 SQ. FT. (78.8 SQ. M.)
 FIRST FLOOR = 845 SQ. FT. (78.5 SQ. M.)
 SECOND FLOOR = 532 SQ. FT. (49.4 SQ. M.)
 TOTAL = 2225 SQ. FT. (206.7 SQ. M.)

This plan is for layout guidance only. Not drawn to scale unless stated. Windows and door openings are approximate. Whilst every care is taken in the preparation of this plan, please check all dimensions, shapes and compass bearings before making any decisions reliant upon them. Please be advised that Hamptons International / our agents have not seen or reviewed any building regulations or planning permission in relation to works carried out to the property (Ref: 163847)

Energy Performance Certificate (EPC)



For clarification, we wish to inform prospective purchasers that we have prepared these sales particulars as a general guide. We have not verified permissions, nor carried out a survey, tested the services, appliances and specific fittings. Room sizes are approximate and rounded: they are taken between internal wall surfaces and therefore include cupboards/shelves, etc. Accordingly, they should not be relied upon for carpets and furnishings. It should also be noted that all fixtures and fittings, carpeted, curtains/blinds, kitchen equipment and garden statuary, whether fitted or not, are deemed removable by the vendor unless specifically itemised with these particulars.

Hamptons Chiswick Lettings

48 Turnham Green Terrace, Chiswick

London W4 1QP

Tel: 0208 987 8443 - chiswicklettings@hamptons-int.com

www.hamptons.co.uk

HAMPTONS
INTERNATIONAL

Beyond your expectations