



Fauconberg Road Sutton Court W4

£520 Per Week - Available 04/12/2017

HAMPTONS
INTERNATIONAL

Beyond your expectations

Fauconberg Road Sutton Court W4

£520 Per Week - Available 04/12/2017

HAMPTONS
INTERNATIONAL

A simply stunning one bedroom flat on the top floor of a popular mansion block which has been refurbished to a good standard featuring spacious rooms and communal gardens.

One Bedroom | One Bathroom | Communal Garden | Free On Street Parking | Fully Furnished | 4th Floor - Top | Short Let - All Bills Inc..

Description

A simply stunning one bedroom flat on the top floor of a popular mansion block boasting well proportioned rooms. The flat comprises double bedroom with fitted wardrobes, modern bathroom, separate cloakroom, fully fitted kitchen and spacious reception room with lovely views over the communal gardens.

Furnishing

Furnished



Sutton Court Flat 59 165405 (17)



Sutton Court Flat 59 165405 (15)

Hamptons Chiswick Lettings

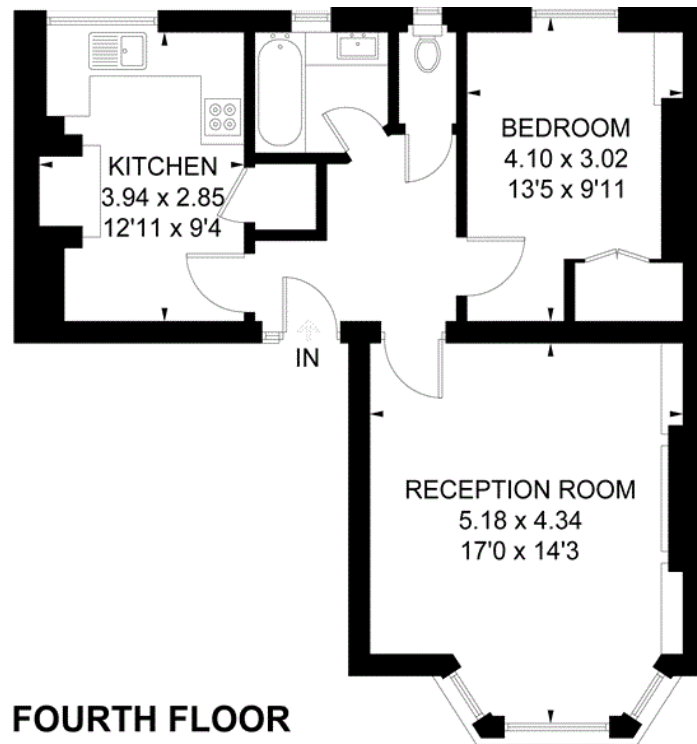
48 Turnham Green Terrace, Chiswick

London W4 1QP

Tel: 0208 987 8443 - chiswicklettings@hamptons-int.com

www.hamptons.co.uk

Floorplan



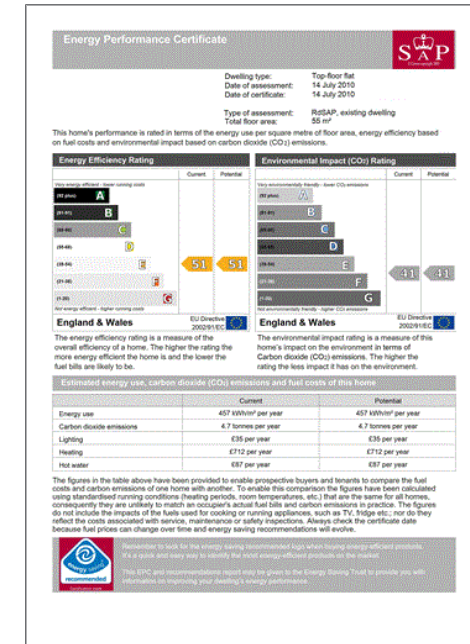
FAUCONBERG ROAD



APPROXIMATE GROSS INTERNAL AREA
618 SQ. FT. (57.4 SQ. M.)

This plan is for layout guidance only. Not drawn to scale unless stated. Windows and door openings are approximate. Whilst every care is taken in the preparation of this plan, please check all dimensions, shapes and compass bearings before making any decisions reliant upon them. Please be advised that Hamptons International / our agents have not seen or reviewed any building regulations or planning permission in relation to works carried out to the property (Ref: 165405).

Energy Performance Certificate (EPC)



For clarification, we wish to inform prospective purchasers that we have prepared these sales particulars as a general guide. We have not verified permissions, nor carried out a survey, tested the services, appliances and specific fittings. Room sizes are approximate and rounded: they are taken between internal wall surfaces and therefore include cupboards/shelves, etc. Accordingly, they should not be relied upon for carpets and furnishings. It should also be noted that all fixtures and fittings, carpeted, curtains/blinds, kitchen equipment and garden statuary, whether fitted or not, are deemed removable by the vendor unless specifically itemised with these particulars.

Hamptons Chiswick Lettings

48 Turnham Green Terrace, Chiswick

London W4 1QP

Tel: 0208 987 8443 - chiswicklettings@hamptons-int.com

www.hamptons.co.uk

HAMPTONS
INTERNATIONAL

Beyond your expectations