



Beaucterc Road London W6

£2,000 Per Week - Available 14/02/2017

HAMPTONS
INTERNATIONAL

Beyond your expectations

A fantastic four double bedroom house conveniently located near the sought after Brackenbury Village boasting over 2300 sq ft of space, wooden flooring, high ceilings & excellent location.

Four Double Bedrooms | Two Bathrooms | Excellent Living Space | Eat-in Kitchen | Utility Room | Fully Furnished | Gas Cooking | Cloakroom | Low Maintenance Rear Garden | Permit Parking | Available for Long Lets & Short Lets.

Description

A fantastic four double bedroom house conveniently located near the sought after Brackenbury Village boasting over 2300 sq ft of space, wooden flooring, high ceilings & excellent location. The property comprises spacious and bright reception room with fireplace and bay window, beautiful eat in kitchen with bespoke cupboards and access onto the garden, four well proportioned double bedrooms, a glorious family bathroom and a separate shower room with WC. The property further offers a basement utility room and separate cloakroom. Beaucterc Road is fantastically located for the transport links of Hammersmith tube station and the A4/M4 and the local amenities of the Broadway is close by.

Furnishing

Furnished

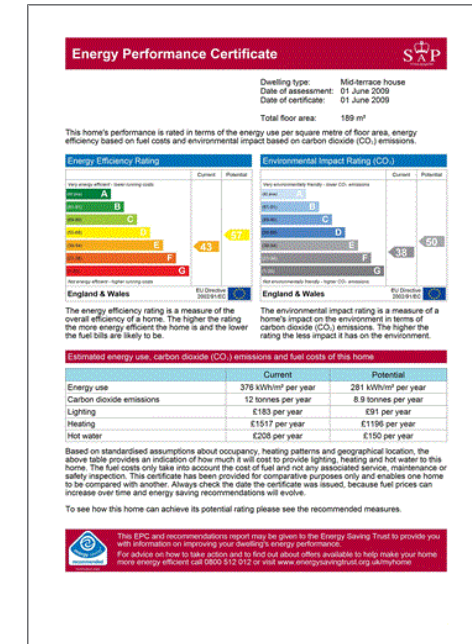
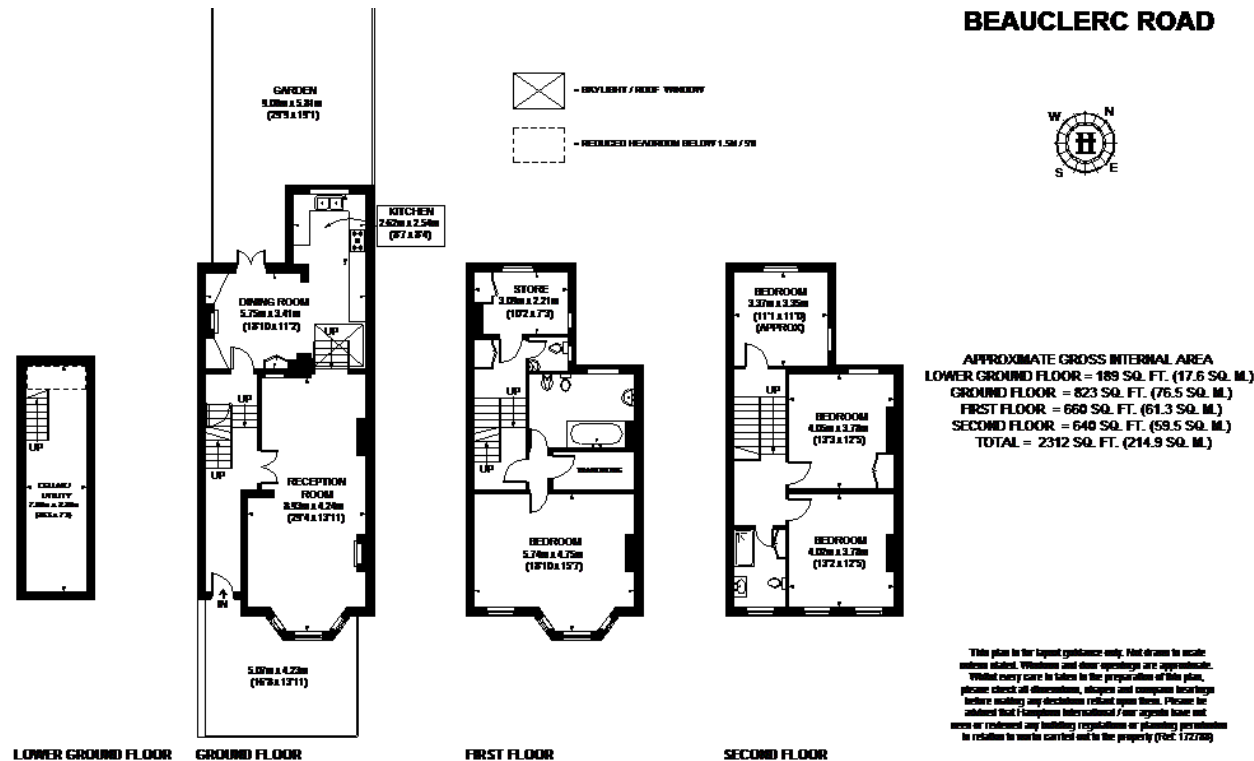


Hamptons Chiswick Lettings

48 Turnham Green Terrace, Chiswick
London W4 1QP

Tel: 0208 987 8443 - chiswicklettings@hamptons-int.com

www.hamptons.co.uk



For clarification, we wish to inform prospective purchasers that we have prepared these sales particulars as a general guide. We have not verified permissions, nor carried out a survey, tested the services, appliances and specific fittings. Room sizes are approximate and rounded: they are taken between internal wall surfaces and therefore include cupboards/shelves, etc. Accordingly, they should not be relied upon for carpets and furnishings. It should also be noted that all fixtures and fittings, carpeted, curtains/blinds, kitchen equipment and garden statuary, whether fitted or not, are deemed removable by the vendor unless specifically itemised with these particulars.