



Windsor Road Datchet SL3

£3,500 Per Month - Available Now

HAMPTONS
INTERNATIONAL

Beyond your expectations

Windsor Road Datchet SL3

£3,500 Per Month - Available Now

HAMPTONS
INTERNATIONAL

A wonderful detached house which has been extended to provide excellent accommodation. Located close to the Historic village centre of Datchet and main line station

5 Bedrooms | 3 Reception Rooms | 3 Bathrooms | Close to the village centre | Close to the main line station | Arranged over three floors.

Description

A wonderful detached house which has been extended to provide excellent accommodation. Located close to the Historic village centre of Datchet and main line station

the M25, in turn providing access to the M40 and M3.

Furnishing

Unfurnished

Situation

Riverbank Lodge is situated only a few minutes' walk from Datchet which offers a good range of shops catering for day-to-day needs. Further shopping and leisure amenities may be found in Windsor and Slough, both approximately 2 miles distant. There is a South West Trains rail link from Datchet to London (Waterloo), and London (Paddington) may be accessed via Slough. Road connections are good with Junction 5 of the M4 being approximately 2 miles away and providing access to Heathrow Airport, Central London and



Datchet fpz162247 (9)



Datchet fpz162247 (7)

Hamptons Windsor Lettings

52 High Street

Windsor SL4 1LS

Tel: 01753 867800 - windsorlettings@hamptons-int.com

www.hamptons.co.uk

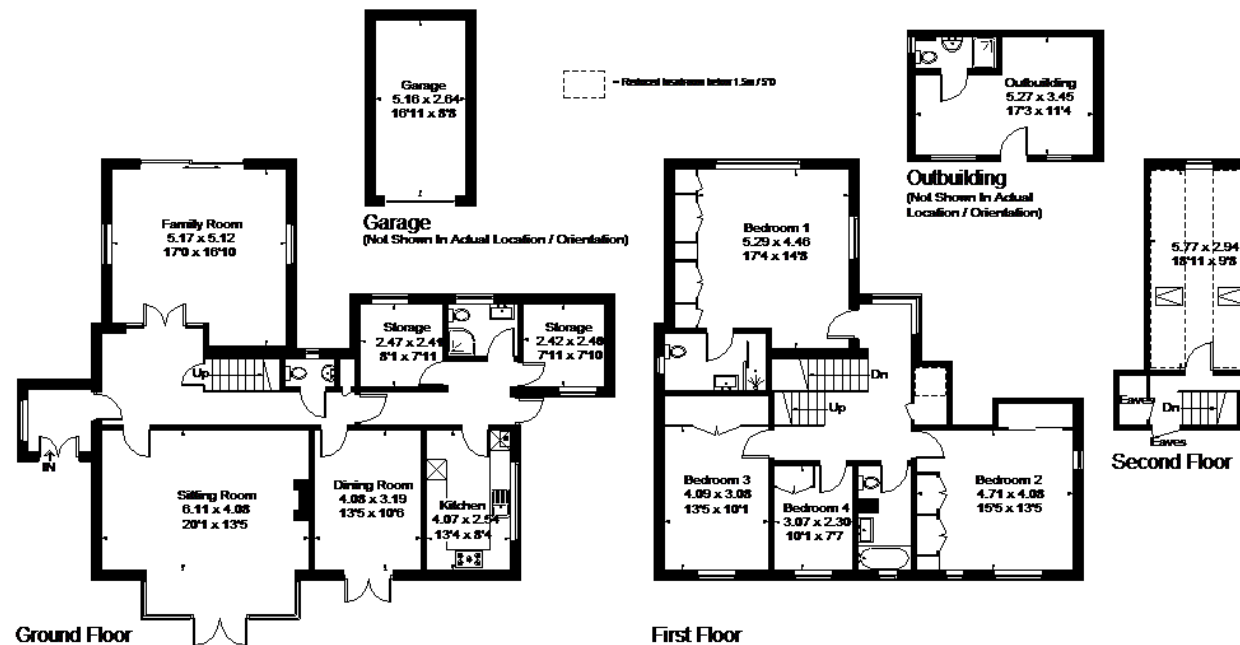
Windsor Road, Datchet, Slough

Approximate Gross Internal Area = 248.6 sq m / 2676 sq ft
(Excluding Eaves)

Garage = 13.6 sq m / 146 sq ft

Outbuilding = 18.1 sq m / 195 sq ft

Total = 280.3 sq m / 3017 sq ft



Currently not available

FLOORPLANZ © 2016 0845 6344080 Ref: 162247

This plan is for layout guidance only. Drawn in accordance with RICS guidelines. Not drawn to scale unless stated. Windows & door openings are approximate. Whilst every care is taken in the preparation of this plan, please check all dimensions, shapes & compass bearings before making any decisions reliant upon them.

For clarification, we wish to inform prospective purchasers that we have prepared these sales particulars as a general guide. We have not verified permissions, nor carried out a survey, tested the services, appliances and specific fittings. Room sizes are approximate and rounded: they are taken between internal wall surfaces and therefore include cupboards/shelves, etc. Accordingly, they should not be relied upon for carpets and furnishings. It should also be noted that all fixtures and fittings, carpeted, curtains/blinds, kitchen equipment and garden statuary, whether fitted or not, are deemed removable by the vendor unless specifically itemised with these particulars.

Hamptons Windsor Lettings

52 High Street

Windsor SL4 1LS

Tel: 01753 867800 - windsorlettings@hamptons-int.com

www.hamptons.co.uk

HAMPTONS
INTERNATIONAL

Beyond your expectations