



Premium

Equestrian

Oakley Green Road Oakley Green SL4

£6,500 Per Month - Available Now

HAMPTONS
INTERNATIONAL

Beyond your expectations

Oakley Green Road Oakley Green SL4

£6,500 Per Month - Available Now

HAMPTONS
INTERNATIONAL

A stunning and picturesque combination of a detached farmhouse style with a modern interior, this detached property is set in 7 acres and has many additional facilities

Description

SHORT LET A stunning and picturesque combination of a detached farmhouse style with a modern interior, this detached property is set in 7 acres and has many additional facilities, including indoor swimming pool with changing room and hot tub, all weather tennis court , 4 stables and tack room, schooling area, three garages, golf practise facility and multiple parking.

Situation

Enjoying a semi rural location, Oakley Cottage is nevertheless conveniently situated for access to local shopping, catering for day to day needs. Windsor is approximately 3 miles away and has an extensive selection of shops, banks, restaurants and leisure facilities. The area is well served with travel connections via rail from

Windsor to London Waterloo and to Paddington from Slough, together with access to Heathrow and the national motorway network at Junction 6 on the M4. Well known for an excellent selection of educational establishments in both the state and private sectors, schools include the Brigidine School, Upton House and Eton College.

Furnishing

Unfurnished



Oakley Cottage fpz168572 (26)



Oakley Cottage fpz168572 (21)

Hamptons Windsor Lettings

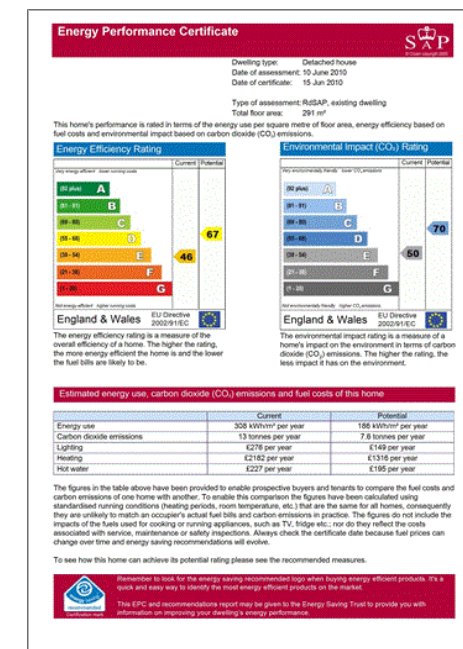
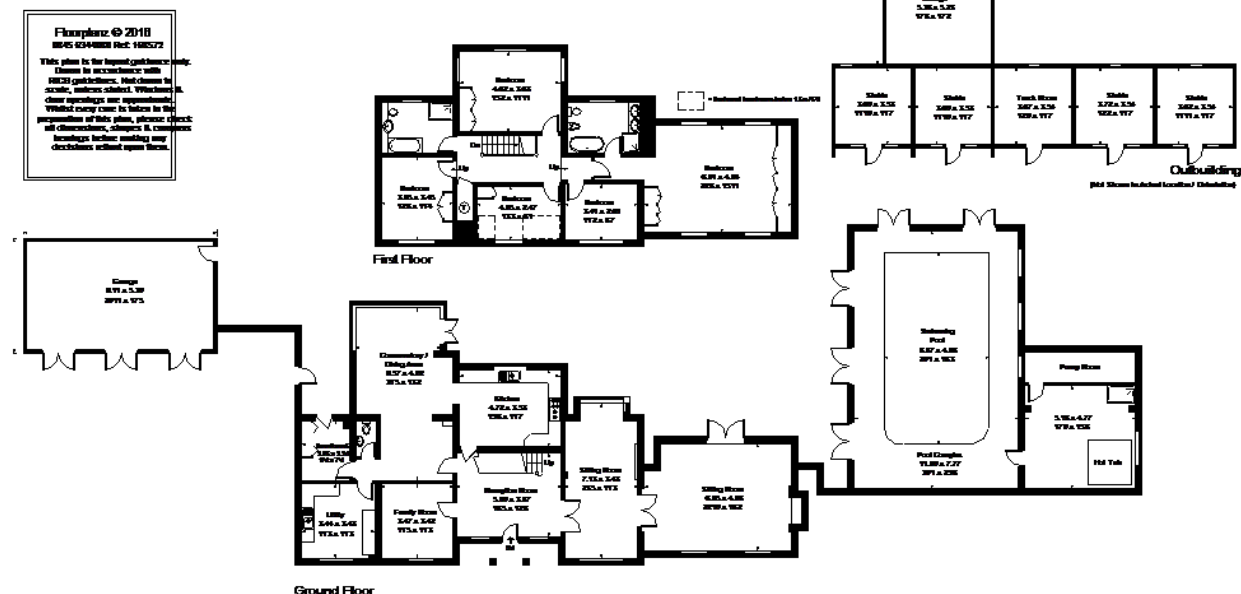
52 High Street

Windsor SL4 1LS

Tel: 01753 867800 - windsorlettings@hamptons-int.com

www.hamptons.co.uk

Oakley Green Road, Oakley Green, Windsor



For clarification, we wish to inform prospective purchasers that we have prepared these sales particulars as a general guide. We have not verified permissions, nor carried out a survey, tested the services, appliances and specific fittings. Room sizes are approximate and rounded: they are taken between internal wall surfaces and therefore include cupboards/shelves, etc. Accordingly, they should not be relied upon for carpets and furnishings. It should also be noted that all fixtures and fittings, carpeted, curtains/blinds, kitchen equipment and garden statuary, whether fitted or not, are deemed removable by the vendor unless specifically itemised with these particulars.