



Coningsby Lane Fifield SL6

£2,500 Per Month - Available Now

HAMPTONS
INTERNATIONAL

Beyond your expectations

A stunning and picturesque period barn conversion (Grade II Listed), steeped in history, with period features dating back 400 years.

Grade II Listed | Barn Conversion | Rural Village Location | Two garages.

Description

Steeped in history, featuring 400 year old beams, this property has been sympathetically converted including natural limestone flooring to provide impressive accommodation throughout. Offering 4 bedrooms, 3 reception family property with two outbuildings/garages and superb garden, one of just five in this rural village location. A beautiful beamed sitting room with inglenook fireplace sits open plan to the dining room with French doors to the garden. A contemporary kitchen overlooking the garden is superbly appointed with granite work surfaces and includes an integrated dishwasher and walk in pantry. In addition, steps lead down to a separate utility room with additional sink, built in storage. A family room/study and a bathroom complete the arrangement for the ground floor. With generous

eaves storage, first floor accommodation comprises, four bedrooms, including a beamed master bedroom with magnificent vaulted ceiling, built in wardrobes, juliet balcony and en suite bathroom. Of note, bedrooms two and three include built in wardrobes whilst bedroom four enjoys stunning views of the gardens beyond through french doors and juliet balcony.

Furnishing

Unfurnished



Middle Barton fpz162383 (10)



Middle Barton fpz 165945 (9)

Hamptons Windsor Lettings

52 High Street

Windsor SL4 1LS

Tel: 01753 867800 - windsorlettings@hamptons-int.com

www.hamptons.co.uk

Floorplan

Energy Performance Certificate (EPC)

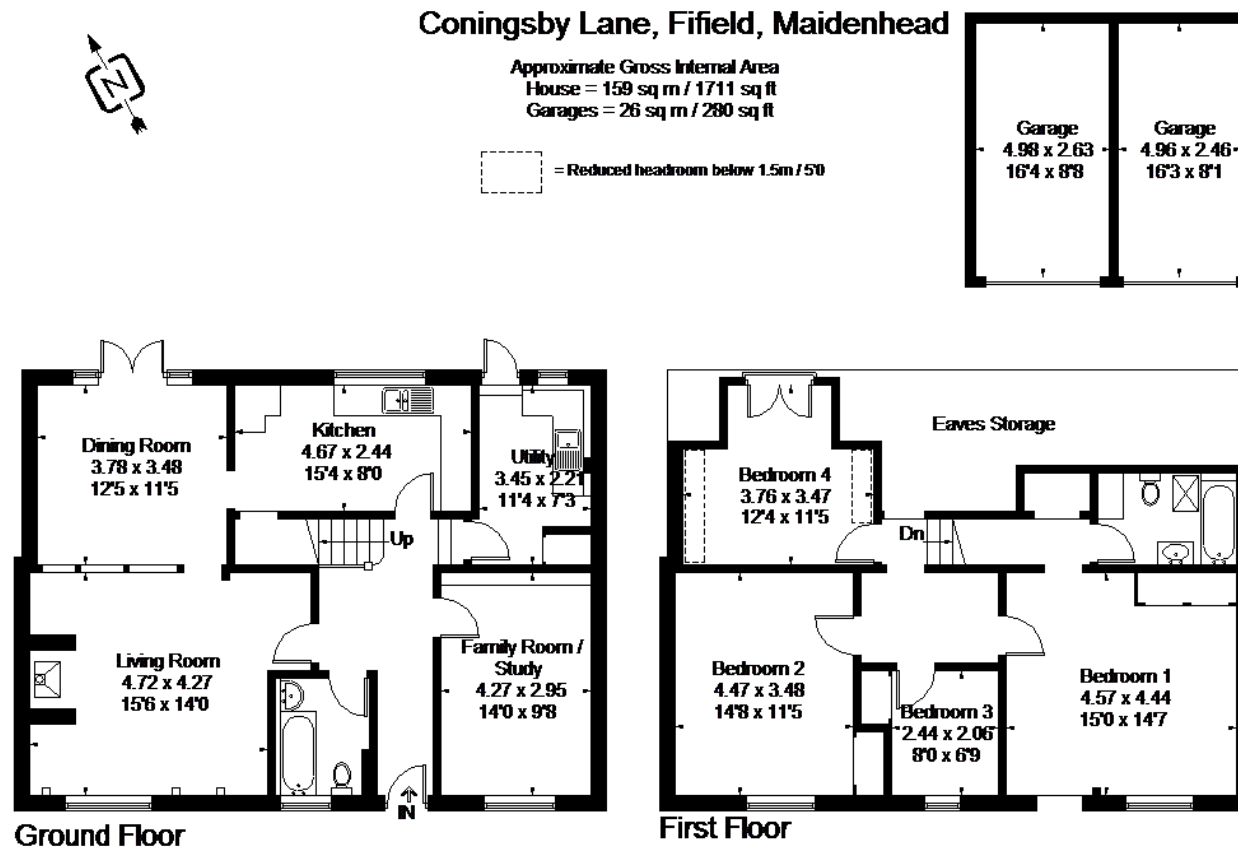
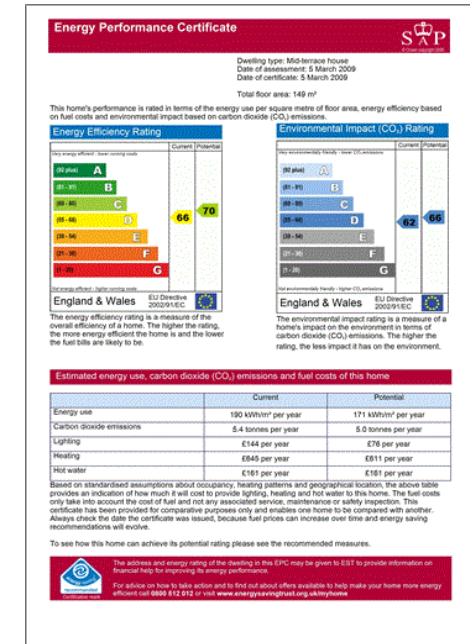


Illustration for identification purposes only. Not to scale
Ref: 163391



For clarification, we wish to inform prospective purchasers that we have prepared these sales particulars as a general guide. We have not verified permissions, nor carried out a survey, tested the services, appliances and specific fittings. Room sizes are approximate and rounded: they are taken between internal wall surfaces and therefore include cupboards/shelves, etc. Accordingly, they should not be relied upon for carpets and furnishings. It should also be noted that all fixtures and fittings, carpeted, curtains/blinds, kitchen equipment and garden statuary, whether fitted or not, are deemed removable by the vendor unless specifically itemised with these particulars.

Hamptons Windsor Lettings

52 High Street

Windsor SL4 1LS

Tel: 01753 867800 - windsorlettings@hamptons-int.com

www.hamptons.co.uk

HAMPTONS
INTERNATIONAL

Beyond your expectations