



Furnival Street EC4A, EPC:D

£450 Per Week - Available Now

HAMPTONS
INTERNATIONAL

Beyond your expectations

Newly refurbished one bedroom duplex apartment located moments from Holborn and Fleet Street on the edge of the City of London. Benefits from a full repaint and newly laid wood flooring throughout, new kitchen appliances and modern bathroom. A small private courtyard is off the lounge. The bars, restaurants and nightlife of Farringdon and Covent Garden are both a short walk away.

Description

Newly refurbished one bedroom duplex apartment located moments from Holborn and Fleet Street on the edge of the City of London. Benefits from a full repaint and newly laid wood flooring throughout, new kitchen appliances and modern bathroom. A small private courtyard is off the lounge. The bars, restaurants and nightlife of Farringdon and Covent Garden are both a short walk away. Transport links are superb with Chancery Lane and Farringdon underground Stations close by for Central and Circle Line access.

Furnishing

Furnished



Hamptons City Lettings

Aldermay House 15 Queen Street

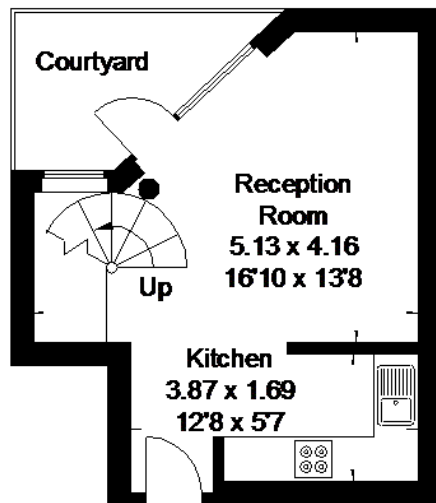
London EC4N 1TX

Tel: 020 7236 8399 - citylettings@hamptons-int.com

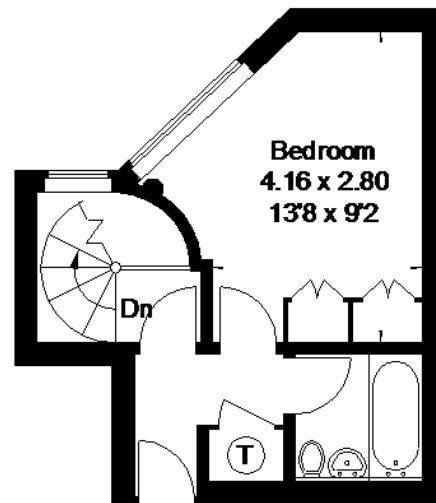
www.hamptons.co.uk

Furnival Street

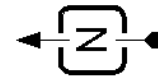
Approximate Gross Internal Area
47 sq m / 506 sq ft



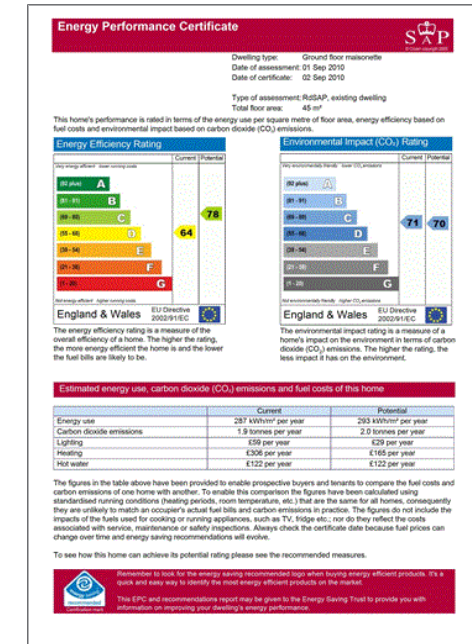
Lower
Ground Floor



Ground Floor



Floorplans © 2014
0645 6344000 Ref: 134742
This plan is for layout guidance only.
Drawn in accordance with
RICS guidelines. Not drawn to
scale, unless stated. Windows &
door openings are approximate.
Whilst every care is taken in the
preparation of this plan, please check
all dimensions, shapes & compass
bearings before making any
decisions relied upon them.



For clarification, we wish to inform prospective purchasers that we have prepared these sales particulars as a general guide. We have not verified permissions, nor carried out a survey, tested the services, appliances and specific fittings. Room sizes are approximate and rounded: they are taken between internal wall surfaces and therefore include cupboards/shelves, etc. Accordingly, they should not be relied upon for carpets and furnishings. It should also be noted that all fixtures and fittings, carpeted, curtains/blinds, kitchen equipment and garden statuary, whether fitted or not, are deemed removable by the vendor unless specifically itemised with these particulars.

Hamptons City Lettings

Aldermay House 15 Queen Street

London EC4N 1TX

Tel: 020 7236 8399 - citylettings@hamptons-int.com

www.hamptons.co.uk

HAMPTONS
INTERNATIONAL

Beyond your expectations