



Premium

Wood Street, EC2

£750 Per Week - Available 10/11/2016

HAMPTONS
INTERNATIONAL

Beyond your expectations

Stunning brand new two bedroom apartment superbly located in the heart of the City of London in this flagship high specification residential conversion. Benefits from 24 hour concierge and communal gym.

Brand new apartment | High Specification | 24 hour concierge | Residents Gym | Close to Tube.

Description

Stunning brand new two bedroom apartment superbly located in the heart of the City of London in this flagship high specification residential conversion. Benefits from 24 hour concierge and communal gym. Wood Street is located in the midst of historic London, moments from Roman Wall remains. Transport links are superb with Moorgate, Barbican and St Pauls all close by.

Furnishing

Furnished



Hamptons City Lettings

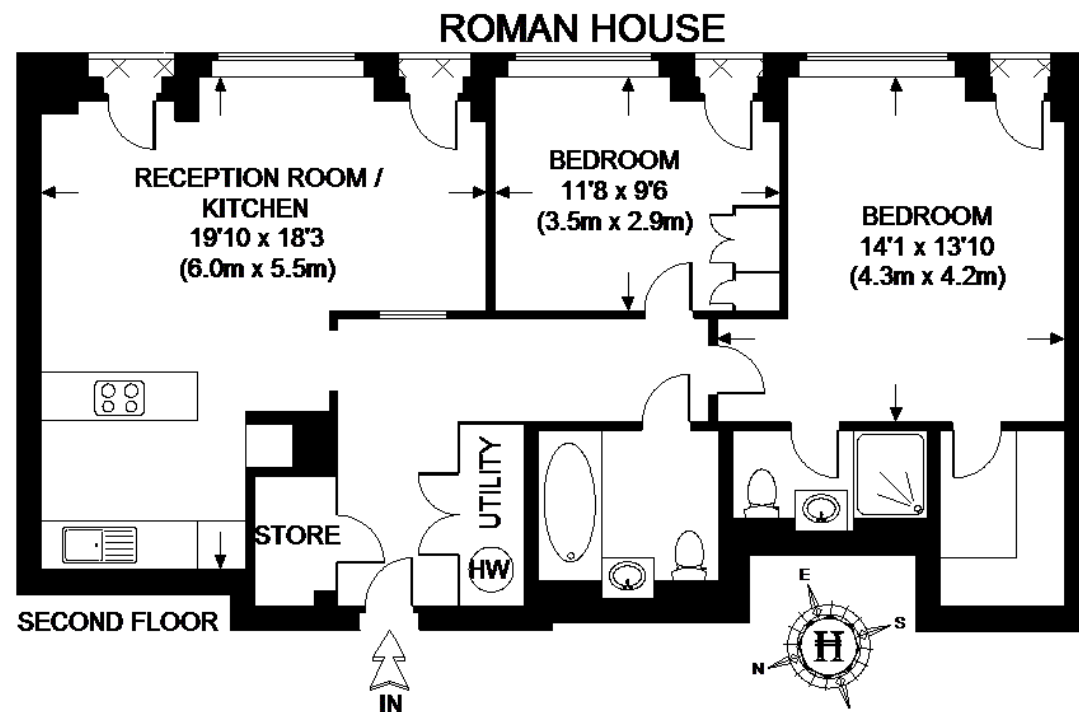
Aldermay House 15 Queen Street

London EC4N 1TX

Tel: 020 7236 8399 - citylettings@hamptons-int.com

www.hamptons.co.uk

Floorplan

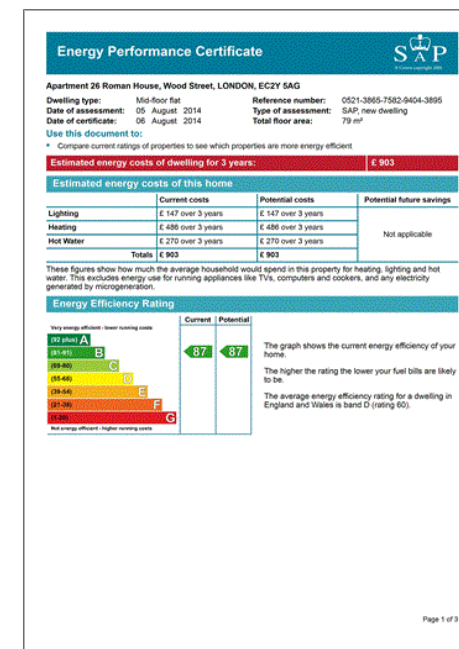


**APPROXIMATE GROSS INTERNAL AREA =
TOTAL = 820 SQ. FT. (76.2 SQ. M.)**

This plan is for layout guidance only. Not drawn to scale unless stated. Windows & door openings are approximate. Whilst every care is taken in the preparation of this plan, please check all dimensions, shapes & compass bearings before making any decisions reliant upon them. Please be advised that Hamptons International / our agents have not seen or reviewed any building regulations or planning permission in relation to works carried out to the property.

For clarification, we wish to inform prospective purchasers that we have prepared these sales particulars as a general guide. We have not verified permissions, nor carried out a survey, tested the services, appliances and specific fittings. Room sizes are approximate and rounded: they are taken between internal wall surfaces and therefore include cupboards/shelves, etc. Accordingly, they should not be relied upon for carpets and furnishings. It should also be noted that all fixtures and fittings, carpeted, curtains/blinds, kitchen equipment and garden statuary, whether fitted or not, are deemed removable by the vendor unless specifically itemised with these particulars.

Energy Performance Certificate (EPC)



Hamptons City Lettings

Aldermay House 15 Queen Street

London EC4N 1TX

Tel: 020 7236 8399 - citylettings@hamptons-int.com

www.hamptons.co.uk

HAMPTONS
INTERNATIONAL

Beyond your expectations