



Moor Lane London EC2Y

£1,000 Per Week - Available 29/04/2016

HAMPTONS
INTERNATIONAL

Beyond your expectations

Stunning two bedroom apartment in the iconic luxury Heron development in the City of London, moments from Barbican and Moorgate.

Luxury Living | Residents Gym | Residents Cinema | 24 hour Concierge | Balcony | Two bedrooms | Close to Tube | City Location.

Description

Stunning two bedroom apartment in the iconic luxury Heron development in the City of London, moments from Barbican and Moorgate. This apartment offers high quality finish throughout, balcony, 24 hour concierge, two bathrooms, residents gym, restaurants, bar and cinema and communal roof garden, offering the ultimate in City living. This development is superbly located for transport with Barbican and Moorgate Stations located close by. The nightlife, restaurants and shops of Farringdon, Clerkenwell and Shoreditch are all within easy reach.

Furnishing

Furnished



Hamptons City Lettings

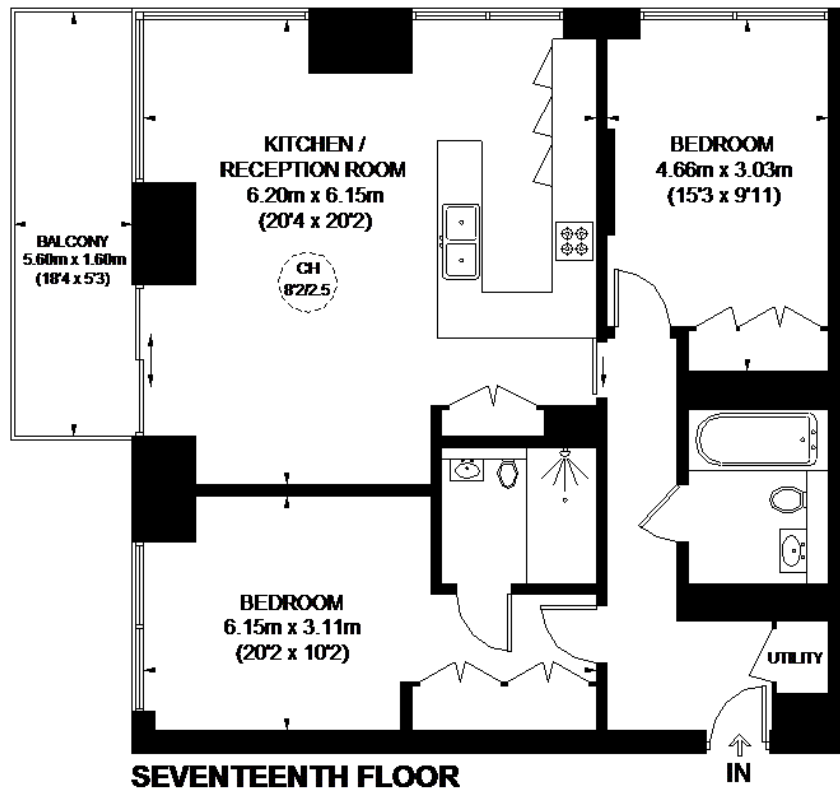
Aldermay House 15 Queen Street

London EC4N 1TX

Tel: 020 7236 8399 - citylettings@hamptons-int.com

www.hamptons.co.uk

Floorplan



HERON MOOR LANE

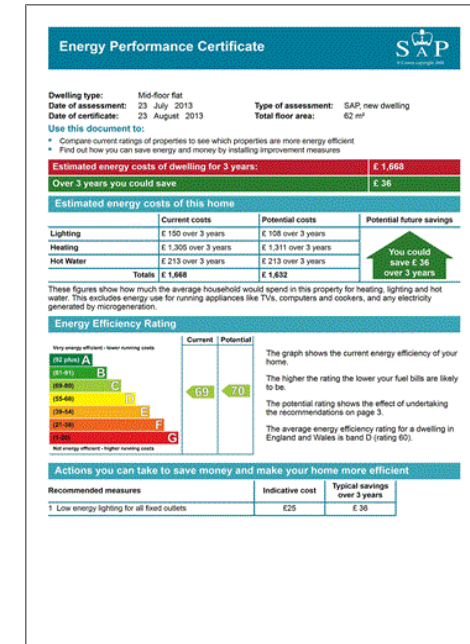


CEILING HEIGHT

APPROXIMATE GROSS INTERNAL AREA
SEVENTEENTH FLOOR
942 SQ. FT. (87.5 SQ. M.)

This plan is for layout guidance only. Not drawn to scale unless stated. Windows and door openings are approximate. Whilst every care is taken in the preparation of this plan, please check all dimensions, shapes and complete bearings before making any decisions reliant upon them. Please be advised that Hamptons International / our agents have not seen or retained any building regulations or planning permission in relation to works carried out to the property (01247524).

Energy Performance Certificate (EPC)



For clarification, we wish to inform prospective purchasers that we have prepared these sales particulars as a general guide. We have not verified permissions, nor carried out a survey, tested the services, appliances and specific fittings. Room sizes are approximate and rounded: they are taken between internal wall surfaces and therefore include cupboards/shelves, etc. Accordingly, they should not be relied upon for carpets and furnishings. It should also be noted that all fixtures and fittings, carpeted, curtains/blinds, kitchen equipment and garden statuary, whether fitted or not, are deemed removable by the vendor unless specifically itemised with these particulars.

Hamptons City Lettings

Aldermay House 15 Queen Street

London EC4N 1TX

Tel: 020 7236 8399 - citylettings@hamptons-int.com

www.hamptons.co.uk

HAMPTONS
INTERNATIONAL

Beyond your expectations