



Kingsway WC2B, EPC:C

£1,350 Per Week - Available Now

HAMPTONS
INTERNATIONAL

Beyond your expectations

A brand new high specification three bedroom apartment in this landmark development, superbly located in Covent Garden. This 7th floor apartment benefits from underfloor heating, air conditioning, lift and daytime concierge. The bars, restaurants, theatres and vibrant nightlife of Covent Garden are moments away.

Three Bedrooms | Two Bathrooms | Concierge | Lift | High Specification | Close to Transport.

Description

A brand new high specification three bedroom apartment in this landmark development, superbly located in Covent Garden. This 7th floor apartment benefits from underfloor heating, air conditioning, lift and daytime concierge. The bars, restaurants, theatres and vibrant nightlife of Covent Garden and the West End are moments away. Transport links are superb with Holborn and Temple underground stations both close by. The City of London is also a short walk away.

Furnishing

Furnished



Hamptons City Lettings

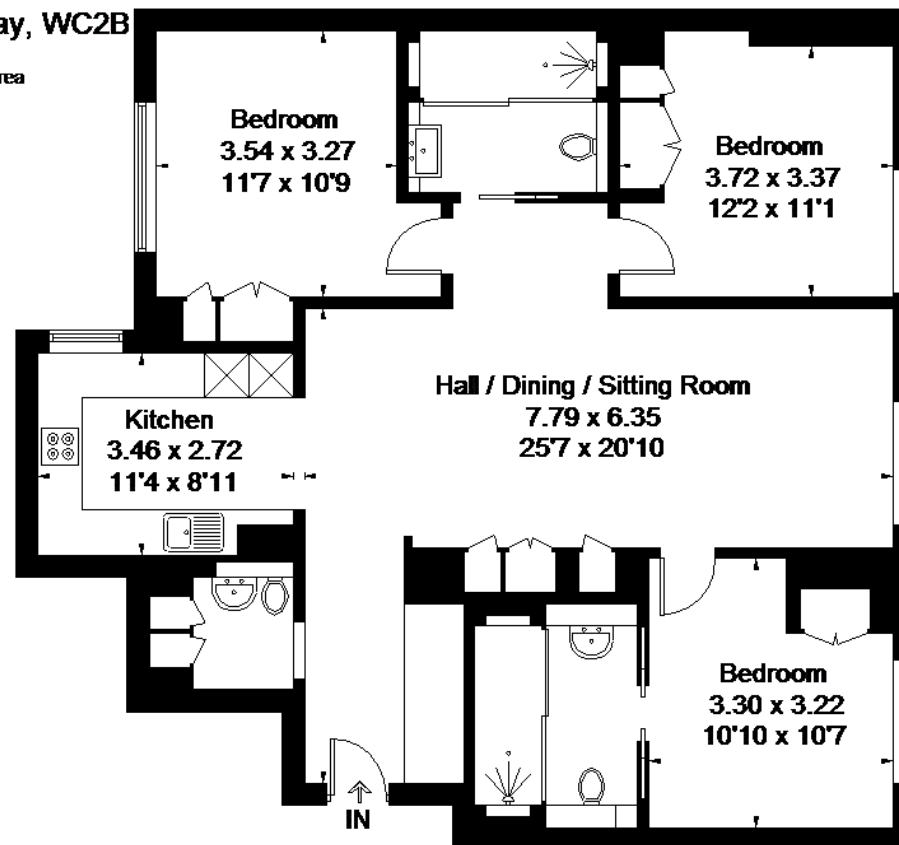
Aldermay House 15 Queen Street
London EC4N 1TX
Tel: 020 7236 8399 - citylettings@hamptons-int.com
www.hamptons.co.uk

Floorplan

Energy Performance Certificate (EPC)

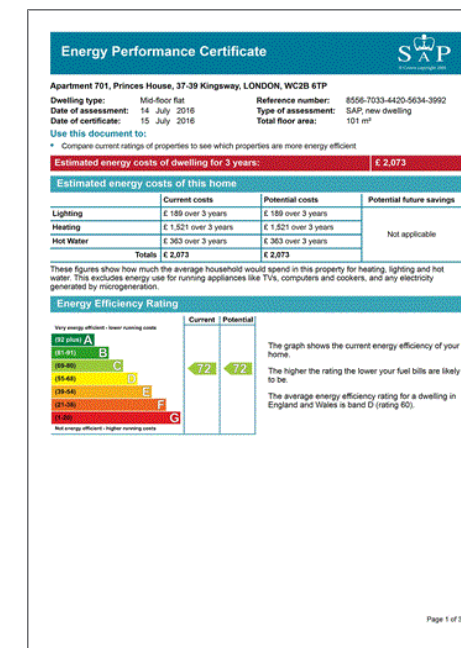
Princes House, Kingsway, WC2B

Approximate Gross Internal Area
105.3 sq m / 1133 sq ft



Ground Floor

Floorplans © 2016
0845 6344080 Ref: 174524
This plan is for layout guidance only.
Drawn in accordance with
RICS guidelines. Not drawn to
scale, unless stated. Windows &
door openings are approximate.
Whilst every care is taken in the
preparation of this plan, please check
all dimensions, shapes & compass
bearings before making any
decisions reliant upon them.



For clarification, we wish to inform prospective purchasers that we have prepared these sales particulars as a general guide. We have not verified permissions, nor carried out a survey, tested the services, appliances and specific fittings. Room sizes are approximate and rounded: they are taken between internal wall surfaces and therefore include cupboards/shelves, etc. Accordingly, they should not be relied upon for carpets and furnishings. It should also be noted that all fixtures and fittings, carpeted, curtains/blinds, kitchen equipment and garden statuary, whether fitted or not, are deemed removable by the vendor unless specifically itemised with these particulars.

Hamptons City Lettings

Aldermay House 15 Queen Street

London EC4N 1TX

Tel: 020 7236 8399 - citylettings@hamptons-int.com

www.hamptons.co.uk

HAMPTONS
INTERNATIONAL

Beyond your expectations