



Royal Crescent Mews London W11

£1,200 Per Week - Available 29/08/2017

HAMPTONS
INTERNATIONAL

Beyond your expectations

Royal Crescent Mews London W11

£1,200 Per Week - Available 29/08/2017

HAMPTONS
INTERNATIONAL

Meticulously designed three bedroom mews house, boasting contemporary interior, natural light, large open-plan reception room, patio and garage.

3 Bedrooms | 2 Bathrooms | Under Floor Heating | Dishwasher | Dryer | Elec Hob | Fridge/Freezer | Washer | Patio | Garage.

Description

Call us between our extended opening hours of 6 - 9PM Monday to Thursday to arrange an appointment. This meticulously designed, three double bedroom mews house is beautifully presented and offers flexible living and great entertaining space, complete with large open plan kitchen/reception. The master bedroom boasts a walk-in wardrobe and spacious en suite bathroom. The property comprises two further double bedrooms, modern bathroom, patio and garage. Royal Crescent Mews is perfectly located, just a short walk from the open green spaces of Holland Park and Holland Park Avenue with its vibrant shops, cafes and restaurants. The new Westfield Shopping Centre is a popular addition to the area and offers an abundance of well known shops plus a large Waitrose supermarket.

Holland Park underground station (Central line) is a short walk with direct links towards the City.

Furnishing

Furnished



Master Bedroom



Open Plan Reception

Hamptons Notting Hill Lettings

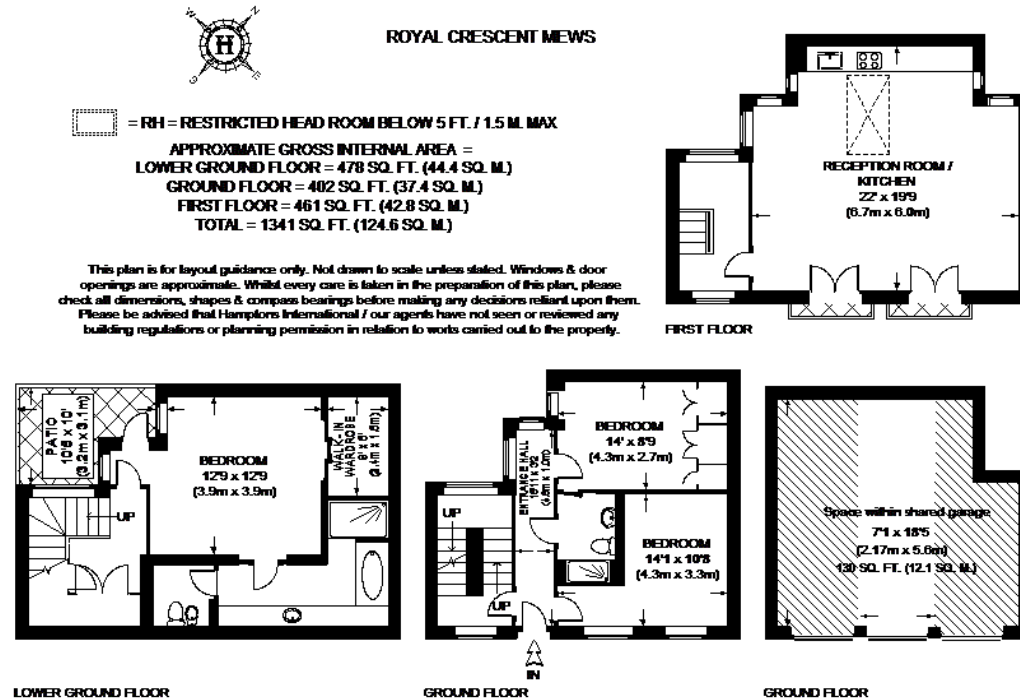
301 Westbourne Grove, Notting Hill

London W11 2QA

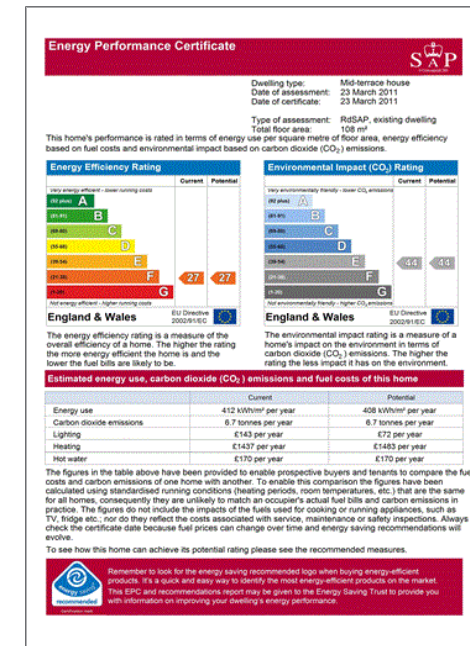
Tel: 020 7034 0405 - nottinghilllettings@hamptons-int.com

www.hamptons.co.uk

Floorplan



Energy Performance Certificate (EPC)



For clarification, we wish to inform prospective purchasers that we have prepared these sales particulars as a general guide. We have not verified permissions, nor carried out a survey, tested the services, appliances and specific fittings. Room sizes are approximate and rounded: they are taken between internal wall surfaces and therefore include cupboards/shelves, etc. Accordingly, they should not be relied upon for carpets and furnishings. It should also be noted that all fixtures and fittings, carpeted, curtains/blinds, kitchen equipment and garden statuary, whether fitted or not, are deemed removable by the vendor unless specifically itemised with these particulars.

Hamptons Notting Hill Lettings

301 Westbourne Grove, Notting Hill

London W11 2QA

Tel: 020 7034 0405 - nottinghilllettings@hamptons-int.com

www.hamptons.co.uk

HAMPTONS
INTERNATIONAL

Beyond your expectations