



Kensington Park Gardens London W11

£8,000 Per Week - Available 09/11/2015

**HAMPTONS**  
INTERNATIONAL

*Beyond your expectations*

# Kensington Park Gardens London W11

£8,000 Per Week - Available 09/11/2015

**HAMPTONS**  
INTERNATIONAL

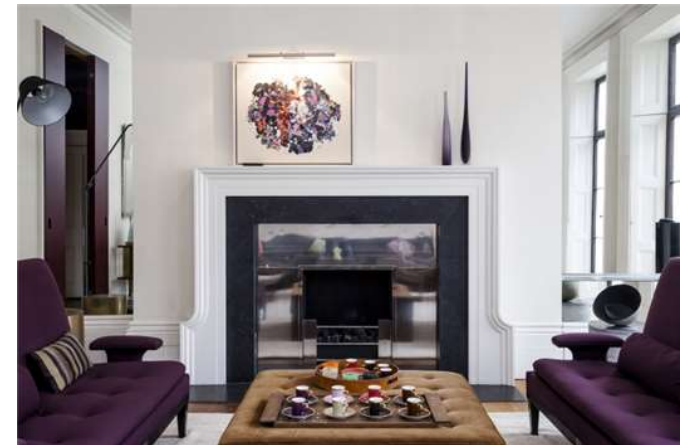
*A rare to the market exquisite family house on Kensington Park Gardens with direct access to the communal gardens and fabulous entertaining space.*

Contemporary House | Five Bedrooms | Four Bathrooms | Communal Gardens | Two Large Receptions | Exquisitely Finished | Music System.

## Description

Call us between our extended opening hours of 6 - 10PM Monday to Thursday to arrange an appointment. A contemporary town house on Kensington Park Gardens. Arranged over five floors with direct access to beautiful communal gardens and magnificently laid out with an abundance of entertaining spaces. Accommodation comprises: A bespoke family kitchen benefiting from high quality appliances perfect for both personal use and professional entertaining. Two separate large double aspect reception rooms over the raised ground floor and first floors lend themselves to family or formal entertaining with splendid high ceilings, large period windows, contemporary light fittings and impressive feature fireplaces. The master suite occupies the second floor complete with it's own

dressing room leading onto an immaculately presented large bathroom suite. The family accommodation spans over the second and third floors with three further bedrooms and two bathrooms (one en suite). To the lower ground floor there is accommodation comprising a double bedroom, bathroom and kitchen offering the perfect space for long stay guests or home help.



38-Kensington-Park-Gardens-26

## Hamptons Notting Hill Lettings

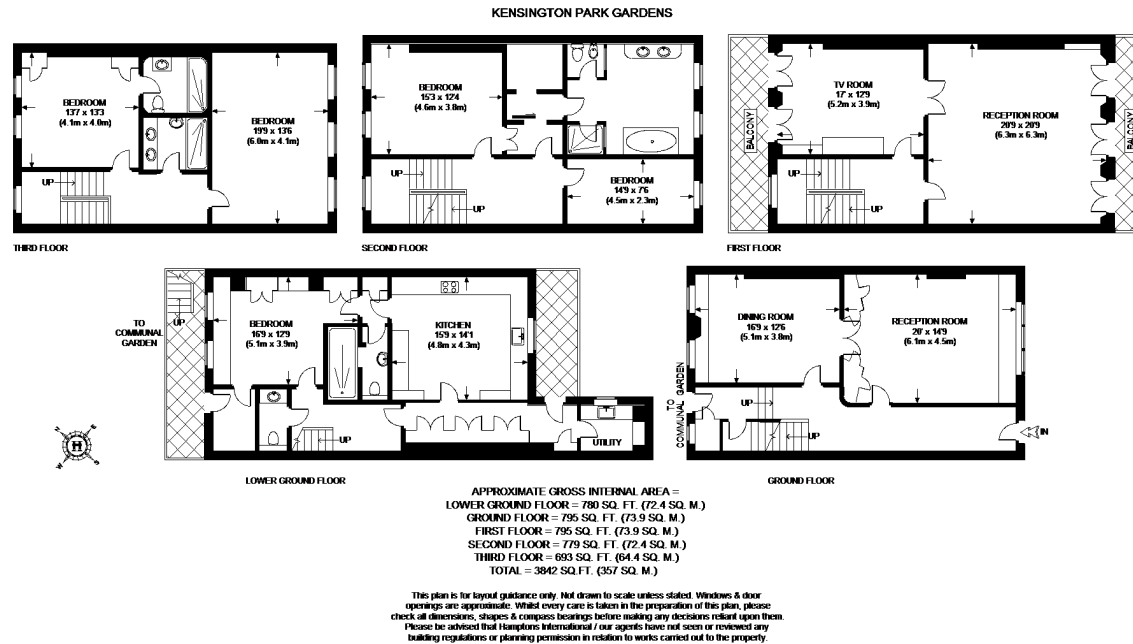
301 Westbourne Grove, Notting Hill

London W11 2QA

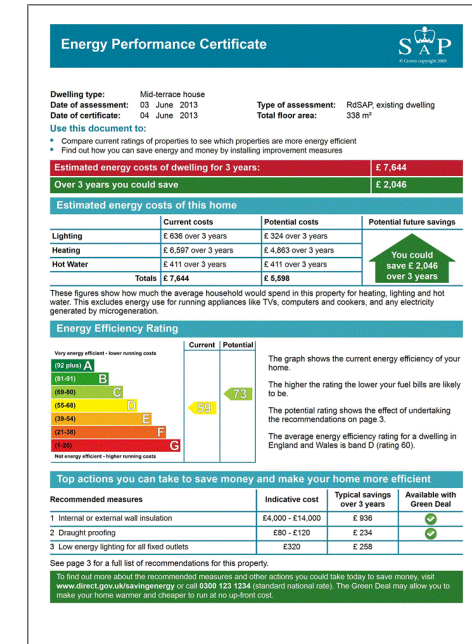
Tel: 020 7034 0405 - [nottinghilllettings@hamptons-int.com](mailto:nottinghilllettings@hamptons-int.com)

[www.hamptons.co.uk](http://www.hamptons.co.uk)

## Floorplan



## Energy Performance Certificate (EPC)



**For clarification,** we wish to inform prospective purchasers that we have prepared these sales particulars as a general guide. We have not verified permissions, nor carried out a survey, tested the services, appliances and specific fittings. Room sizes are approximate and rounded: they are taken between internal wall surfaces and therefore include cupboards/shelves, etc. Accordingly, they should not be relied upon for carpets and furnishings. It should also be noted that all fixtures and fittings, carpeted, curtains/blinds, kitchen equipment and garden statuary, whether fitted or not, are deemed removable by the vendor unless specifically itemised with these particulars.

## Hamptons Notting Hill Lettings

301 Westbourne Grove, Notting Hill

London W11 2QA

Tel: 020 7034 0405 - [nottinghilllettings@hamptons-int.com](mailto:nottinghilllettings@hamptons-int.com)

[www.hamptons.co.uk](http://www.hamptons.co.uk)

**HAMPTONS**  
INTERNATIONAL

Beyond your expectations