



Bonchurch Road London W10

£465 Per Week - Available 10/10/2016

**HAMPTONS**  
INTERNATIONAL

*Beyond your expectations*

*BRAND NEW! Rare opportunity to live in a brand new apartment in new build scheme off Portobello Road. The double bedroom top floor apartment benefits from two balcony's.*

BRAND NEW! | 1 Double Bedroom Apartment | Wood Floors | Under Floor Heating | Two Balcony's | Lift | Good Storage.

### Description

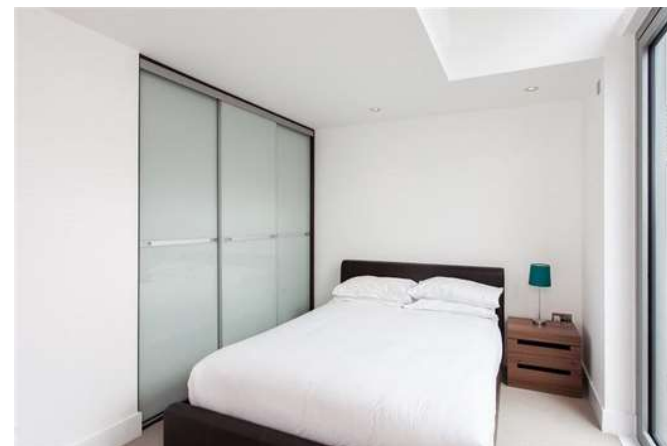
BRAND NEW! Rare opportunity to live in a brand new apartment in new build scheme off Portobello Road. The double bedroom top floor apartment benefits from well appointed interiors including; wood floors, modern bathrooms and kitchens with the latest appliances and two balconies / terraces. The apartment benefits from underfloor heating.

### Situation

Portobello Square enjoys an enviable location close to the hustle and bustle of Portobello Road and Goldborne Road. The nearest Tube station is Ladbroke Grove for the Hammersmith and City and Circle lines into the city.

### Furnishing

Furnished



Master Bedroom



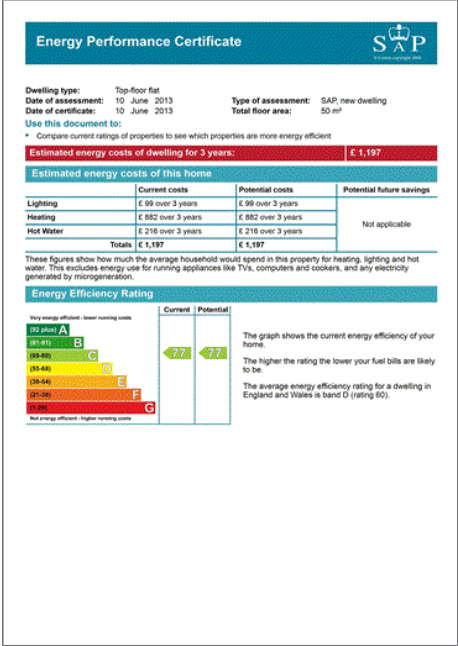
Reception

### Hamptons Notting Hill Lettings

301 Westbourne Grove, Notting Hill  
London W11 2QA

Tel: 020 7034 0405 - [nottinghilllettings@hamptons-int.com](mailto:nottinghilllettings@hamptons-int.com)

[www.hamptons.co.uk](http://www.hamptons.co.uk)



**For clarification,** we wish to inform prospective purchasers that we have prepared these sales particulars as a general guide. We have not verified permissions, nor carried out a survey, tested the services, appliances and specific fittings. Room sizes are approximate and rounded: they are taken between internal wall surfaces and therefore include cupboards/shelves, etc. Accordingly, they should not be relied upon for carpets and furnishings. It should also be noted that all fixtures and fittings, carpeted, curtains/blinds, kitchen equipment and garden statuary, whether fitted or not, are deemed removable by the vendor unless specifically itemised with these particulars.