



Premium

Junction Road London N19

£465 Per Week - Available 05/10/2016

HAMPTONS
INTERNATIONAL

Beyond your expectations

Vantage Point is an iconic London landmark situated on the corner of Highgate Hill above Archway Tube station that features 118 stunning apartments for rent along with a spectacular range of shared social spaces, free for all residents to enjoy.

Styled by top interior designers | Stunning shared penthouse social space | No tenant fees | Transparent contracts | Heating, water and electricity included | 45Mbps building-wide WiFi included | Panoramic views of London | 24-hour residents' team | Responsive maintenance | 1-minute walk to Archway Underground station.

Description

Vantage Point is an iconic London landmark in Islington that features 118 stunning apartments for rent, ample shared social spaces and a spectacular panoramic view of London. Essential Living's architects and interior designers have created uniquely-designed, fully-furnished apartments with a strong emphasis on quality and style – from spacious suites to stylish 1- and 2-bed apartments. Vantage Point's unique 16th and 17th floor penthouse has been converted into a range of shared social spaces free for all residents to enjoy, including a luxurious lounge area filled with designer furniture and large screens, a stylish dining room available for private hire, an activity room with exercise mats and free weights, a games room with pool table and games consoles, and a spacious rooftop

garden terrace with a barbecue, wood-fired pizza oven and outstanding views. The development is situated in a well-connected location on top of Archway Tube station in Zone 2, giving residents access to the bustling borough of Islington as well as a short 15-minute commute to the West End on the Northern Line. Vantage Point also comes equipped with its very own 24-hour residents' team, who are on-hand to help with any issue – whether big or small.

Situation

Vantage Point is located next to Archway Underground station. Travel Times: 14 minutes to Oxford Circus / 18 minutes to Bank / 33 minutes to Canary Wharf



Overview



Living Room/Dining Area

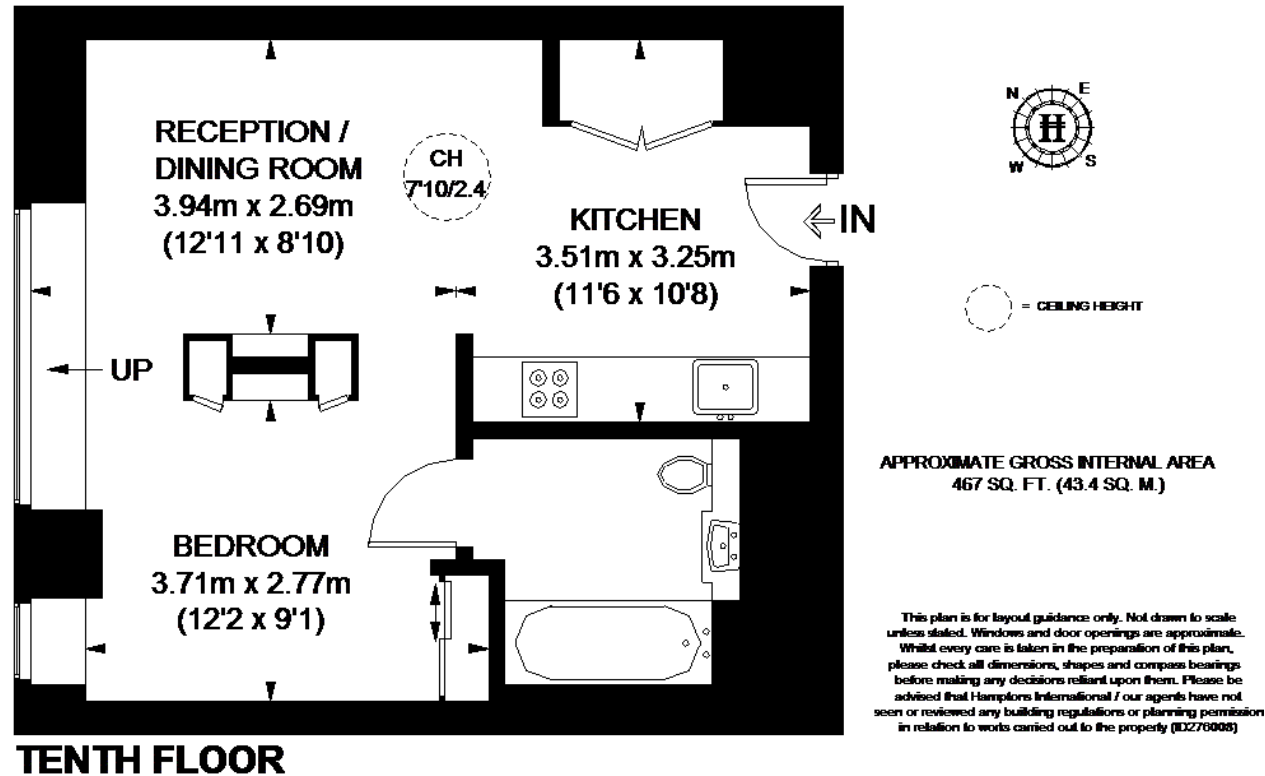
Hamptons Hamptons International New Homes Lettings

7th Floor United Kingdom House 180 Oxford Street
London W1D 1NN

Tel: +44 (0) 20 3451 1532 - newhomeslettings@hamptons-int.com

www.hamptons.co.uk

VANTAGE POINT



Currently not available

For clarification, we wish to inform prospective purchasers that we have prepared these sales particulars as a general guide. We have not verified permissions, nor carried out a survey, tested the services, appliances and specific fittings. Room sizes are approximate and rounded: they are taken between internal wall surfaces and therefore include cupboards/shelves, etc. Accordingly, they should not be relied upon for carpets and furnishings. It should also be noted that all fixtures and fittings, carpeted, curtains/blinds, kitchen equipment and garden statuary, whether fitted or not, are deemed removable by the vendor unless specifically itemised with these particulars.

Hamptons Hamptons International New Homes Lettings

7th Floor United Kingdom House 180 Oxford Street

London W1D 1NN

Tel: +44 (0) 20 3451 1532 - newhomeslettings@hamptons-int.com

www.hamptons.co.uk

HAMPTONS
INTERNATIONAL

Beyond your expectations