



Doods Road Reigate RH2

£1,250 Per Month - Available 21/09/2016

HAMPTONS
INTERNATIONAL

Beyond your expectations

A very well presented and recently refurbished two bedroom maisonette located in a purpose built development within easy access of Reigate Station and the town centre.

Two bedrooms | Recently refurbished | Beautiful gardens | Great location..

Description

A wonderful two bedroom property that is part of a purpose built development situated in beautiful communal gardens. The property has had recent refurbishment which includes a new kitchen, floors and redecoration throughout. The property is accessed through its own front door on the ground floor that leads up to the maisonette itself. On the first floor the spacious reception room offers views over the very well maintained communal gardens while the newly added kitchen is a pleasure to cook in. The second floor features two double bedrooms and a family bathroom.

Situation

Doods place is located within easy access to Reigate Town Centre and also Reigate train

Station. The development itself sits in some very well maintained private grounds that offer an extremely quiet location whilst allowing great access to local amenities.

Furnishing

Unfurnished



Kitchen



Bathroom

Hamptons Caterham Lettings

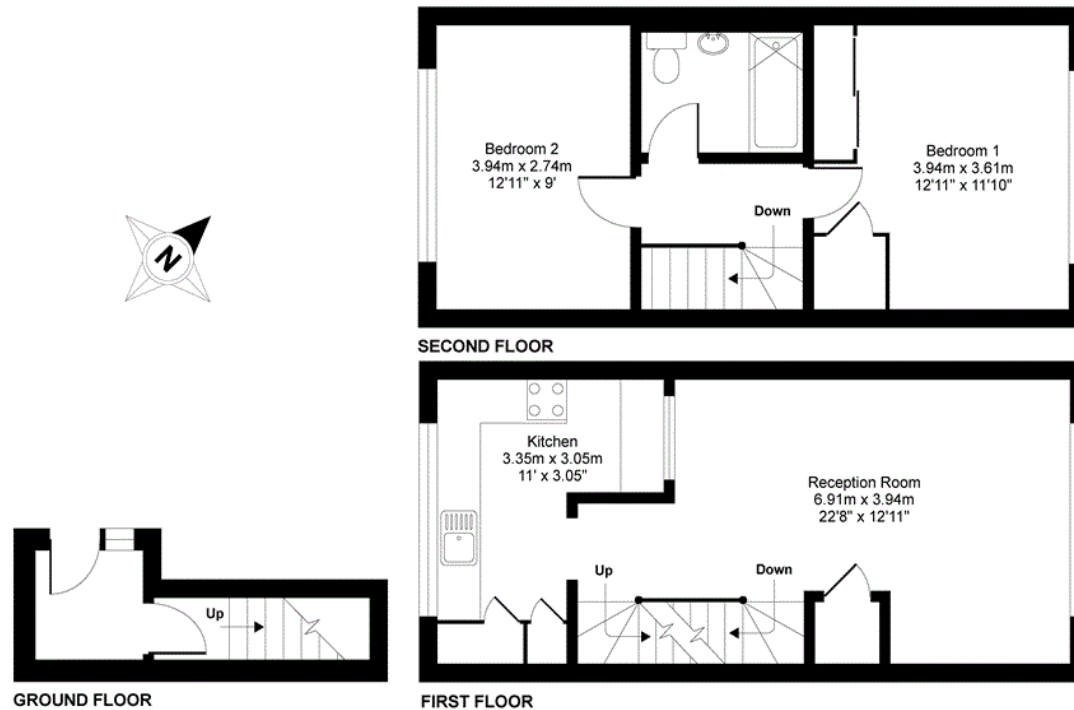
29 Station Avenue

Caterham CR3 6LB

Tel: 01883 597000 - caterhamlettings@hamptons-int.com

www.hamptons.co.uk

Floorplan



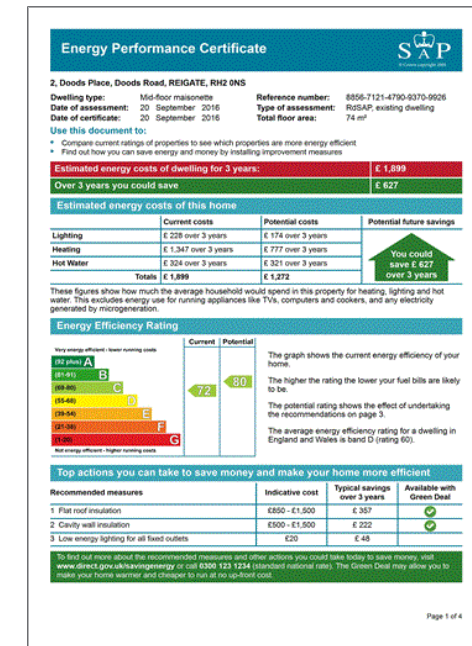
Doods Place, Doods Road, Reigate, RH2

APPROX. GROSS INTERNAL FLOOR AREA 816 SQ FT 75.8 SQ METRES

Whilst every attempt has been made to ensure the accuracy of the floor plan contained here, measurements of doors, windows and rooms are approximate and no responsibility is taken for any error, omission or misstatement. These plans are for representation purposes only as defined by RICS Code of Measuring Practice and should be used as such by any prospective purchaser. Specifically no guarantee is given on the total square footage of the property if quoted on this plan. Any figure given is for initial guidance only and should not be relied on as a basis of valuation.

Copyright nichecom.co.uk 2016 Produced for Hamptons Country Lettings REF : 135244

Energy Performance Certificate (EPC)



For clarification, we wish to inform prospective purchasers that we have prepared these sales particulars as a general guide. We have not verified permissions, nor carried out a survey, tested the services, appliances and specific fittings. Room sizes are approximate and rounded: they are taken between internal wall surfaces and therefore include cupboards/shelves, etc. Accordingly, they should not be relied upon for carpets and furnishings. It should also be noted that all fixtures and fittings, carpeted, curtains/blinds, kitchen equipment and garden statuary, whether fitted or not, are deemed removable by the vendor unless specifically itemised with these particulars.

Hamptons Caterham Lettings

29 Station Avenue

Caterham CR3 6LB

Tel: 01883 597000 - caterhamlettings@hamptons-int.com

www.hamptons.co.uk

HAMPTONS
INTERNATIONAL

Beyond your expectations