

FLOORPLAN © 2015 0845 6344080 Ref: 147810

FLOORPLANZ © 2015 0845 6344080 Ref: 147810

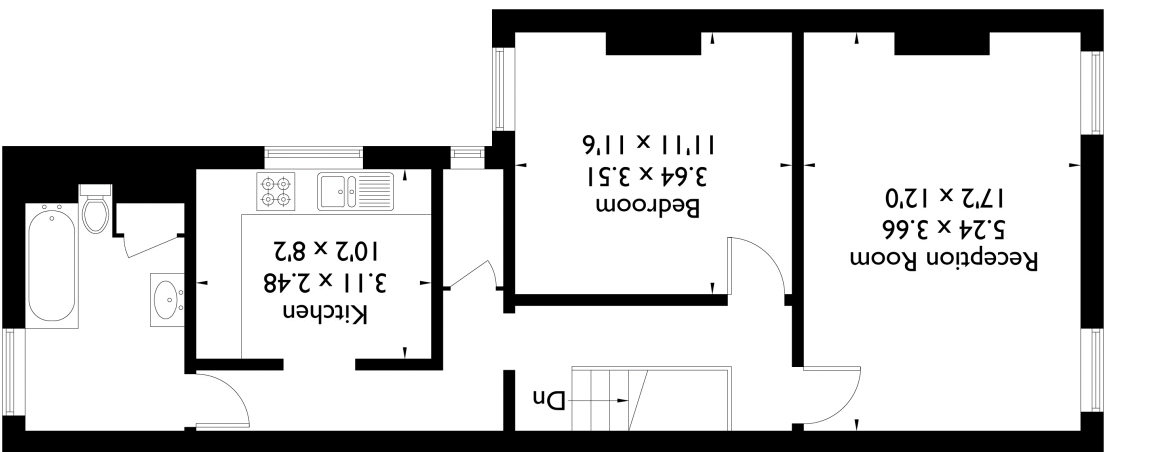
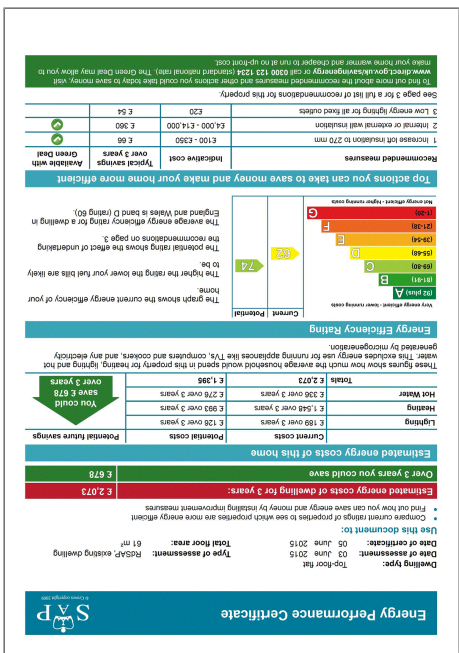
First Floor

Ground Floor

Soames Street, SE15

Flourplan

Energy Performance Certificate (EPC)



Soames Street London SE15

£1,350 Per Month - Available 15/01/2018



Soames Street 147810 ph01



Soames Street 147810 ph03



Soames Street 147810 ph05



Soames Street 147810 ph06



Soames Street 147810 ph07straight



Soames Street 147810 ph08

www.hamptons.co.uk

Soames Street London SE15

£1,350 Per Month - Available 15/01/2018

HAMPTONS
INTERNATIONAL

A light and bright one bedroom first floor period conversion to rent close to the local amenities of East Dulwich

Conversion flat | First floor | Separate fitted kitchen | East Dulwich.

Description

A spacious one bedroom first floor conversion to rent on this quiet residential street. The property comprises of a light and bright reception room, one bedroom, separate fitted kitchen with fridge freezer, gas hob and washer/dryer and a spacious bathroom with shower over bath.

Situation

The nearest station is East Dulwich which provides routes to London Bridge. Lordship Lane is close by with it's array of bars, cafés, shops and pubs

Furnishing

Furnished



Soames Street 147810 ph11straight



Soames Street 147810 ph02

Hamptons Dulwich Lettings

12 Red Post Hill, Dulwich

London SE21 7BX

Tel: 0207 346 5800 - dulwichlettings@hamptons-int.com

www.hamptons.co.uk