



Elmdale Road Tyndalls Park BS8

£1,550 Per Month - Available Now

HAMPTONS
INTERNATIONAL

Beyond your expectations

Elmdale Road Tyndalls Park BS8

£1,550 Per Month - Available Now

HAMPTONS
INTERNATIONAL

Clifton Location | Two Bedrooms | One Single/Study

Clifton Three Bedroom Apartment | Unfurnished | Beautifully decorated throughout.

Description

This first floor apartment is offered on an unfurnished basis benefiting from two double bedrooms. The property is located on Elmdale Road, and whilst Whiteladies Road and the Triangle are both in easy reach, it retains a serene and quiet feel. The apartment comprises of 3 bedrooms, 2 doubles and 1 single, served by a master bathroom with double head shower, hand basin and W/C; a spacious living area which attracts the lovely evening sun through the lead light windows, featured throughout - There is a step down to the kitchen, which includes built in fridge-freezer, washer dryer and gas hob. The apartment is on the first floor, and benefits from a secure intercom entry system. The property would ideally suit a professional couple or two professional sharers. Strictly No Pets.

Furnishing

Unfurnished



Hamptons Bath Lettings

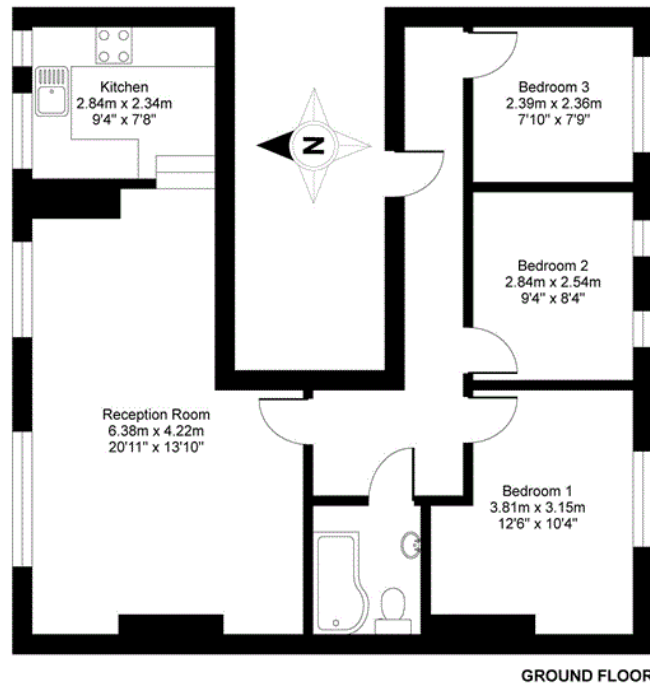
33 Gay Street

Bath BA1 2NT

Tel: 01225 445 646 - bathlettings@hamptons-int.com

www.hamptons.co.uk

Floorplan



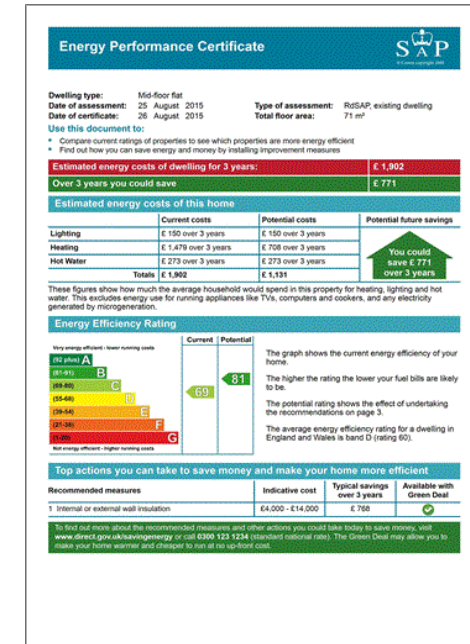
Elmdale Road, Tyndalls Park, Bristol, BS8

APPROX. GROSS INTERNAL FLOOR AREA 764 SQ FT 70.9 SQ METRES

Whilst every attempt has been made to ensure the accuracy of the floor plan contained here, measurements of doors, windows and rooms are approximate and no responsibility is taken for any error, omission or misstatement. These plans are for representation purposes only as defined by RICS Code of Measuring Practice and should be used as such by any prospective purchaser. Specifically no guarantee is given on the total square footage of the property if quoted on this plan. Any figure given is for initial guidance only and should not be relied on as a basis of valuation.

Copyright nichecom.co.uk 2015 Produced for Hamptons Country Lettings REF : 40259

Energy Performance Certificate (EPC)



For clarification, we wish to inform prospective purchasers that we have prepared these sales particulars as a general guide. We have not verified permissions, nor carried out a survey, tested the services, appliances and specific fittings. Room sizes are approximate and rounded: they are taken between internal wall surfaces and therefore include cupboards/shelves, etc. Accordingly, they should not be relied upon for carpets and furnishings. It should also be noted that all fixtures and fittings, carpeted, curtains/blinds, kitchen equipment and garden statuary, whether fitted or not, are deemed removable by the vendor unless specifically itemised with these particulars.

Hamptons Bath Lettings

33 Gay Street

Bath BA1 2NT

Tel: 01225 445 646 - bathlettings@hamptons-int.com

www.hamptons.co.uk

HAMPTONS
INTERNATIONAL

Beyond your expectations