



Premium

Circus Mews Bath BA1

£2,100 Per Month - Available Now



Beyond your expectations

3/4 bedroom Terrace house with off street private parking.

Private Parking -conditions apply | 2 Bathrooms | Long term let available | Renovated throughout | Ample living accommodation | Central location.

Description

Delightful 3/4 bedroom Mews house located in Carriage Court a centrally located exclusive mews development. This extremely well proportioned accommodation is based over two floors offering a contemporary feel throughout with the living accommodation based on the first floor and bedrooms on the ground floor. The property has a linked lounge dining area with a handy mezzanine level which offers similar floor space as the lounge this area is best suited for storage or the occasional guest. The new fitted kitchen/breakfast room offers white goods with the exception of a washing machine and has a view of the courtyard with french doors leaving onto a private balcony. The communal court yard provides parking for the development including a total of four mews properties. The property has

been renovated throughout and benefits from an en suite shower room, family bathroom and guest toilet. This property offers ample living accommodation throughout, good storage facilities and private parking and all within 150 metres from The Circus. Swift viewing highly recommended to save disappointment. Long term let available.

Furnishing

Unfurnished



img_4628



136195 (8)

Hamptons Bath Lettings

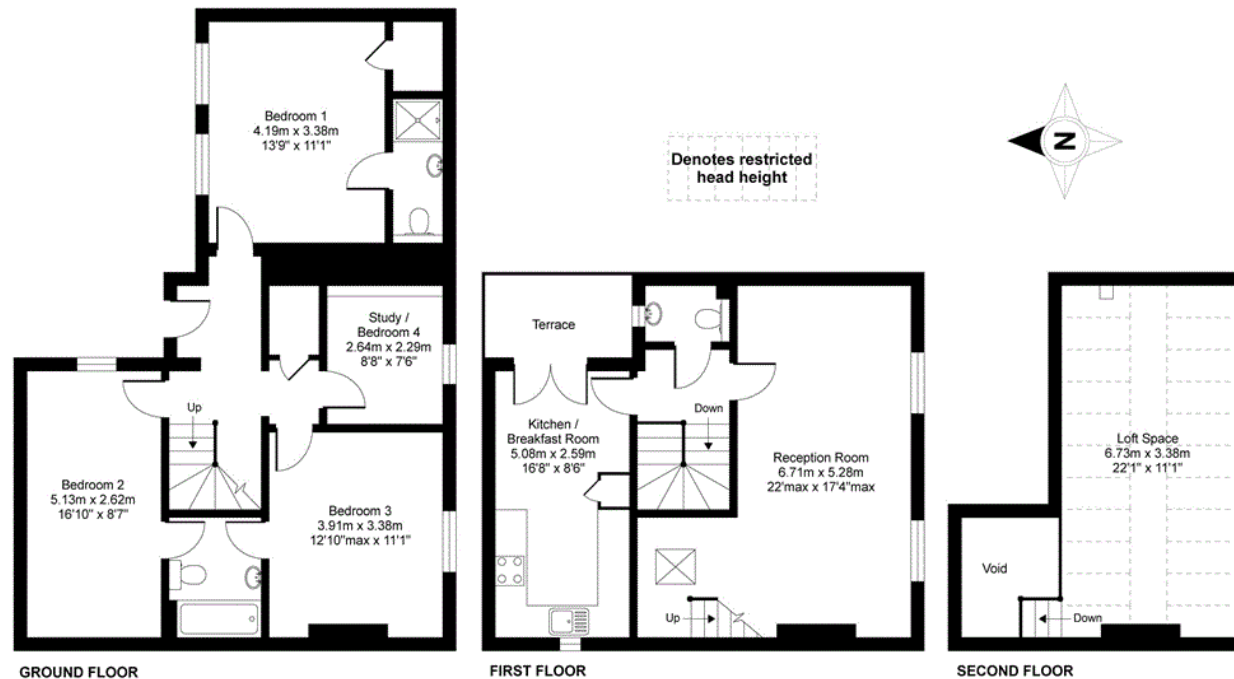
33 Gay Street

Bath BA1 2NT

Tel: 01225 445 646 - bathlettings@hamptons-int.com

www.hamptons.co.uk

Floorplan



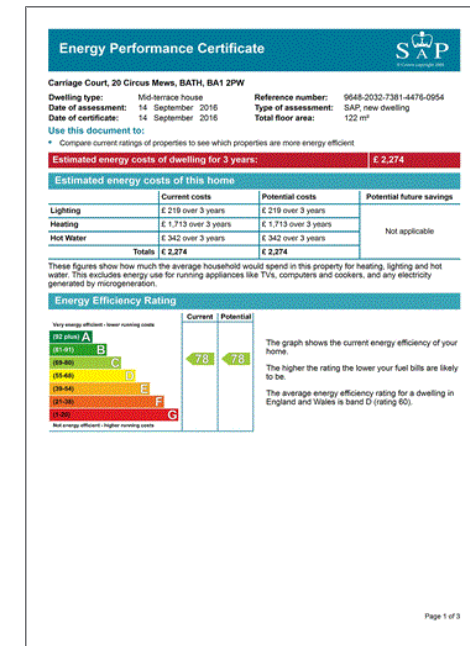
Carriage Court, Circus Mews, Bath, BA1

APPROX. GROSS INTERNAL FLOOR AREA 1341 SQ FT 124.5 SQ METRES (EXCLUDES RESTRICTED HEAD HEIGHT & VOID)

Whilst every attempt has been made to ensure the accuracy of the floor plan contained here, measurements of doors, windows and rooms are approximate and no responsibility is taken for any error, omission or misstatement. These plans are for representation purposes only as defined by RICS Code of Measuring Practice and should be used as such by any prospective purchaser. Specifically no guarantee is given on the total square footage of the property if quoted on this plan. Any figure given is for initial guidance only and should not be relied on as a basis of valuation.

Copyright nichecom.co.uk 2016 Produced for Hamptons Country Lettings REF : 136195

Energy Performance Certificate (EPC)



For clarification, we wish to inform prospective purchasers that we have prepared these sales particulars as a general guide. We have not verified permissions, nor carried out a survey, tested the services, appliances and specific fittings. Room sizes are approximate and rounded: they are taken between internal wall surfaces and therefore include cupboards/shelves, etc. Accordingly, they should not be relied upon for carpets and furnishings. It should also be noted that all fixtures and fittings, carpeted, curtains/blinds, kitchen equipment and garden statuary, whether fitted or not, are deemed removable by the vendor unless specifically itemised with these particulars.

Hamptons Bath Lettings

33 Gay Street

Bath BA1 2NT

Tel: 01225 445 646 - bathlettings@hamptons-int.com

www.hamptons.co.uk

HAMPTONS
INTERNATIONAL

Beyond your expectations