

APPROX. GROSS INTERNAL FLOOR AREA 1076 SQ FT 99.9 SQ METRES (EXCLUDES RESTRICTED HEAD HEIGHT)

GROUND FLOOR

Up

Down

Sitting Room
5.79m x 4.11m
19' x 13.6'

Kitchen
4.14m x 2.21m
13.7' x 7.3'

FIRST FLOOR

Up

Down

Bedroom 3
3.20m x 3.00m
9.10' x 9.10'

Bedroom 2
3.20m x 3.20m
10.6' x 10.6'

SECOND FLOOR

Up

Down

Bedroom 1
3.99m x 3.96m
13.1' x 13'

Bathroom

THIRD FLOOR

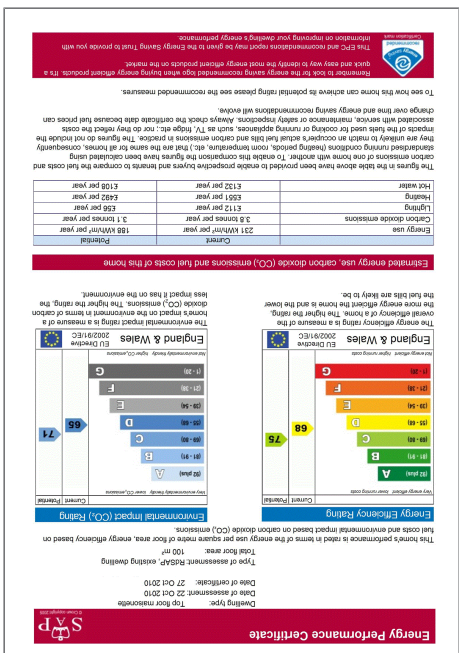
Up

Down

Denotes restricted head height

N

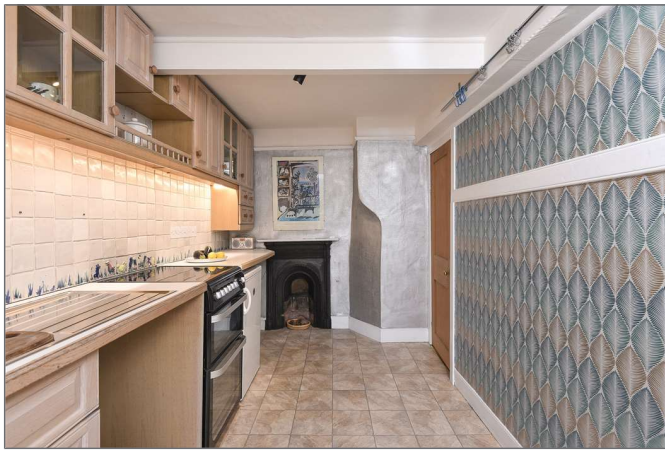
Energy Performance Certificate (EPC)



£1,395 Per Month - Available 22/01/2018



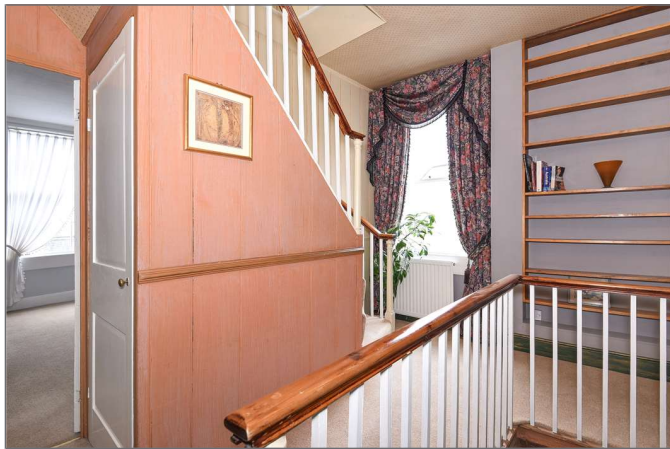
231951 (13)



231951 (14)



231951 (19)



231951 (6)



231951 (12)



231951 (1)

www.hamptons.co.uk

Belvedere Bath BA1

£1,395 Per Month - Available 22/01/2018

HAMPTONS
INTERNATIONAL

Hamptons is delighted to offer you an extremely convenient, beautifully charming three bedroom maisonette bursting with character throughout.

Three floors | Private entrance | Stunning city & country views | Conveniently located | Period features | Permit Parking.

Description

Hamptons is delighted to offer you an extremely convenient, beautifully quirky three bedroom maisonette bursting with period features. The accommodation is arranged over three floors; comprising Lounge complete with gas fire. Kitchen/Breakfast room offering chimney top views. Leading onto the next floor you will find a quality bathroom with separate shower cubicle, the master bedroom is also located on this floor & provides stunning countryside views. The top floor provides 2 further bedrooms with fantastic views & helpful eves storage. The landing areas offer space for reading/ study area. Full character & Georgian charm the maisonette benefits from private access located towards the rear of the building. Belvedere is situated on the lower slopes of Lansdown, within close proximity

of the city centre as well as must visit shopping areas such as Walcot aka the Bohemian heart of Bath where you'll find an abundance of fantastic shops and well known quality super market. James Square & St Margaret's Buildings is a pleasant place to meet for coffee where again you will find a mix of luxury cafes, local traders, interesting boutiques as well a practical pharmacy, doctors surgery and dental practice. Parking is on street & requires a permit.



231951 (11)



231951 (7)

Hamptons Bath Lettings

33 Gay Street
Bath BA1 2NT
Tel: 01225 445 646 - bathlettings@hamptons-int.com
www.hamptons.co.uk