



Brock Street Bath BA1

£1,895 Per Month - Available 05/03/2018



*Stunning courtyard Maisonette within the central location of Brock Street*

Walled Communal Garden | Private courtyard | Private access | Flexible accommodation | Central location.

## Description

The apartment offers its own private entrance and flexible accommodation split over the ground and lower ground levels; offering two bedrooms, an additional occasional guest bedroom or cinema room, family kitchen /diner, study/utility area plus a substantial drawing room. The front & rear courtyards provide a light and airy atmosphere. There is also a communal walled rear garden accessed via the rear court yard.

## Situation

Brock Street is one of Bath's prime residential locations with its fascinating history and stunning architecture you will be able to gain the full Bath experience whilst residing at this property.

## Furnishing

Unfurnished



33 Brock St fpz197684 (1)



33 Brock St fpz197684 (2)

## Hamptons Bath Lettings

33 Gay Street

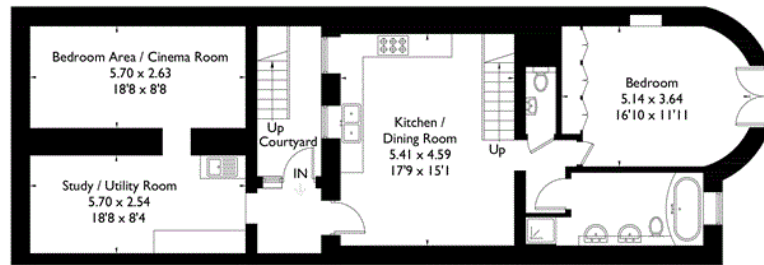
Bath BA1 2NT

Tel: 01225 445 646 - [bathlettings@hamptons-int.com](mailto:bathlettings@hamptons-int.com)

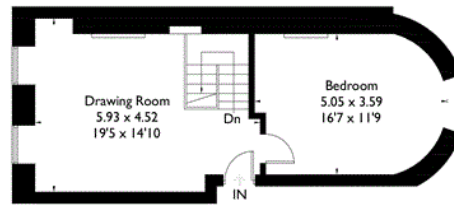
[www.hamptons.co.uk](http://www.hamptons.co.uk)

Brock Street, Bath

Approximate Gross Internal Area = 139.8 sq m / 1505 sq ft  
(Excluding Courtyard)



Lower Ground Floor



Ground Floor

Currently not available

FLOORPLANZ © 2017 0203 9056099 Ref: 197684

This plan is for layout guidance only. Drawn in accordance with RICS guidelines. Not drawn to scale unless stated. Windows & door openings are approximate. Whilst every care is taken in the preparation of this plan, please check all dimensions, shapes & compass bearings before making any decisions reliant upon them.

**For clarification,** we wish to inform prospective purchasers that we have prepared these sales particulars as a general guide. We have not verified permissions, nor carried out a survey, tested the services, appliances and specific fittings. Room sizes are approximate and rounded: they are taken between internal wall surfaces and therefore include cupboards/shelves, etc. Accordingly, they should not be relied upon for carpets and furnishings. It should also be noted that all fixtures and fittings, carpeted, curtains/blinds, kitchen equipment and garden statuary, whether fitted or not, are deemed removable by the vendor unless specifically itemised with these particulars.

Hamptons Bath Lettings

33 Gay Street

Bath BA1 2NT

Tel: 01225 445 646 - bathlettings@hamptons-int.com

[www.hamptons.co.uk](http://www.hamptons.co.uk)

