



Durham Road London N2

£700 Per Week - Available 28/02/2018

HAMPTONS
INTERNATIONAL

Beyond your expectations

Short Let- Available 28th February. A bright and well presented two bedroom garden flat to let. Situated close to both East Finchley tube and Muswell Hill amenities.

Private garden | Reception room | Fully fitted kitchen | Two bedrooms | Family bathroom | Close to local tube | Offered furnished.

Description

Short Let- Available 28th February. A bright and well presented two bedroom ground floor garden flat to let. Ideally situated close to East Finchley tube and within easy access of both East Finchley and Muswell Hill's local amenities. The property benefits from a bright reception leading onto a private garden, separate fitted kitchen, two bedrooms and a family bathroom. Features include neutral décor, high ceilings and wood floors. Offered part furnished.

Furnishing

Furnished



Garden



Garden

Hamptons Muswell Hill Lettings

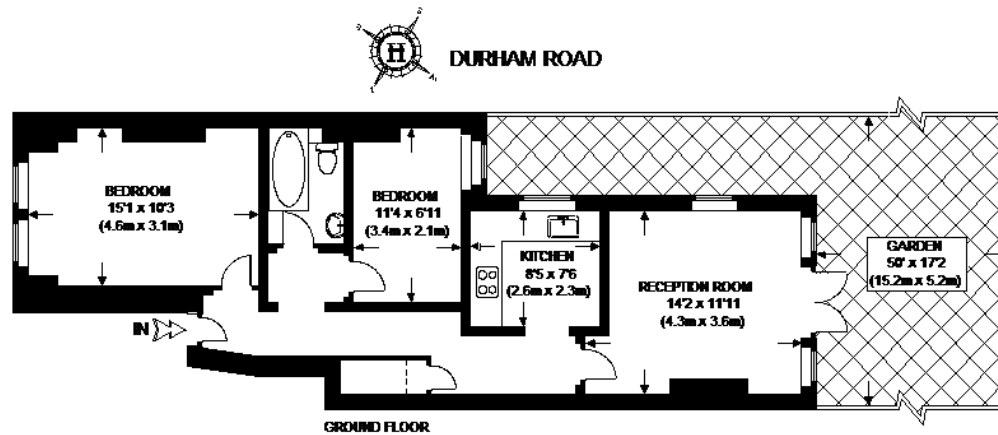
256 Muswell Hill Broadway

London N10 3SH

Tel: 0208 815 5976 - muswellhilllettings@hamptons-int.com

www.hamptons.co.uk

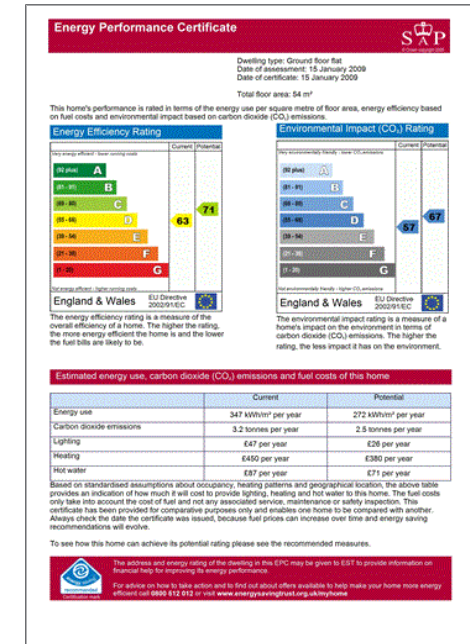
Floorplan



APPROXIMATE GROSS INTERNAL AREA = 657 SQ.FT. (61 SQ. M.)

This plan is for layout guidance only. Not drawn to scale unless stated. Windows & door openings are approximate. Whilst every care is taken in the preparation of this plan, please check all dimensions, shapes & compass bearings before making any decisions reliant upon it. Please be advised that Hamptons International / our agents have not seen or reviewed any building regulations or planning permission in relation to works carried out to the property.

Energy Performance Certificate (EPC)



For clarification, we wish to inform prospective purchasers that we have prepared these sales particulars as a general guide. We have not verified permissions, nor carried out a survey, tested the services, appliances and specific fittings. Room sizes are approximate and rounded: they are taken between internal wall surfaces and therefore include cupboards/shelves, etc. Accordingly, they should not be relied upon for carpets and furnishings. It should also be noted that all fixtures and fittings, carpeted, curtains/blinds, kitchen equipment and garden statuary, whether fitted or not, are deemed removable by the vendor unless specifically itemised with these particulars.

Hamptons Muswell Hill Lettings

256 Muswell Hill Broadway

London N10 3SH

Tel: 0208 815 5976 - muswellhilllettings@hamptons-int.com

www.hamptons.co.uk

HAMPTONS
INTERNATIONAL

Beyond your expectations