



Creighton Avenue London N10

£1,750 Per Month - Available Now

**HAMPTONS**  
INTERNATIONAL

*Beyond your expectations*

# Creighton Avenue London N10

£1,750 Per Month - Available Now

**HAMPTONS**  
INTERNATIONAL

*Exciting new development consisting of four stunning new apartments. This delightful first floor three bedroom apartment offers excellent living space.*

First floor flat | 3 bedroom | Newly refurbished | Close to local amenities | Available mid May | Furnished or unfurnished | Family bathroom | Cloakroom.

## Description

Exciting new development consisting of four stunning new apartments. This delightful first floor three bedroom apartment offers excellent living space. The accommodation includes open plan kitchen living room, family bathroom, cloakroom, two double bedrooms & one single bedroom all with fitted wardrobes.

## Situation

Creighton Avenue is only a stroll away from the fabulous shops and restaurants on Muswell Hill Broadway and in very close proximity to the popular schools of Fortismere Secondary and Our Lady of Muswell Primary. Bus links to Bounds Green (Piccadilly Line) and Highgate Underground (Northern Line) can be found on Colney Hatch and from the Broadway, providing

access into the City and West End.

## Furnishing

Furnished



Bathroom



Bedroom

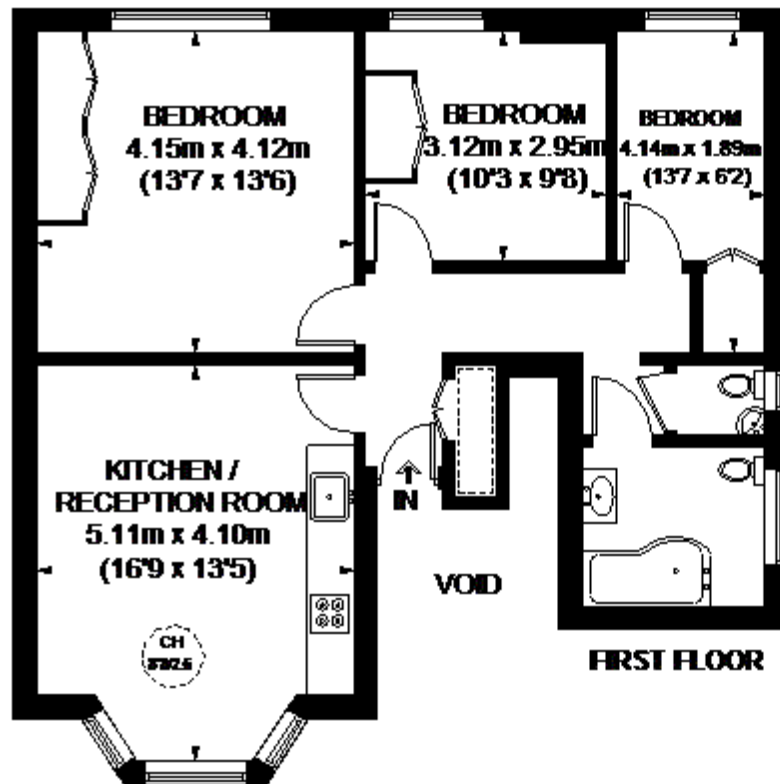
## Hamptons Muswell Hill Lettings

256 Muswell Hill Broadway

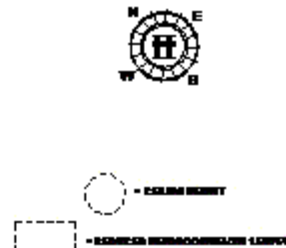
London N10 3SH

Tel: 0208 815 5976 - [muswellhilllettings@hamptons-int.com](mailto:muswellhilllettings@hamptons-int.com)

[www.hamptons.co.uk](http://www.hamptons.co.uk)



## CREIGHTON AVE

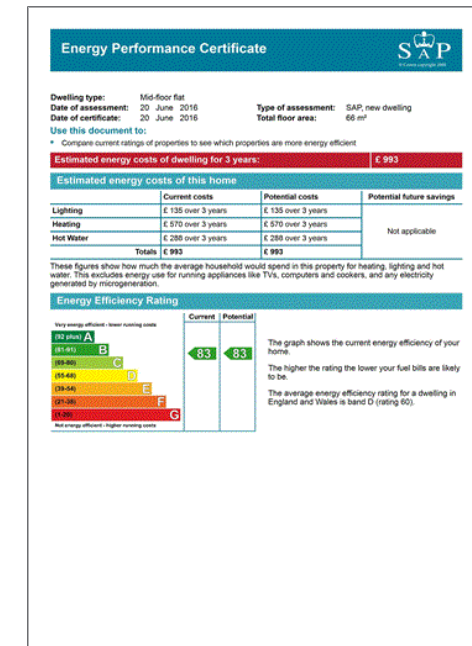


**APPROXIMATE GROSS INTERNAL AREA (EXCLUDING REDUCED HEADROOM)**  
728 SQ. FT. (68.7 SQ. M.)

**REDUCED HEADROOM**  
7 SQ. FT. (0.7 SQ. M.)

**TOTAL - 735 SQ. FT. (69.4 SQ. M.)**

This plan is for layout guidance only. It is shown in scale unless stated. Windows and door openings are approximate. Whilst every care is taken in the preparation of this plan, please check all dimensions, shapes and volumes before making any decisions about your plans. Please be advised that Hampton International's car agents have not seen or measured any building regulations or planning permission in relation to the construction of the property (2018/0700).



**For clarification,** we wish to inform prospective purchasers that we have prepared these sales particulars as a general guide. We have not verified permissions, nor carried out a survey, tested the services, appliances and specific fittings. Room sizes are approximate and rounded: they are taken between internal wall surfaces and therefore include cupboards/shelves, etc. Accordingly, they should not be relied upon for carpets and furnishings. It should also be noted that all fixtures and fittings, carpeted, curtains/blinds, kitchen equipment and garden statuary, whether fitted or not, are deemed removable by the vendor unless specifically itemised with these particulars.

### Hamptons Muswell Hill Lettings

256 Muswell Hill Broadway

London N10 3SH

Tel: 0208 815 5976 - muswellhilllettings@hamptons-int.com

[www.hamptons.co.uk](http://www.hamptons.co.uk)

**HAMPTONS**  
INTERNATIONAL

Beyond your expectations