



Marylebone Road London NW1

£8,000 Per Week - Available Now

**HAMPTONS**  
INTERNATIONAL

*Beyond your expectations*

# Marylebone Road London NW1

£8,000 Per Week - Available Now

**HAMPTONS**  
INTERNATIONAL

*An outstanding four bedroom (4,079 sq ft) duplex penthouse with amazing views across the London skyline. The apartment has been meticulously refurbished throughout with great care and attention to detail, and offers superb entertaining space with wonderful natural light and flexible living.*

## Description

An outstanding four bedroom (4,079 sq ft) duplex penthouse with amazing views across the London skyline. The apartment has been meticulously refurbished throughout with great care and attention to detail, and offers superb entertaining space with wonderful natural light and flexible living.

## Furnishing

Furnished

## Situation

Marathon House is a 24 hour portered modern building conveniently situated for the numerous boutiques and restaurants the Marylebone area has to offer. Easy access to the West End theatres and cultural attractions are easily accessed via Marylebone & Baker Street underground stations, as are the open spaces of Regents Park.



## Hamptons Mayfair Lettings

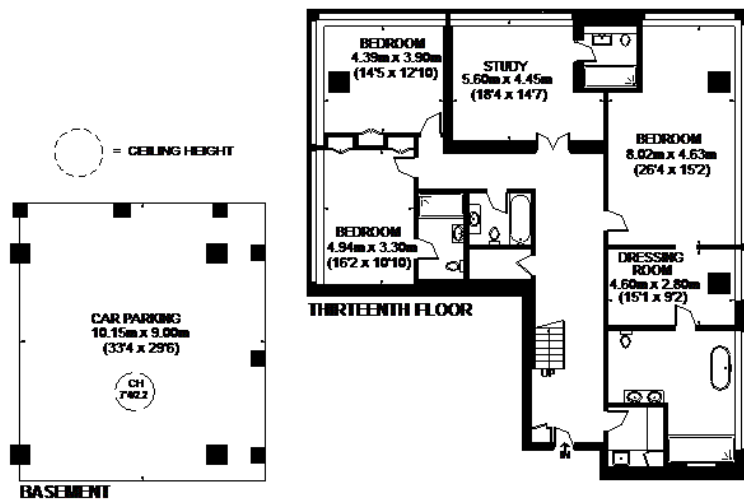
32 Curzon Street, Mayfair

London W1J 7WS

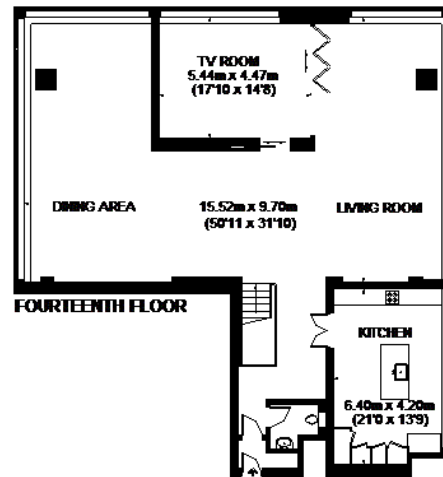
Tel: 020 7758 8450 - [mayfairlettings@hamptons-int.com](mailto:mayfairlettings@hamptons-int.com)

[www.hamptons.co.uk](http://www.hamptons.co.uk)

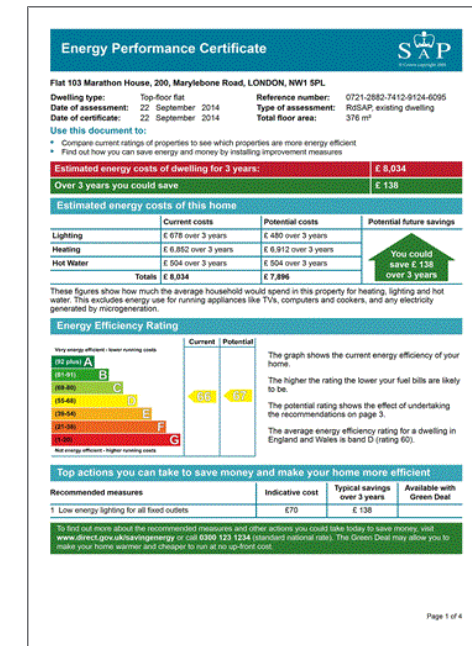
## MARATHON HOUSE



THIS PLAN HAS BEEN DRAWN FROM SUPPLIED PLANS, STRICTLY FOR USE AS A GUIDE ONLY  
APPROXIMATE GROSS INTERNAL AREA  
(EXCLUDING BASEMENT)  
THIRTEENTH FLOOR = 2026 SQ. FT. (188.3 SQ. M.)  
FOURTEENTH FLOOR  
2053 SQ. FT. (190.6 SQ. M.)  
TOTAL = 4079 SQ. FT. (378.9 SQ. M.)



This plan is for layout guidance only. Not drawn to scale unless stated. Windows and door openings are approximate. Whilst every care is taken in the preparation of this plan, please check all dimensions, shapes and compass bearings before making any decisions relied upon them. Please be advised that Hamptons International / our agents have not seen or reviewed any building regulations or planning permission in relation to works carried out to the property (ID254330)



For clarification, we wish to inform prospective purchasers that we have prepared these sales particulars as a general guide. We have not verified permissions, nor carried out a survey, tested the services, appliances and specific fittings. Room sizes are approximate and rounded: they are taken between internal wall surfaces and therefore include cupboards/shelves, etc. Accordingly, they should not be relied upon for carpets and furnishings. It should also be noted that all fixtures and fittings, carpeted, curtains/blinds, kitchen equipment and garden statuary, whether fitted or not, are deemed removable by the vendor unless specifically itemised with these particulars.

## Hamptons Mayfair Lettings

32 Curzon Street, Mayfair

London W1J 7WS

Tel: 020 7758 8450 - [mayfairlettings@hamptons-int.com](mailto:mayfairlettings@hamptons-int.com)[www.hamptons.co.uk](http://www.hamptons.co.uk)

Beyond your expectations