



London Road Kingston Upon Thames KT2

£1,175 Per Month (Unfurnished) - 2019-04-01

150
YEARS

HAMPTONS
INTERNATIONAL

London Road, Kingston Upon Thames, KT2

£1,175 Per Month (Unfurnished)

Apartment, Kitchen, Reception, Bedroom, Bathroom, Parking.



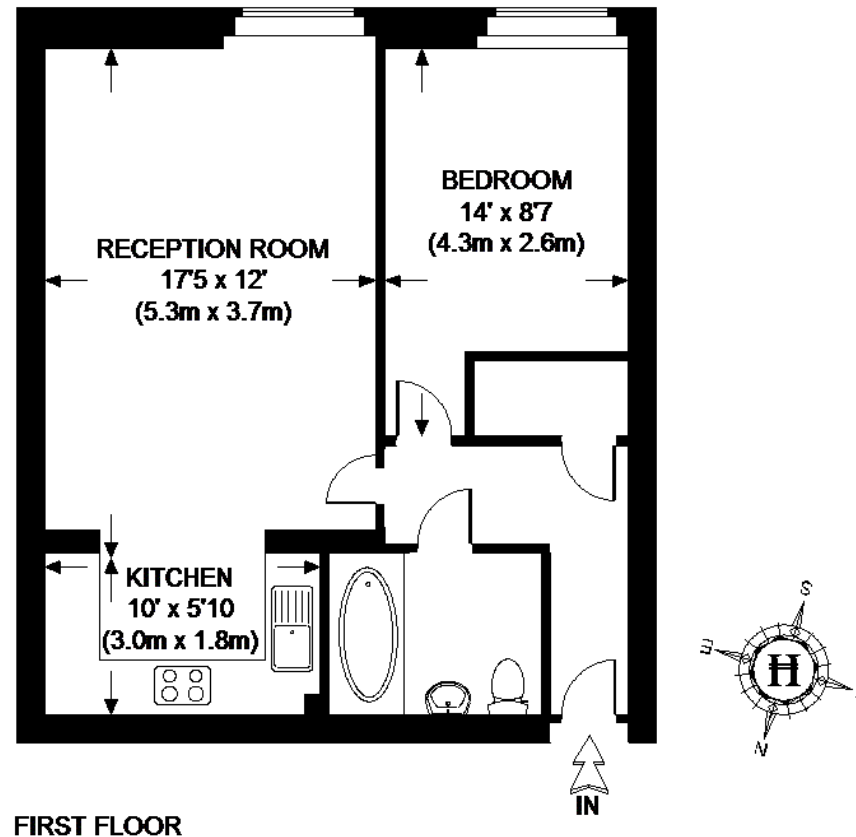
Description

Newly decorated one bedroom apartment situated in a popular development close to Norbiton Mainline Station and Kingston town centre. The property is offered in excellent decorative order and benefits from an open plan kitchen with modern appliances, reception room with wood floors, well proportioned double bedroom and family bathroom. The property further benefits from underground parking.



	Current	Potential		Current	Potential
Very energy efficient - lower running costs			Very environmentally friendly - lower CO ₂ emissions		
(91-100) A			(92-100) A		
(81-91) B			(81-91) B		
(71-81) C			(71-81) C		
(61-71) D			(61-71) D		
(51-61) E			(51-61) E		
(41-51) F			(41-51) F		
(31-41) G			(31-41) G		
Not energy efficient - higher running costs			Not environmentally friendly - higher CO ₂ emissions		
	84	87		79	79
England & Wales	EU Directive 2002/91/EC		England & Wales	EU Directive 2002/91/EC	

BUICK HOUSE , KT2



APPROXIMATE GROSS INTERNAL AREA = 517 SQ.FT. (48 SQ. M.)

This plan is for layout guidance only. Not drawn to scale unless stated. Windows & door openings are approximate. Whilst every care is taken in the preparation of this plan, please check all dimensions, shapes & compass bearings before making any decisions reliant upon it. Please be advised that Hamptons International / our agents have not seen or reviewed any building regulations or planning permission in relation to works carried out to the property.

For clarification, we wish to inform prospective tenants that we have prepared these particulars as a general guide. We have not verified permissions, nor carried out a survey, tested the services, appliances and specific fittings. Room sizes are approximate and rounded: they are taken between internal wall surfaces and therefore include cupboards/shelves, etc. Accordingly, they should not be relied upon for carpets and furnishings. It should also be noted that all fixtures and fittings, carpeted, curtains/blinds, kitchen equipment and garden statuary, whether fitted or not, are deemed removable by the landlord unless specifically itemised with these particulars.

150
YEARS

HAMPTONS
INTERNATIONAL

