



Flecknoe, Warwickshire

£2,300 Per Month - Available Now

HAMPTONS
INTERNATIONAL

Beyond your expectations

Located in the picturesque village of Flecknoe, this farmhouse has been thoroughly modernised and benefits from five bedrooms and outstanding views.

Description

Located in the picturesque village of Flecknoe, this farmhouse has been thoroughly modernised and benefits from five bedrooms and outstanding views. Accommodation comprises of; a great sized breakfast kitchen, large sitting room with log burner, dining room, study, utility room. Master bedroom with en suite and four further double bedrooms, two bathrooms. Garden, double garage and driveway parking. Flecknoe is ideally placed to access Rugby, Daventry, Southam and Northampton and Leamington Spa beyond.

Furnishing

Unfurnished



Flecknoe



Kitchen

Hamptons Stratford-upon-Avon Lettings

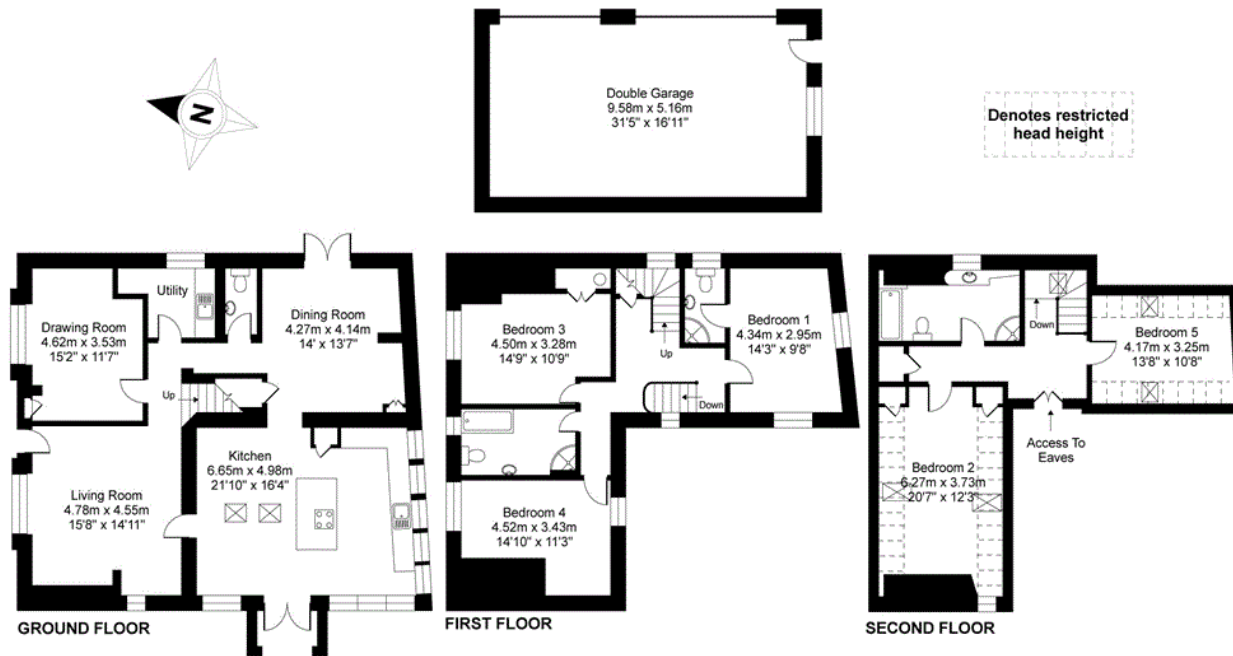
4-5 Union Street, Stratford-upon-Avon

Warwickshire CV37 6QT

Tel: 01789 292 394 - stratforduponavonlettings@hamptons-int.com

www.hamptons.co.uk

Floorplan



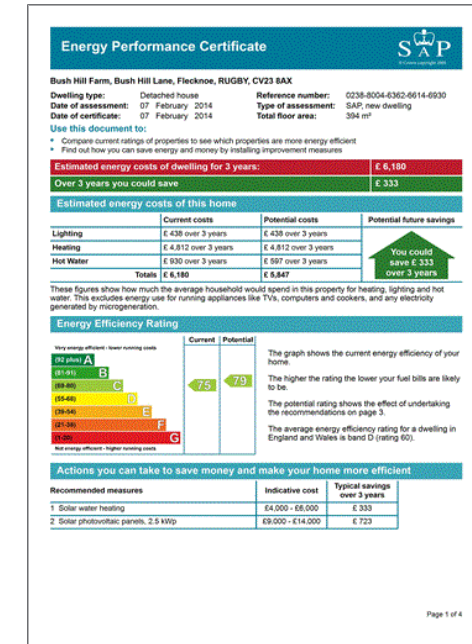
Bush Hill Farmhouse, Bush Hill Lane, Flecknoe, Rugby, CV23

APPROX. GROSS INTERNAL FLOOR AREA 3061 SQ FT 284.3 SQ METRES (EXCLUDES RESTRICTED HEAD HEIGHT & INCLUDES DETACHED GARAGE)

Whilst every attempt has been made to ensure the accuracy of the floor plan contained here, measurements of doors, windows and rooms are approximate and no responsibility is taken for any error, omission or misstatement. These plans are for representation purposes only as defined by RICS Code of Measuring Practice and should be used as such by any prospective purchaser. Specifically no guarantee is given on the total square footage of the property if quoted on this plan. Any figure given is for initial guidance only and should not be relied on as a basis of valuation.

Copyright nichecom.co.uk 2015 Produced for Hamptons Country Lettings REF : 39503

Energy Performance Certificate (EPC)



For clarification, we wish to inform prospective purchasers that we have prepared these sales particulars as a general guide. We have not verified permissions, nor carried out a survey, tested the services, appliances and specific fittings. Room sizes are approximate and rounded: they are taken between internal wall surfaces and therefore include cupboards/shelves, etc. Accordingly, they should not be relied upon for carpets and furnishings. It should also be noted that all fixtures and fittings, carpeted, curtains/blinds, kitchen equipment and garden statuary, whether fitted or not, are deemed removable by the vendor unless specifically itemised with these particulars.

Hamptons Stratford-upon-Avon Lettings

4-5 Union Street, Stratford-upon-Avon

Warwickshire CV37 6QT

Tel: 01789 292 394 - stratforduponavonlettings@hamptons-int.com

www.hamptons.co.uk

HAMPTONS
INTERNATIONAL

Beyond your expectations