



Wendover Road, Bourne End SL8

£1,450 Per Month - Available 05/11/2016

HAMPTONS
INTERNATIONAL

Beyond your expectations

Wendover Road, Bourne End SL8

£1,450 Per Month - Available 05/11/2016

HAMPTONS
INTERNATIONAL

Three bedroom house with two reception rooms, garage and garden located in Bourne End. Available October. EPC:D (charges apply).

3 Bedrooms | 1 Bathroom | Gas Central Heating | Dishwasher | Fridge/Freezer | Washer | Garden | Garage | Off Street Parking.

Description

Three bedroom house within walking distance of Bourne End Village and station. Accommodation comprises: Open plan living/dining, separate kitchen and WC . First floor: bathroom, two double bedrooms and one single. Outside: enclosed lovely garden (gardener included), garage and driveway parking. Available October. Unfurnished.

Situation

Bourne End is a thriving Thameside village and provides a variety of independent shops (including a family-owned greengrocer and butcher) as well as some high-street names. There is a fantastic selection of well-renowned restaurants and pubs both in the village itself and nearby, and there are beautiful countryside walks

to be enjoyed in the area. Bourne End also has a marina with the recently opened Riverlight restaurant. The popular Bounty pub is located on the opposite side of the river and can be accessed via footbridge or boat!

Furnishing

Unfurnished



Sitting room



Kitchen

Hamptons Marlow Lettings

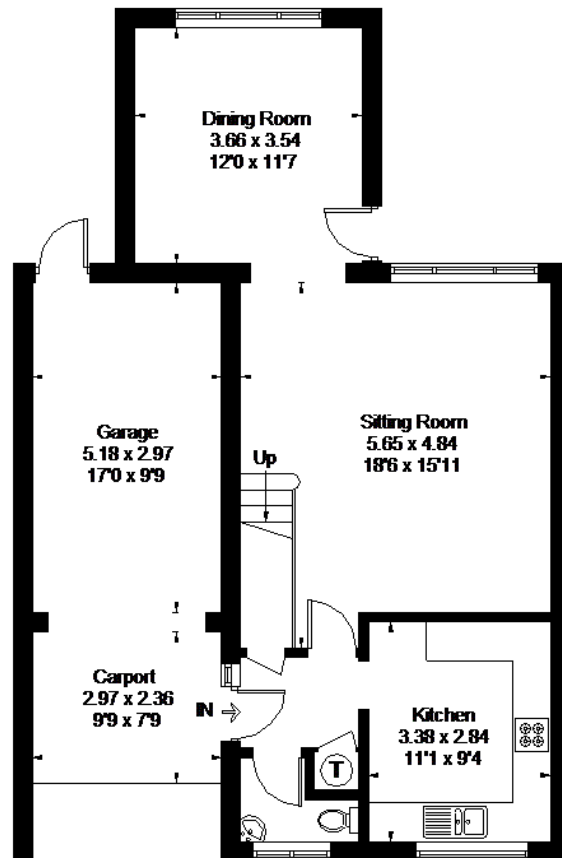
43 High Street

Marlow SL7 1BA

Tel: 01628482598 - marlowlettings@hamptons-int.com

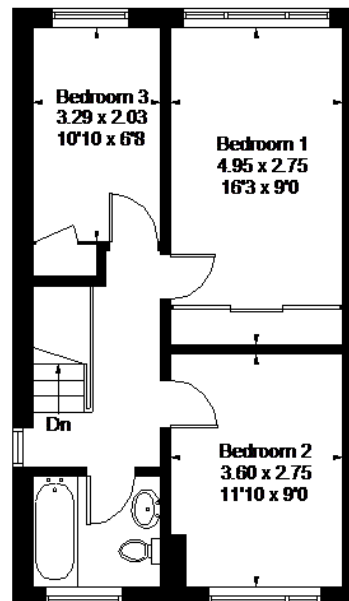
www.hamptons.co.uk

Floorplan



Ground Floor

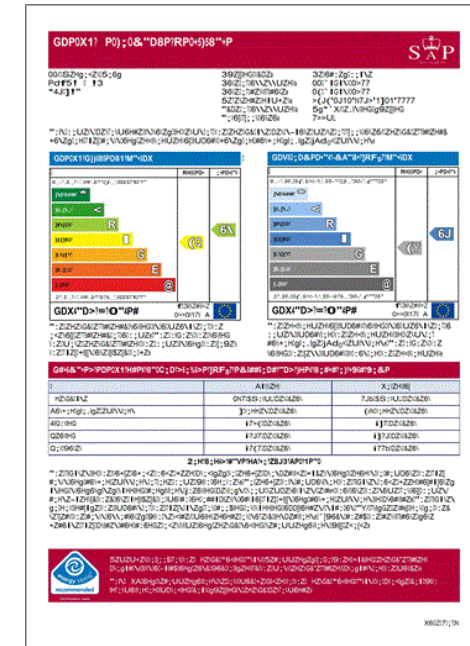
Wendover Road, Bourne End
 Approximate Gross Internal Area = 97.4 sq m / 1048 sq ft
 Garage = 15.0 sq m / 162 sq ft
 Total = 112.4 sq m / 1210 sq ft
 (Excluding Carport)



First Floor

Floorplanz © 2016
0845 6344080 Ref: 17

This plan is for layout guidance only.
Drawn in accordance with
RICS guidelines. Not drawn to
scale, unless stated. Windows &
door openings are approximate.
Whilst every care is taken in the
preparation of this plan, please check
all dimensions, shapes & compass
bearings before making any
decisions reliant upon them.



For clarification, we wish to inform prospective purchasers that we have prepared these sales particulars as a general guide. We have not verified permissions, nor carried out a survey, tested the services, appliances and specific fittings. Room sizes are approximate and rounded: they are taken between internal wall surfaces and therefore include cupboards/shelves, etc. Accordingly, they should not be relied upon for carpets and furnishings. It should also be noted that all fixtures and fittings, carpeted, curtains/blinds, kitchen equipment and garden statuary, whether fitted or not, are deemed removable by the vendor unless specifically itemised with these particulars.

Hamptons Marlow Lettings

43 High Street

Marlow SL7 1BA

Tel: 01628482598 - marlowlettings@hamptons-int.com

www.hamptons.co.uk