

Waterside



Quarry Wood Marlow SL7

£1,650 Per Month - Available 05/02/2018

HAMPTONS
INTERNATIONAL

Beyond your expectations

A superb two bedroom riverside apartment in an Edwardian Folly on the outskirts of Marlow. Available December.

Description

A stunning two bedroom riverside apartment located just a short distance from Marlow town centre in an exclusive Edwardian Folly with breath taking river views, communal gardens and off street parking. This spacious property is approx 1276sq ft and includes an eat-in kitchen, drawing room, separate sun room, two double bedrooms and a newly fitted bathroom. Available December. Unfurnished.

Situation

The property is located within a short distance of the riverside town of Marlow offering an excellent variety of shops including individual boutiques, restaurants and leisure facilities. The railway station links to London Paddington with mainline connection to London Marylebone via

the Chiltern Line at High Wycombe, easily accessible via the A404 Marlow Bypass to J4 of the M40 which is approximately five miles distant. The A404 also gives easy access to the M4 at J8/9.

Furnishing

Unfurnished



Hamptons Marlow Lettings

43 High Street

Marlow SL7 1BA

Tel: 01628482598 - marlowlettings@hamptons-int.com

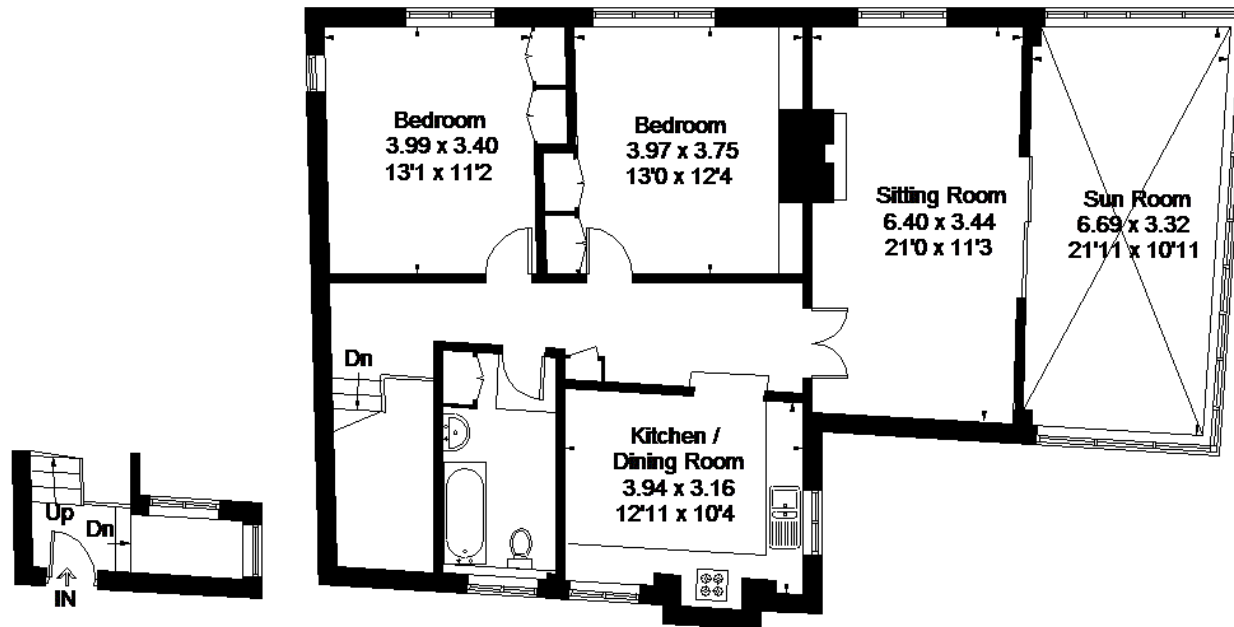
www.hamptons.co.uk

Floorplan

Energy Performance Certificate (EPC)

Quarry Wood, Marlow

Approximate Gross Internal Area
117.3 sq m / 1263 sq ft



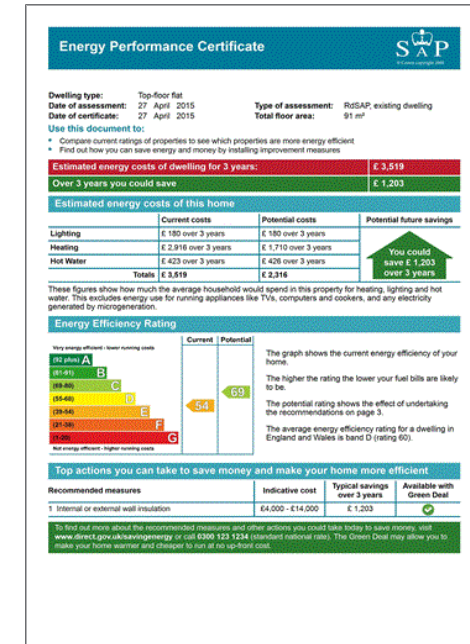
Ground Floor

First Floor

FLOORPLANZ © 2015 0845 6344080 Ref: 144742

This plan is for layout guidance only. Drawn in accordance with RICS guidelines. Not drawn to scale unless stated. Windows & door openings are approximate. Whilst every care is taken in the preparation of this plan, please check all dimensions, shapes & compass bearings before making any decisions reliant upon them.

For clarification, we wish to inform prospective purchasers that we have prepared these sales particulars as a general guide. We have not verified permissions, nor carried out a survey, tested the services, appliances and specific fittings. Room sizes are approximate and rounded: they are taken between internal wall surfaces and therefore include cupboards/shelves, etc. Accordingly, they should not be relied upon for carpets and furnishings. It should also be noted that all fixtures and fittings, carpeted, curtains/blinds, kitchen equipment and garden statuary, whether fitted or not, are deemed removable by the vendor unless specifically itemised with these particulars.



Hamptons Marlow Lettings

43 High Street

Marlow SL7 1BA

Tel: 01628482598 - marlowlettings@hamptons-int.com

www.hamptons.co.uk

HAMPTONS
INTERNATIONAL

Beyond your expectations