



Wethered Park Marlow SL7

£2,500 Per Month - Available Now

HAMPTONS
INTERNATIONAL

Beyond your expectations

Wethered Park Marlow SL7

£2,500 Per Month - Available Now

HAMPTONS
INTERNATIONAL

An elegant, 3 bedroom, 3 bathroom town house located in one of Marlow's most prestigious gated developments. Available now. Unfurnished.

Description

A superb near new town house in a gracious established 'Georgian style circle of properties built curving round a central seven acres of gardens and fine specimen trees. This exclusive property provides the following accommodation: Entrance hallway, fitted kitchen, cloakroom, sunny oak floored sitting room with dining area and French doors opening onto its own small private walled courtyard garden. First floor: Two double bedrooms and bathrooms. The bright and airy rear bedroom has French windows with a Juliet balcony overlooking the mature park like grounds around which the houses are built. The master bedroom with its spacious bathroom, occupies the entire top floor and has far reaching views. Underfloor heating on the ground and first floor with shutters fitted throughout. There is

dedicated parking outside for the property plus visitor parking. Convenient walking access into the centre of town and to the river is via secure pedestrian gates. Wethered Parks inner private road and grounds are CCTV monitored 24/7. Available now. Unfurnished.



65 Wethered Park 165010 (9)



Hamptons Marlow Lettings

43 High Street

Marlow SL7 1BA

Tel: 01628482598 - marlowlettings@hamptons-int.com


www.hamptons.co.uk

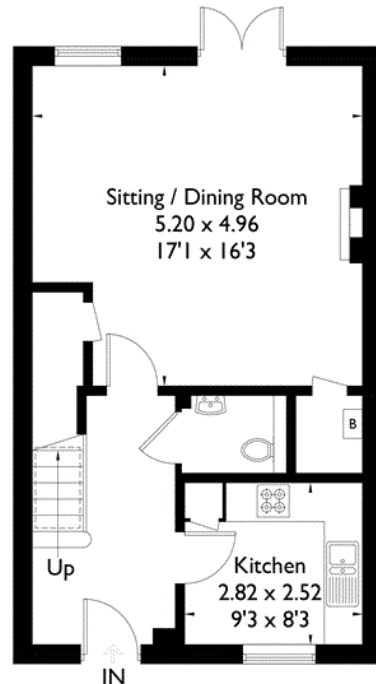
Floorplan

Wethered Park, Marlow

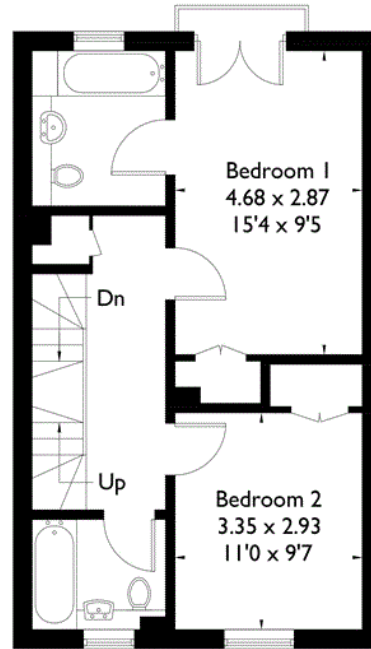
Approximate Gross Internal Area = 131.6 sq m / 1416 sq ft



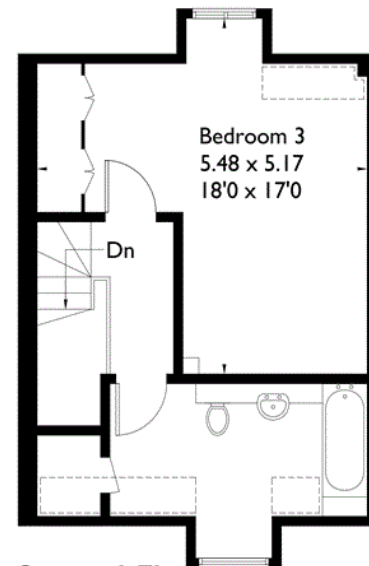
 = Reduced headroom below 1.5m / 5'0"



Ground Floor



First Floor

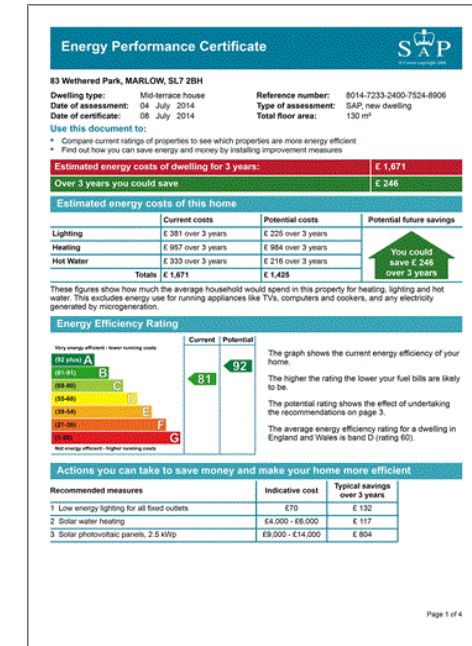


Second Floor

FLOORPLANZ © 2016 0845 6344080 Ref: 168883

This plan is for layout guidance only. Drawn in accordance with RICS guidelines. Not drawn to scale unless stated. Windows and door openings are approximate. Whilst every care is taken in the preparation of this plan, please check all dimensions, shapes & compass bearings before making any decisions reliant upon them.

Energy Performance Certificate (EPC)



For clarification, we wish to inform prospective purchasers that we have prepared these sales particulars as a general guide. We have not verified permissions, nor carried out a survey, tested the services, appliances and specific fittings. Room sizes are approximate and rounded: they are taken between internal wall surfaces and therefore include cupboards/shelves, etc. Accordingly, they should not be relied upon for carpets and furnishings. It should also be noted that all fixtures and fittings, carpeted, curtains/blinds, kitchen equipment and garden statuary, whether fitted or not, are deemed removable by the vendor unless specifically itemised with these particulars.

Hamptons Marlow Lettings

43 High Street

Marlow SL7 1BA

Tel: 01628482598 - marlowlettings@hamptons-int.com

www.hamptons.co.uk

HAMPTONS
INTERNATIONAL

Beyond your expectations