



Cricklade Avenue London SW2

£2,995 Per Month - Available Now

**HAMPTONS**  
INTERNATIONAL

*Beyond your expectations*

*A refurbished five bedroom house available in Streatham Hill on a residential street only moments from Streatham Hill Station offering a regular service in London Victoria.*

*Fantastic property with new flooring throughout, freshly painted with a new kitchen and bathroom, bright and spacious with a private rear garden. Unfurnished and available now.*

Terrace period house | Excellent condition | Professional sharers or a family | Five bedrooms: three doubles and two large singles | Modern bathroom plus downstairs shower | Separate further w.c. | Two reception rooms (one can be used as a bedroom) | Kitchen with fitted appliances including a dishwasher | Private garden.

### Description

A refurbished five bedroom house available in Streatham Hill on a residential street only moments from Streatham Hill Station offering a regular service in London Victoria. Fantastic property with new flooring throughout, freshly painted with a new kitchen and bathroom, bright and spacious with a private rear garden. Unfurnished and available now.

### Furnishing

Unfurnished



50-Cricklade-Ave-10



50-Cricklade-Ave-9

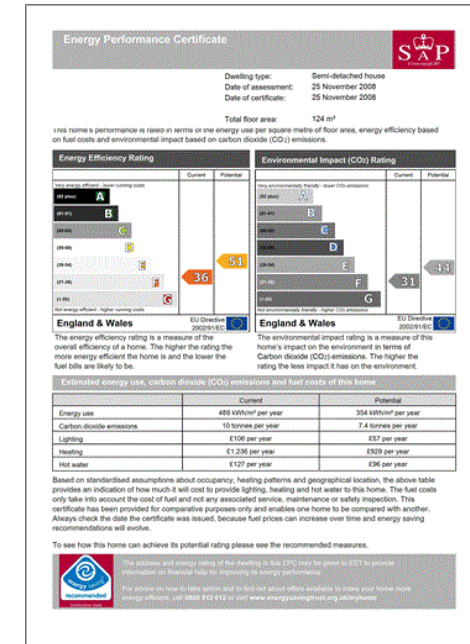
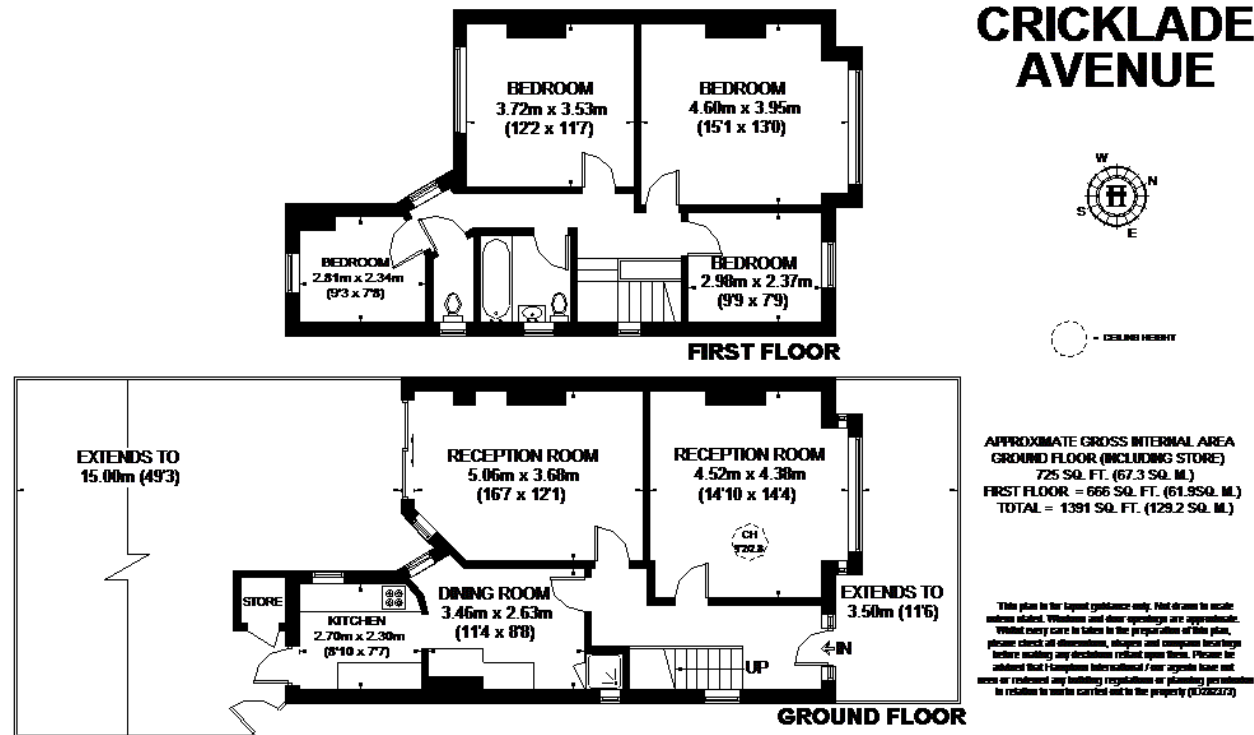
### Hamptons Balham Lettings

11-13 Bedford Hill

London SW12 9ET

Tel: 020 8618 2014 - [Balhamlettings@hamptons-int.com](mailto:Balhamlettings@hamptons-int.com)

[www.hamptons.co.uk](http://www.hamptons.co.uk)



**For clarification,** we wish to inform prospective purchasers that we have prepared these sales particulars as a general guide. We have not verified permissions, nor carried out a survey, tested the services, appliances and specific fittings. Room sizes are approximate and rounded: they are taken between internal wall surfaces and therefore include cupboards/shelves, etc. Accordingly, they should not be relied upon for carpets and furnishings. It should also be noted that all fixtures and fittings, carpeted, curtains/blinds, kitchen equipment and garden statuary, whether fitted or not, are deemed removable by the vendor unless specifically itemised with these particulars.