



Ashurst Close, Northwood
Middlesex, HA6



Beyond your expectations

New build semi-detached house built over three floors. EPC:B.

Hamptons International

114 High St, Rickmansworth, Hertfordshire, WD3 1AQ

Sales. 01923 776291

rickmansworth@hamptons-int.com

www.hamptons.co.uk

NEW BUILDS | 4 BEDROOMS | STUDY | SHOWER ROOM | FAMILY BATHROOM | EN SUITE SHOWER ROOM |
LIVING ROOM | OPEN PLAN KITCHEN & DINING AREA | UTILITY ROOM | WC | GARAGE | PARKING | GARDENS

Guide Price £995,000 Freehold

Description

One of two superb new semi-detached 'townhouse style' houses built over three floors. Each house has a living room and a large kitchen/diner with a separate utility room and cloakroom on the ground floor. On the first floor there are two bedrooms with fitted wardrobes and en-suite to the master, a study and family bathroom. The top floor has two further bedrooms with a separate shower room.

Outside

Outside the properties there are landscaped gardens, patios and a garage with off street parking.

Location

Green Ash Grove is located in the popular, leafy London suburb of Northwood. With Northwood Underground Station only a short walk away, the development is ideally positioned for access to Central London and its broad range of cultural venues, activities and nightlife.

Northwood is also conveniently located for road links with the M25, M1 and M40 motorways all within comfortable driving distance.

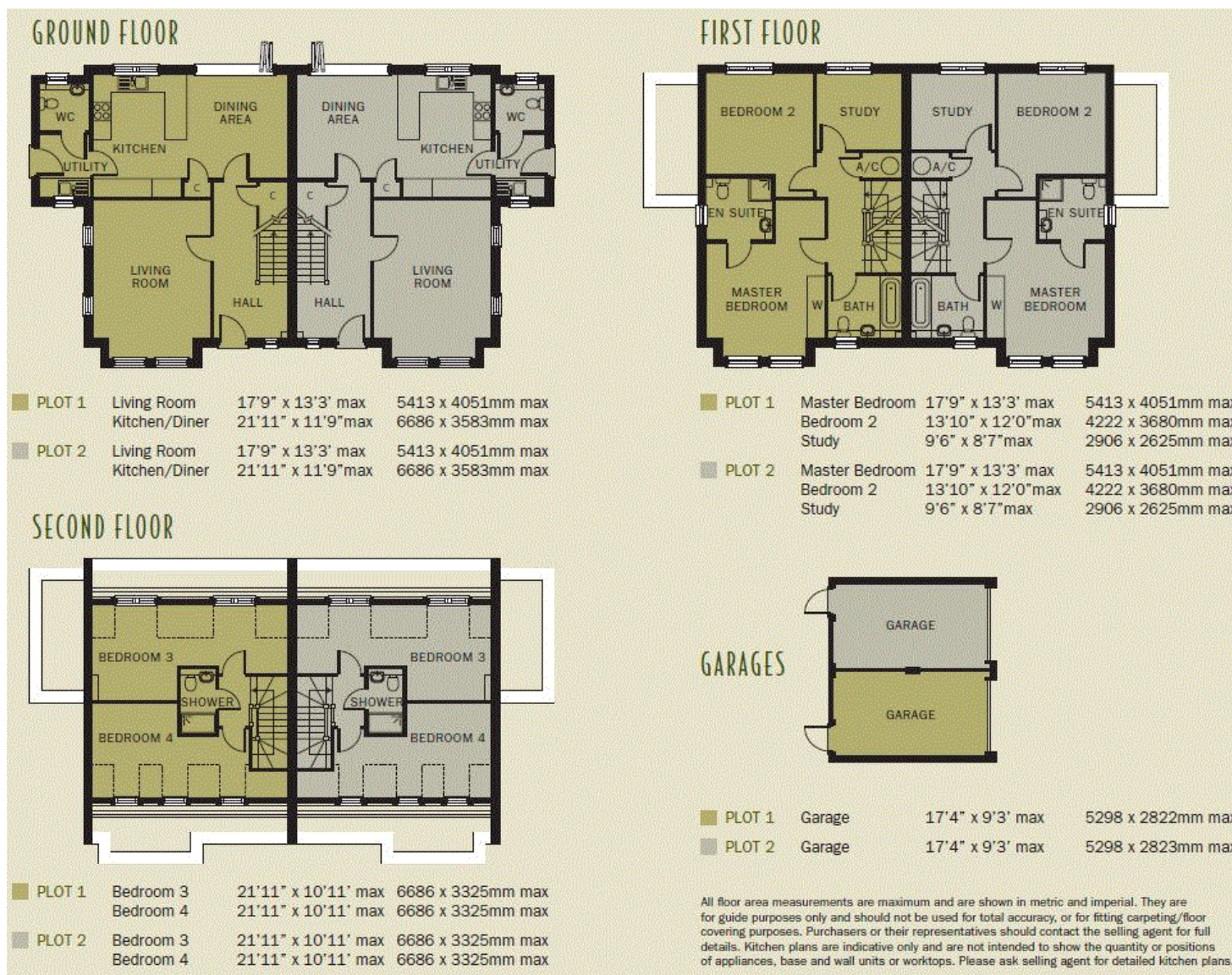
The development is just a short walk from the main Northwood shops and amenities on Green Lane. There are excellent state and independent schools in Northwood, including St Helen's School, Northwood College and St Martins School. There are two golf courses within a mile of the development - Northwood

Golf Club and the Haste Hill public course. Excellent health & leisure clubs are nearby and Ruislip Woods National Nature Reserve and the Ruislip Lido are also close at hand.

Additional Information

Local Authority: Hillingdon Borough Council.





FOR CLARIFICATION We wish to inform prospective purchasers that we have prepared these sales particulars as a general guide. We have not carried out a detailed survey, nor tested the services, appliances and specific fittings. Room sizes are approximate and rounded: they are taken between internal wall surfaces and therefore include cupboards/shelves, etc. Accordingly, they should not be relied upon for carpets and furnishings. Formal notice is also given that all fixtures and fittings, carpeting, curtains/blinds and kitchen equipment, whether fitted or not, are deemed removable by the vendor unless specifically itemised within these particulars.

