



Manor Barns, Hazeley Road

Twyford, Hampshire, SO21



Beyond your expectations

A very attractive high specification mews style, Grade II listed.

Hamptons International

72 High Street, Winchester, Hampshire, SO23 9DA

Sales. 01962 842030

winchester@hamptons-int.com

www.hamptons.co.uk

Master bedroom with built in wardrobes | bedroom 2 | family bathroom | kitchen/dining room | living room
| wc | garden | help to buy available

Guide Price £449,500 Freehold

Description

Gable End Mews forms part of an early 19th century brick and flint building bounding the western side of the site and boasts a great deal of charm. Ideally suited to professionals, downsizers or those seeking a manageable property to 'lock up and leave'. Converted to a high specification by Bourne Homes Ltd an internal inspection is strongly recommended

Outside

Approached via a paved path the garden lies to the front of the cottage and will be easy to manage. This property comes with a covered carport plus additional allocated parking.

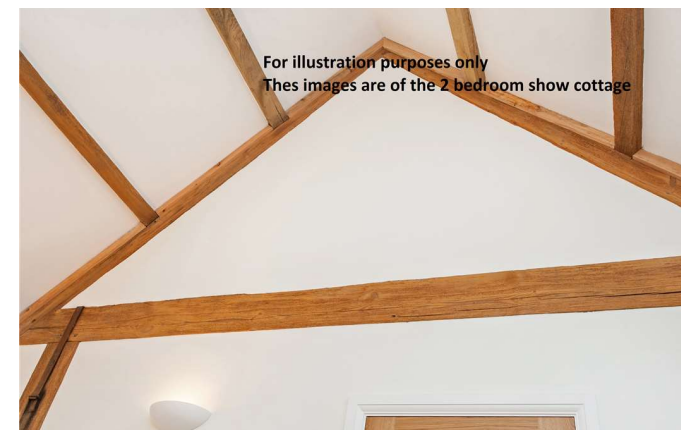
Location

The village is home to the renowned Twyford Preparatory School as well as Twyford state primary school. There is a bus route through the village and train links, including mainline links to London Waterloo (about 1 hour), can be found at nearby Shawford station. More comprehensive facilities can be found at the beautiful cathedral city of Winchester, approximately 3.5 miles away which offers excellent cultural, educational, and leisure facilities including a theatre, cinema and a wide range of shopping amenities.

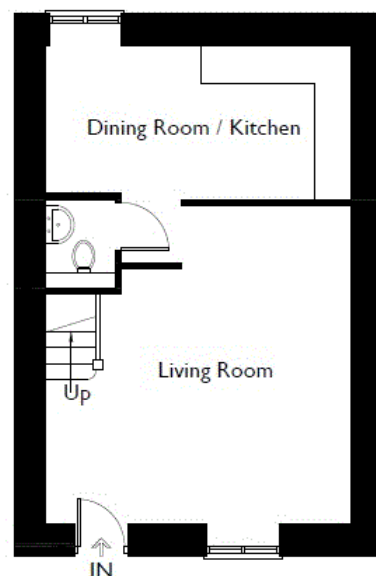
Additional Information

Services - Mains water and electricity, under floor heating to the ground floor, private drainage.

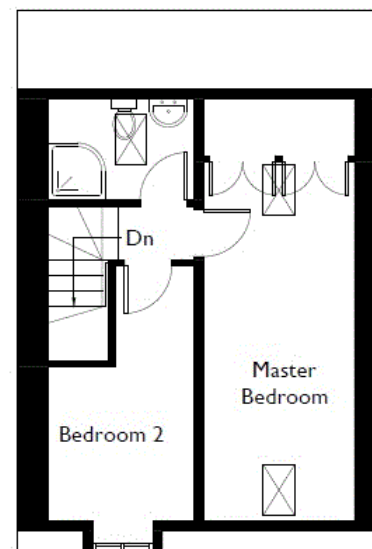
Agents Note: Please note there is a buyers incentive stamp duty contribution - terms apply. Please contact Hamptons International for further information



Gable End Mews, Manor Barns, Hazeley Road, Twyford



Ground Floor



First Floor



Illustration for identification purposes only. Not to scale
Ref: 160786-6

FOR CLARIFICATION We wish to inform prospective purchasers that we have prepared these sales particulars as a general guide. We have not carried out a detailed survey, nor tested the services, appliances and specific fittings. Room sizes are approximate and rounded: they are taken between internal wall surfaces and therefore include cupboards/shelves, etc. Accordingly, they should not be relied upon for carpets and furnishings. Formal notice is also given that all fixtures and fittings, carpeting, curtains/blinds and kitchen equipment, whether fitted or not, are deemed removable by the vendor unless specifically itemised within these particulars.

For illustration purposes only
These images are of the 2 bedroom show cottage



For illustration purposes.
These images are of the 2 bed show cottage



For illustration purposes only
These images are of the 2 bedroom show cottage



these images are of the 2 bedroom show cottage

