



Deep Field, Datchet  
Berkshire, SL3



*Beyond your expectations*



# Detached 5 Bedroom, 3 Bathroom Home

Hamptons International

52 High Street, Windsor, Berkshire, SL4 1LS

Sales. 01753 855555

windsor@hamptons-int.com

[www.hamptons.co.uk](http://www.hamptons.co.uk)

5 Bedrooms | 3 Bathrooms | Kitchen | Utility Room | Sitting Room | Dining Room | Garage | Gardens

Guide Price £895,000 Freehold

### Description

Tucked away in a unique private lane overlooking the village cricket green, a 5 bedroom, 3 bathroom detached property with a double garage, private parking and mature front and rear gardens located less than a 300m walk to the village green with its amenities and railway station.

Extended, remodelled and presented in excellent order throughout, features include a wood burner and bi-folding doors in the sitting room, a walk in wardrobe in the master bedroom suite, oak internal doors and a superb double height skylight in the main shower room.

The ground floor accommodation is versatile with a sitting room, dining room, kitchen with fitted units, separate utility room and four bedrooms, two of which are currently configured as home offices.

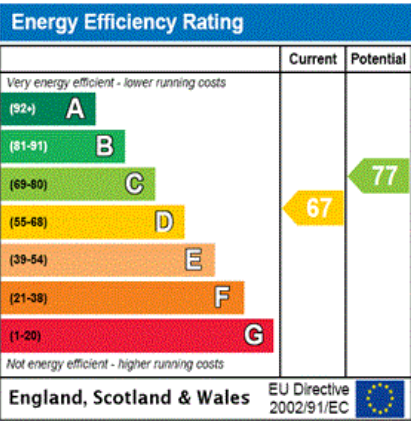
First floor houses a considerable sized bedroom suite at 36 feet which includes an ensuite bathroom, velux windows, eaves storage and a studio area together with a separate storage area with a sink for the studio.

### Outside

Approached via a wooden gate to a gravel turning circle including a central pond, with the remainder of the frontage landscaped with mature plants and shrubbery, parking is provided for numerous cars.

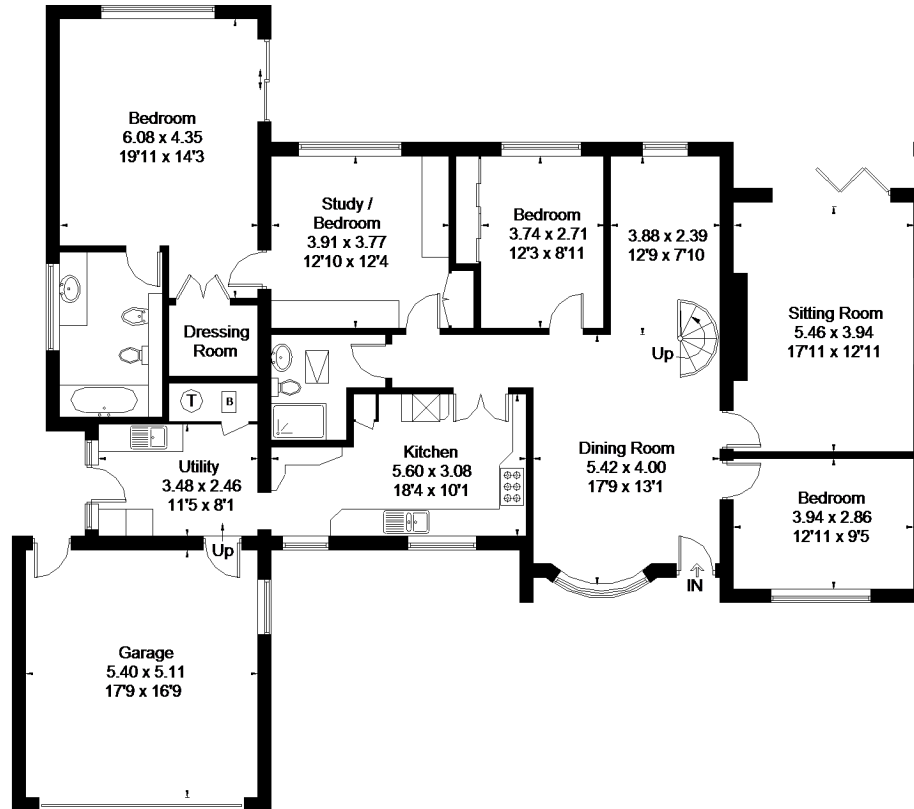
A mature garden sits at the rear, beautifully and neatly

landscaped to include fruit trees, a vegetable patch, lawn, shrubbery and a paved terrace ideal for summer dining, all bordered by panel fencing and rear brick wall.

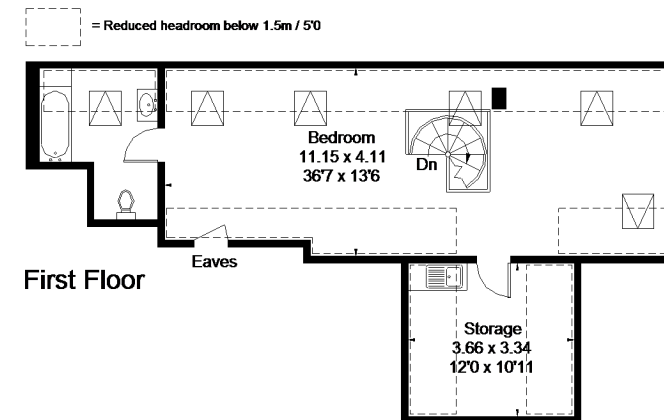


# Deep Field, Datchet

Approximate Gross Internal Area  
263.5 sq m / 2836 sq ft (Including Garage & Storage)



Ground Floor



First Floor

Floorplanz © 2016  
0845 6344080 Ref: 160609

This plan is for layout guidance only.  
Drawn in accordance with  
RICS guidelines. Not drawn to  
scale, unless stated. Windows &  
door openings are approximate.  
Whilst every care is taken in the  
preparation of this plan, please check  
all dimensions, shapes & compass  
bearings before making any  
decisions reliant upon them.

**FOR CLARIFICATION** We wish to inform prospective purchasers that we have prepared these sales particulars as a general guide. We have not carried out a detailed survey, nor tested the services, appliances and specific fittings. Room sizes are approximate and rounded: they are taken between internal wall surfaces and therefore include cupboards/shelves, etc. Accordingly, they should not be relied upon for carpets and furnishings. Formal notice is also given that all fixtures and fittings, carpeting, curtains/blinds and kitchen equipment, whether fitted or not, are deemed removable by the vendor unless specifically itemised within these particulars.



