



**Gallery Apartments, 6 Lamb Walk**  
London, SE1



*Beyond your expectations*

# Two Bed, Two Bath, 4th Floor Flat. EPC: B

**Hamptons International**  
41 Shad Thames, Tower Bridge, London, SE1 2NJ  
Sales. 020 7407 3173  
towerbridge@hamptons-int.com

[www.hamptons.co.uk](http://www.hamptons.co.uk)

Two Bedrooms | Two Bathrooms | New Homes Guarantee | Large Balconies | Views | Wooden Floors | Lift | Open Plan Reception

## Asking Price £865,000 Leasehold

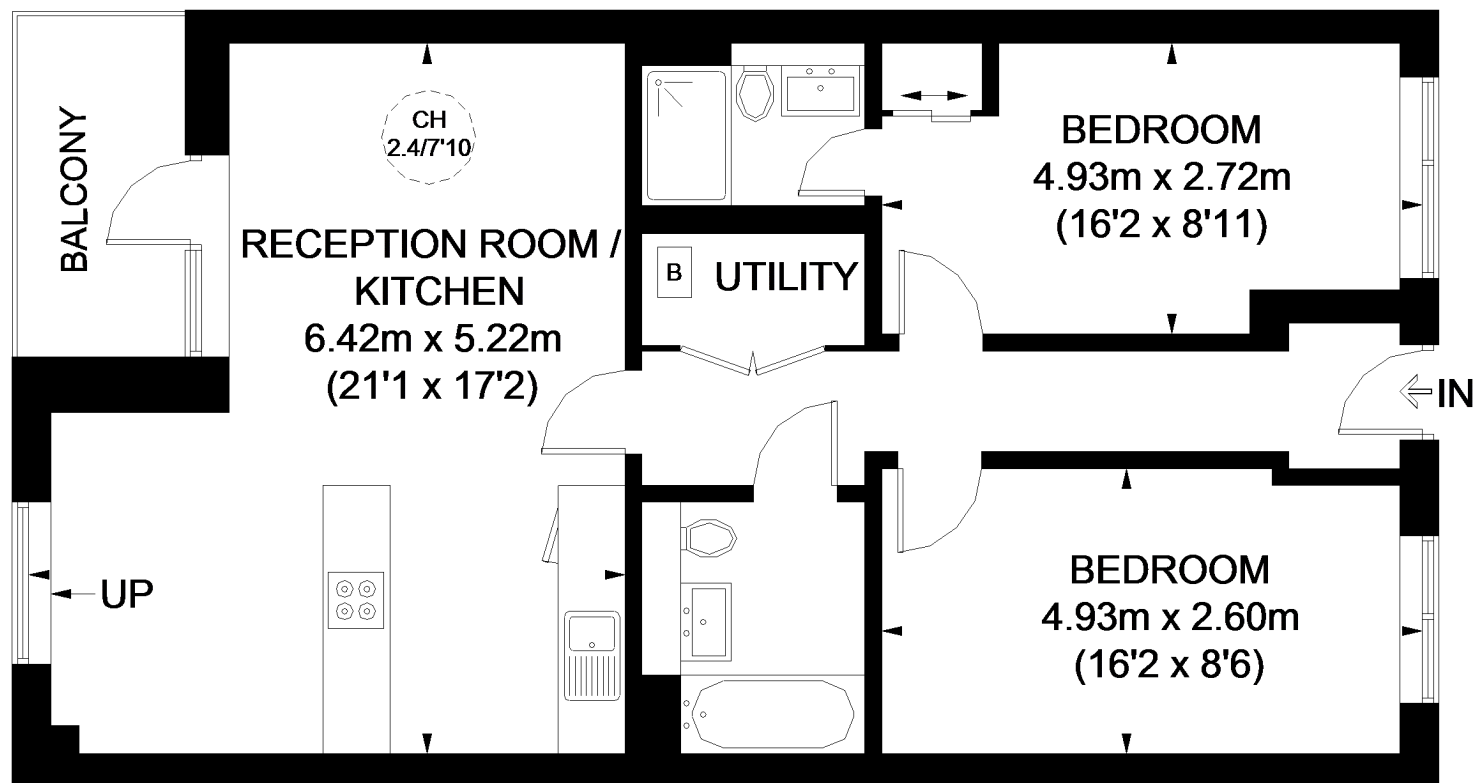
### Location

Bermondsey Street, known for the old Antiques Market, is now a vibrant area with an eclectic mix of boutiques, gastro pubs, bars and restaurants. A park and tennis courts provide further amenities and are well used by the local residents. The City is accessible by walking over either London Bridge or Tower Bridge, with other transport links via London Bridge main line train station and underground (Jubilee and Northern lines), which is within walking distance, as is the River Taxi at Hay's Galleria.



Energy Efficiency Rating		
	Current	Potential
Very energy efficient - lower running costs		
(92+) A		
(81-91) B	84	84
(69-80) C		
(55-68) D		
(39-54) E		
(21-38) F		
(1-20) G		
Not energy efficient - higher running costs		
England, Scotland & Wales	EU Directive 2002/91/EC	

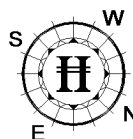
# GALLERY APARTMENTS



## THIRD FLOOR



APPROXIMATE GROSS INTERNAL AREA  
787 SQ. FT. (73.1 SQ. M.)



This plan is for layout guidance only. Not drawn to scale unless stated. Windows and door openings are approximate. Whilst every care is taken in the preparation of this plan, please check all dimensions, shapes and compass bearings before making any decisions reliant upon them. Please be advised that Hamptons International / our agents have not seen or reviewed any building regulations or planning permission in relation to works carried out to the property (ID259349)

**FOR CLARIFICATION** We wish to inform prospective purchasers that we have prepared these sales particulars as a general guide. We have not carried out a detailed survey, nor tested the services, appliances and specific fittings. Room sizes are approximate and rounded: they are taken between internal wall surfaces and therefore include cupboards/shelves, etc. Accordingly, they should not be relied upon for carpets and furnishings. Formal notice is also given that all fixtures and fittings, carpeting, curtains/blinds and kitchen equipment, whether fitted or not, are deemed removable by the vendor unless specifically itemised within these particulars.



